

Learn More, Earn More

No matter what your age, learning and continuing to develop your skills and knowledge is something that can help you keep a job, progress in your current job or get a better job!

As an adult learner, there may be some challenges you face when studying - time, financial constraints, childcare issues, employer support or even nervousness. So, we've made sure that we provide the flexibility and support you need to help you achieve your goals. It's never too late to learn!

Continuing Professional Development is important for many reasons:

-  **New skills**
-  **Employment opportunities**
-  **Mental health & happiness**
-  **Social connections & interpersonal skills**
-  **Confidence & self esteem**
-  **Inspires others**

Many Course Options

Whether you want to learn something new, upskill, return to education, or train for a new career, we're here to help. Courses are available across all levels from introductory to degree level, and courses can be as short as one week through to full professional qualifications and higher education programmes that might take months or years to complete. Study can be part-time - just an hour or two a week, or full-time. You can also choose from courses on campus, in the community or online.

You can choose from lots of courses at Southern Regional College that welcome adults aged 19+ including:

- Part-time and full-time vocational (career-focused) study
- Online courses
- Courses in the community

- Access to Higher Education courses
- University level study right through to degree
- Postgraduate study

Supporting Your Learning

We value and support each of our learners, no matter whether you're on a short evening course or working towards a qualification. We have an award-winning Student Services team who are ready to help and support you back into education.

Careers Advice & Guidance

As part of our commitment to every learner, SRC offer a high quality, impartial, relevant and confidential Careers Education, Information, Advice and Guidance Service. Our team of careers advisors will work with you, to understand your learning and career goals and to support you in reaching your potential.

We offer free careers and learning advice to all our learners, regardless of your starting point. We can support you in finding a job, progress at work or to take the next steps in your learning journey.

Learning Support

Our Learning Support team can work with you to help ensure you have everything you need to succeed. Learning Support is additional support to assist students who might otherwise be unable to access a programme of study or who, by reason of their learning difficulty or disability, may require individual support.

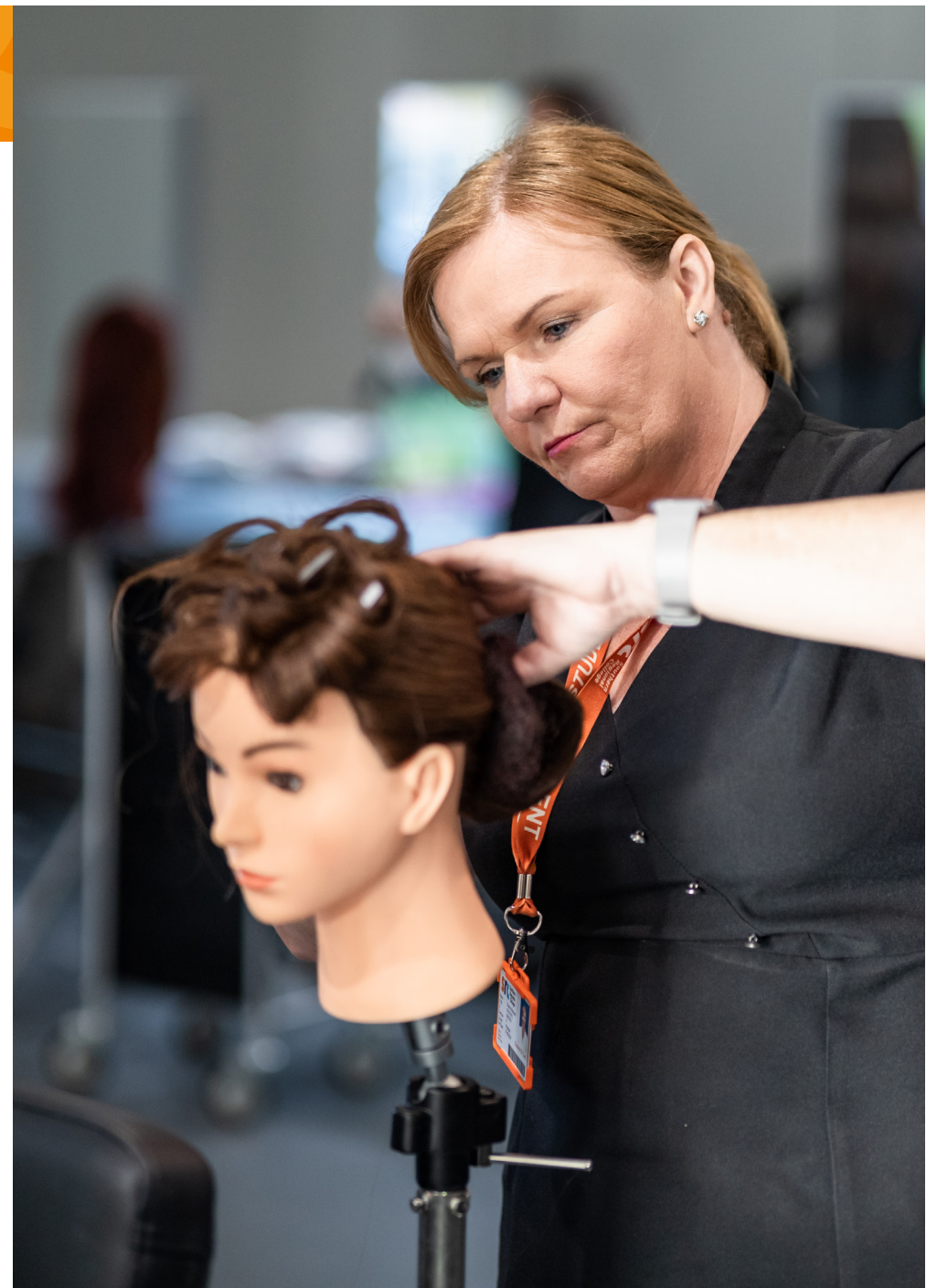
We may be able to help with pre-entry guidance, classroom support, examination support or assistive technologies. Please let us know about any additional support you may need as soon as possible to help us ensure you get it on time. More advice on the support we offer can be found on our website.

Fees, Finance & Funding

If you choose to study part-time at level 3 or below, you may be entitled to reduced fees if you are in receipt of certain benefits. You may also be eligible to apply for a Further Education Grant or to the SRC Hardship Fund.

For those learners who are interested in studying a higher education qualification (level 4 and above), there are many finance options available including Higher Education Awards, Tuition Fee Loans, Maintenance Grants and Loans, Hardship Fund and Disabled Students' Allowance. Our higher education tuition fees are also extremely competitive compared with the same university course.

Our student finance team can provide guidance and assistance to adult learners in applying for the right financial support.



Look Up. Move Up. Skill Up.

Some of our courses are supported by the Department for the Economy's Flexible Skills Programme. Skill Up Courses* are completely free, and opportunities are available from entry level to postgraduate level! Many of these courses will be delivered online and will provide an opportunity to re-skill and upskill into areas where job growth is expected to be high.

eCampus - Flexible Learning Courses

We understand that life and work commitments may mean it is difficult for you to travel to one of our campuses to study. As you browse through our courses you will see that many are offered through eCampus. The course may be delivered using a blended approach, which means it will be taught partly online and partly on campus. But many courses offered through eCampus are fully online, which makes it easier for those with other commitments to get qualified.

Skilled Staff

Our lecturers are dedicated and passionate about their subjects. Our smaller class sizes allow you to develop your skills, knowledge, and confidence in an environment where both lecturers and learners offer support and encouragement. Our lecturing staff are also commercially trained, and many have worked in industry for years before joining the College. So, you can be confident you are being taught by highly trained professionals.

Apply Today

Coming back to college can be a daunting but nevertheless an exciting prospect. We welcome many adult learners every year and have a great adult learning community for you to join. So, awaken your mind and seize the opportunity. A world of endless opportunities awaits!

**eligibility criteria applies*



SRC - Best in the UK!

Southern Regional College topped the leaderboard at the WorldSkills UK competition 2022, with SRC students securing 3 gold medals, 4 silver medals, 6 bronze medals and 4 students being awarded highly commended, in categories from Furniture & Cabinet Making, Health & Social Care, Wall & Floor Tiling, Automation, Beauty Therapy, Creative Media Makeup, Mechatronics, Painting & Decorating to Laboratory Technician.

The results were announced at a livestreamed WorldSkills UK Watch Party at the College's Armagh campus, which saw competitors and their families join SRC staff to watch the winners announced live by Steph McGovern from Channel 4's 'Steph's Packed Lunch'.

WorldSkills UK, often dubbed the 'Skills Olympics', offers a chance for students from across the UK to compete in a bid to be

crowned winner of their chosen subject area. Having made it through the NI competitions, SRC students put on a fantastic display of their abilities in a range of subject areas at the National Finals which took place at various UK locations.

Brian Doran, Principal and Chief Executive at Southern Regional College spoke of his delight at the results:

"I am filled with enormous pride that the SRC team have topped the leaderboard at WorldSkills UK. At Southern Regional College we place great emphasis on training, supporting and mentoring our students to compete at regional, national and international level in their chosen areas, using this as a vital tool in the delivery of quality training for our students."

I congratulate all our students for a truly marvellous achievement; we are rightly extremely proud of their individual and collective achievements. SRC students are now the newest crop of top vocational and technical skills champions in the UK and will be fantastic ambassadors for the College!"



Construction Student Wins NI Apprentice of the Year

Conor Braniff, a level 2 floor and wall tiling apprentice at the College was presented with the 'Apprentice of the Year' award at the Department for the Economy's annual Northern Ireland Apprenticeship Awards 2023.

Fighting off stiff competition across a wide range of industries and occupations, Conor, who is employed by Tullycross Tiling, is so dedicated to his training that he undertakes an 80 mile round trip to College each week. His tutors commented that "his commitment and attendance is outstanding". His sheer dedication to his course, learning and employment has proved that the skills he is learning and putting into practice are beyond those of others his age. He is also in training to compete in the tiling category of UK Skillbuild final.

Speaking at a ceremony, Mike Brennan, Permanent Secretary at the Department for the Economy, said: "The Northern Ireland Apprenticeship Awards are an opportunity to appreciate those who have made a significant investment in vocational education. The awards ceremony allows us to celebrate the commitment and the immense capability of our apprentices, their employers and the training providers who support them."

OPEN CAMPUS EVENT & JOBS FAIR 2023

26 August 2023, 10am-12pm
Armagh, Newry & Portadown Campuses

Secure your place on a course! Our expert staff will advise and direct you and can offer you a place on a course on the day!

You may also wish to take part in our guided tours of campuses or find out more about available support services.

We are also delighted to welcome local employers who have a range of job opportunities for those wishing to change jobs or careers.

Scan the QR code to register:



Simply The Best Higher Level Apprentice

Aaron Bradley, a Higher Level Apprentice at Southern Regional College, was recently awarded the 'Best Higher Level Apprentice Award' at the Newry Chamber Employee and Team Awards 2022.

Aaron is a student on the Digital Marketing, Advertising, and Communications Higher Level Apprenticeship Programme. He attends College one day per week and works the remaining four days for Newry BID, successfully managing the organisation's social media platforms, creating campaigns, and improving processes. The judges praised Aaron for how quickly he has adapted to his job role and for how much he has learnt!

Great Careers Start Here

As a leading provider of education in the region we would be delighted to welcome you to the SRC family. Our ethos is one where the needs of individual students come first, through access to first class teaching and learning and support where needed. Whether you are a school leaver, a potential apprentice, or an adult wishing to retrain and improve your career prospects, we have a course for you!

Improve your Prospects

We provide students with the right experience and opportunities to progress. Our fantastic team of staff will go the extra mile to support you on every step of your journey. No question is too big, or too small – if there's something you're uncertain about, all you've got to do is ask.

Outstanding Facilities

It's an excellent time to join Southern Regional College. We are a positive and ambitious College, demonstrated through the 2020 opening of two new campuses at Armagh and Banbridge. Our ambitions do not stop here as we look forward to progressing further development of a new campus in central Craigavon and the construction of a new



higher education and innovation centre on Patrick Street in Newry.

Our facilities are outstanding, allowing for real life teaching experiences and we continue to invest in industry-inspired learning spaces where industry leading equipment, technology and software is deployed across all areas. Creating the right learning environment remains a priority for us, thus ensuring that all students are given the best possible introduction to working life.

Join SRC Today

Education has a huge impact on people's lives and Southern Regional College is passionate about enabling people to achieve their goals through high quality learning and training. We are confident we make a real positive difference to the lives of the students that study with us. This is *your* College – so please take full advantage of the supportive environment and maximise your potential.



Media Student Awarded Prestigious All Ireland Scholarship

Kaitlin Murphy, a former Level 3 Extended Diploma Media student at SRC has been awarded an All-Ireland Scholarship of £16,500 to help support her during her photography degree at Ulster University. The extended diploma is equivalent to 3 A-Levels and offers students the opportunity to develop specialist knowledge alongside practical skills.

The All-Ireland Scholarships were established by JP McManus and award the top 25 performing students who attend a grant aided post primary school or a Further Education (FE) college in Northern Ireland with financial support of £5,500 per annum for the duration of their undergraduate degree course.

Stephen Rogan, Head of Faculty for Computing, Design & Academic Studies at Southern Regional College commented:

"It's fantastic that this All-Ireland Scholarship Scheme is available to financially support many gifted and hardworking students to pursue their future ambitions. Kaitlin Murphy is a highly deserving recipient of this award, and the College is delighted she has been selected. I wish Kaitlin every success as she continues her studies at Ulster University and have no doubt her future will be extremely bright!"



Current Applied Industrial Science Higher Level Apprenticeship students pictured alongside Deirdre Murray, Specialist Lecturer of Science (front left); Libby Shackles, Director of Curriculum (front middle) and Laura Martin, Curriculum Area Manager (front right).

SRC top the class with accreditation status

Southern Regional College are the recipients of accreditation status from The Royal Society of Chemistry, recognising the quality of teaching and delivery of our Higher Level Apprenticeship (HLA) in Applied Industrial Sciences. The College is the only Further Education College within Northern Ireland to achieve this accolade!

We are a STEM assured College, the ONLY UK standard that provides independent, industry-backed validation of the quality of an institution's science, technology, engineering, and mathematics provision.

Students enrolling on HLAs work within industry four days a week and attend the College on the fifth day, ensuring students gain the practical knowledge for their chosen

career path. The College partners with local pharmaceutical and clinical diagnostic businesses Norbrook, Almac and Randox to ensure students gain practical experience.

HLAs are open to all adults, not just school leavers. A large proportion of HLA students are adults reskilling or returning to education, as the HLA programme enables a wage to be earned whilst learning. Fees for the programme are fully paid by the Department for the Economy, making HLAs an attractive prospect to minimise student debt.

As students work within partnering businesses, it is essential the business' workplace training meets the standards required by the Royal Society of Chemistry. This close working relationship between partnering businesses and the College was picked up by the Royal Society of Chemistry, who noted "There is a very personalised approach to apprentices' learning."

SRC is also the curriculum HUB within Northern Ireland for life and health sciences and supports other regional colleges in the development of applied science curriculum and professional development opportunities.



SRC Director of Client Services Raymond Sloan pictured alongside SRC Head of Estates Gary Young

We are serious about United Nation Sustainable Development Goals

Southern Regional College is committed to serious change. The College's Chief Executive Brian Doran has signed the Sustainable Development Goals (SDG) Accord; an initiative allied to the college and university sector which

seeks to advance the role education has in delivering solutions to the biggest problems faced by the world.

By signing the Accord, the College has made a commitment to share learnings made with other institutions, both nationally and internationally. The College will report annually on progress made towards achieving goals, ensuring the College remains transparent in efforts to evoke real change. Reports will be shared annually with the UN's High Level Political Forum, ensuring supervision at the top level.

In signing up to become a part of this initiative, Southern Regional College is also demonstrating its commitment to achieving one of the key pillars in the Department for the Economy's 10X Skills Strategy.

The Sustainable Development Goals are a set of seventeen goals covering areas from climate and our planet; poverty and inequality; justice and human rights, to gender equality. These goals form the centre of United Nation's 2030 Agenda. This agenda requires all UN Member States to play their part in finding solutions to the world's most urgent challenges.

We each have a role to play in effecting change, and the College strives to encourage all staff and students to take personal responsibility in changing the world around us. Real change only seems impossible until it has occurred!

FINANCIAL SUPPORT

At Southern Regional College we believe that finance should not be a barrier to learning. The great news is that there is more help available than ever before to finance your journey in education.

Help For Part-Time Accredited Courses

Having difficulty in paying fees? Did you know that if you are enrolling on a part-time course with a qualification, you may be eligible to receive up to 50% discount on tuition fees?

SRC offers tuition fee discount to students who are in receipt of any of the benefits listed below. If you are the dependent or spouse/partner of a person in receipt of these benefits, you may also be entitled to a discount on tuition fees.

- Guaranteed Pension Credit
- Housing Benefit (Rates Rebate) or Rate Relief
- Working Tax Credit (where household income is £16,190 or below)
- Income-Based Employment and Support Allowance
- Income Support
- Income-based Jobseeker's Allowance
- Republic of Ireland Means Tested Benefit
- Universal Credit (within qualifying threshold)

The concession fee payable will be a minimum of £35 and all exam/material fees must be paid in addition to the concession fee.

Other Funding

We want you to enjoy and make the most of your time at SRC. As above, if your part-time course is accredited*, there are several funds available which you can apply to. These can help you pay for course fees, travel, books, childcare or living expenses.

1. Hardship Fund

To apply for the Hardship Fund, you must be 18 years or older and enrolled on a

part-time accredited* course. The level of funding provided will be based on household income thresholds. Students on means tested benefits may be entitled to a repayment of the full course fees paid. Students with income below £33,950, may be entitled to a repayment of at least 50% of course fees paid. Application forms for the Hardship Fund will be available at campus receptions from the start of September 2023.

2. Further Education (FE) Grant

Students who are 19 years old by 1st July 2023, who are on a low income or in receipt of a means tested benefit, can apply for a Further Education Grant to help pay for course fees. Courses eligible must be more than 8 hours per week or have a full-time equivalent programme. Students must also be progressing to a more advanced level of study. You may also receive a grant of £265 for books and equipment. This grant is also means tested. Application forms are available from campus receptions or can be downloaded from <https://www.eani.org.uk/feapplication>. Please note the closing date for the FE Grant is 30 September 2023.

3. Student Loan Company - Higher Education Grant & Loan

a) Tuition Fee and Maintenance Grant
Higher Education students can apply for a means tested Maintenance Grant (non-repayable) up to £3,475 for a full-time student or up to £1,230 for a part-time student. Students who do not qualify for the full Tuition Fee Grant, can apply for a Tuition Fee Loan to help with the payment of fees.

b) Tuition Fee Loan

Students can also apply for Tuition and Maintenance Loans which are non-means tested but are repayable. The amount of loan varies; however, a full-time student can receive up to £4,840 per year living away from home and £3,750 per year living at home. A part-time student can receive up to £3,022.50. Students who already hold a qualification which is equivalent or higher than the new qualification being undertaken will not be eligible for the undergraduate grant or loan. Students MUST apply online via the Education Authority website: www.studentfinancenl.co.uk.

*Accredited courses are those which carry a qualification. A recreational course is not an accredited course.

STUDENT SERVICES AWARDS

Our award-winning Student Services team provide a wide range of support services to ensure that all students have the information, guidance and opportunities that enables them to have an enjoyable and rewarding experience during their time at the College. We offer a range of first-class facilities and support and promote a vibrant Students Union.

All SRC students have access to a personal tutor, professional counselling

service, careers advice service and a student support team who can offer financial, transport and welfare advice.

Our Student Support Services have been recognised for their excellence, having been awarded the Matrix Quality Standard for advice, guidance, and support.



The College's learning support team provide a range of additional support services for students with learning difficulties and disabilities. The quality of this support has been recognised through the achievement of the Autism Specialist Award granted by the National Autistic Society.

Committed to UN Sustainable Development Goals

By Signing the Sustainable Development Goals (SDG) Accord, we have confirmed our commitment to being a sustainable College. We will share learnings with other institutions, and reporting annually on progress made to ensure the College remains transparent in efforts to evoke real change.



RECEIVED YOUR RESULTS? WHAT NEXT? IMPORTANT DATES TO REMEMBER

A-LEVEL RESULTS DAY (THURSDAY 17 AUGUST 2023)

What To Do

If you hold a CONDITIONAL offer for a place on one of our Higher Education courses, you must upload evidence of your results by 5pm on Thursday 17 August 2023. To do this, please log into your SRC application via our online portal (which can be accessed through the SRC website home page by selecting the 'Applications' tab).

Accepting Your Place

If you hold a FIRM offer for a Higher Education course, you must register for your course on Thursday 24 August 2023. If you have

received a FIRM offer following upload of your A-Level results, you will also be required to register on this date and asked to make payment for your course or provide evidence of a Students Loan's Company application.

You will receive further information on the registration process from the College's Admissions team via email and text prior to these dates.

GCSE RESULTS DAY (THURSDAY 24 AUGUST 2023)

What To Do

If you hold a CONDITIONAL offer for a place on one of our Further Education, Traineeship or Apprenticeship courses, you need to upload evidence of your results by 5pm on Thursday 24 August 2023. To do this, please log into your SRC application via our online portal (which can be accessed through the SRC website home page by selecting the 'Applications' tab).

Accepting Your Place

If you hold a FIRM offer for a Further Education, Traineeship or Apprenticeship course, you must register for your course on Wednesday 31 August 2022. If you receive a FIRM offer following upload of your GCSE results, you will also be required to register on this date.

You will receive further information on the

registration process from the College's Admissions team via email and text prior to these dates.

All Students - Important

If you do not upload your results by the dates and times stated above, you may lose your place on your course. If you have difficulty uploading your results, please contact the Admissions Team urgently on 028 3025 9798 or by emailing admissions@src.ac.uk.

If you are not currently studying at the College, you will receive information on the registration process from the College's Admissions team through both email and text. It is important that you read the email carefully as it will contain important information and web links necessary for you to register for virtual events prior to course registration.

Clearing Day

If you have not been successful in securing your first choice place, please come along to our Clearing Day on Thursday 31 August 2023 from 11am to 4pm on all our campuses. On Clearing Day we'll be able to advise you of places still available on our courses and you'll have the opportunity to talk to staff who are more than willing to help.

For more information on any of our new courses starting in September, call our Campus Services Team on 0300 123 1223 or log onto www.src.ac.uk.



Oisín McConville joins up with SRC to support mental health

SRC has joined forces with former Gaelic championship footballer Oisín McConville, to launch a survival toolkit for students moving to Further and Higher Education (FE & HE). Having had his own battles with mental health, Oisín is a firm advocate of the importance of looking after your mental health.

The toolkit consists of insights and hacks to help students navigate and settle into their new surroundings. Additional resources for young people to work through include: what is mental health and wellbeing; financial, social and academic challenges; how to improve your mental health and well-being.

Libby Shackels, Director of Curriculum at Southern Regional College commented "The event was a wonderful opportunity for the College to highlight The Well Project and the importance of maintaining good mental health and well-being. We understand the transition to Higher Education can be daunting and we hope these resources will assist students as they undertake their next steps".

For further information, please visit the website at: <https://www.wellproject.online/home>

600 Courses to choose from

We offer over 600 courses from entry level through to higher education – we have something for everyone!



Raising Awareness of Dementia

Former SRC student Katie Russell is following her passion to become a children's nurse. Currently in the second year of her nursing degree, Katie co-developed a 'Kids Dementia Game' alongside five other nursing students and research staff from QUB, to educate children and young people about dementia. The project is very personal to Katie as her grandfather was given a dementia diagnosis in 2019.

Katie commented: "I've seen first-hand the difficulties that carers face, as well as the emotional toll. People living with dementia

require support, as do those caring for them. Children are curious by nature and are eager to learn. It was evident they don't want to be left in the dark about dementia."

To ensure the project's success, the team collaborated with Dementia NI and Games Focus. Katie's role within the game's development was to conduct research and gather feedback on design and content, provide ideas for how the game should look and be played, and most importantly, act as an advocate for the children who helped design the game to ensure their thoughts and ideas were included.

The game's target audience is for children aged 7-11 but is helpful across all age ranges. It takes about seven minutes to play and is free and available by scanning the QR code:



GET AHEAD AND GET ALL THE INFORMATION YOU NEED

There is a wide range of guides and information available to download at your fingertips. Compiled into single documents, you can find all the information you need in one place.

Our publications are available at: <https://www.src.ac.uk/student-life/downloads>

Check out our website to find the following:

SRC PROSPECTUS 2023-24 – available full-time further and higher education courses, how to apply, support and student activities.

HIGHER LEVEL APPRENTICESHIPS (HLA) BOOKLET 2023-24 – find out more information on one of our degree options that include paid relevant experience with an employer. Plus courses are fully funded!

A-LEVEL ACADEMY BOOKLET 2023-24 – Get an overview of A-Levels available at SRC, course content and how you will be assessed.

SRC PARENT/GUARDIAN GUIDE – We understand it's nerve-wracking for our (grown-up) kids to move to a new educational environment, so we have put together this short guide to let you know about life at SRC and some frequently asked questions.

£50m

We have invested over £50 million in state of the art campuses at Armagh & Banbridge with further planned expansion of our College estates over the next 5 years.

YOU ASKED, WE LISTENED

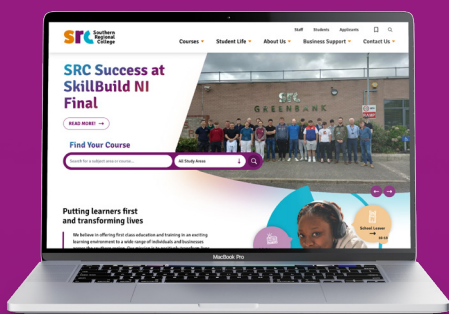
Our prior website, while packed with information was frankly a bit tired, so we thought about how we could do things better. We have now completely redeveloped and redesigned our website to make information easier to locate, from course information to student support services and news and events. We wanted to make our new website easily accessible for web users of all abilities and create a bright modern website.

Last November we launched our new website, jam-packed with information that you need to know about courses and about us. From our navigation bar you can search for everything you need to know about the College; whether it is your next course, careers advice and counselling services or finance matters right through to learning support and activities for students.

We have even included a section all 'About Us'. Here you can find out information on each of the campuses and how we are governed. Or if you are a business searching for additional help, you can find talent through one of our apprenticeships, or various types of support for your training needs or new products and services.

In March 2023 we launched a survey to find out what you thought of this new website, and we were overwhelmed by your response. Over 200 responses were received, from current and prospective students, to parents and guardians, to career teachers and advisers. You validated our efforts, with over 99% of respondents preferring the new website and finding information more accessible.

We have included the opportunity to provide us with further feedback under 'Contact Us' on the navigation bar. So, if there is something you want to let us know about, please leave us a comment. We are always interested to hear from you.



LEARN MORE, EARN MORE

NEW Part-Time Courses from September 2023

GET AN HONOURS DEGREE AT SRC

Whether you're at the start of your journey, wanting to progress in your career or simply need a change of direction, you can now study to honours degree level right at your local college.

This has many benefits:

- Significantly lower tuition fees compared to the same qualification at university
- High course achievement rates
- Stay close to home
- Much financial assistance through grants & loans
- State-of-the-art technology in our modern campuses
- Significant links with local employers so you are getting the skills employers want
- Student support services to assist you during your time at College

And what's more, if you choose to study for your degree through the Higher Level Apprenticeship pathway you will be earning and learning at the same time and getting valuable experience as a paid employee with a local employer.

And just like university, at the end of your studies at SRC, we will celebrate your success at our annual graduation ceremony. Now is your time to shine!

Degrees on offer

- Accounting Technology Level 6 (Hons) Degree (Higher Level Apprenticeship pathway)
- Business Studies BSc (Hons) Degree (validated by Ulster University)
- Computing for Industry BSc (Hons) Degree (validated by Open University) (also offered as a Higher Level Apprenticeship)
- Construction BSc (Hons) Degree* (validated by Open University) (Higher Level Apprenticeship Pathway)
- Creative Imaging BA (Hons) Degree (validated

by Liverpool John Moores University)

- Creative Media & Audio Production BA (Hons) Degree* (validated by Open University)
- Digital Marketing, Advertising & Communications Level 6 (Hons) Degree* (validated by Open University) (Higher Level Apprenticeship Pathway)
- Early Childhood Studies BA (Hons) Degree (validated by Stranmillis University/QUB)
- Engineering BEng (Hons) Degree* (validated by Open University) (also offered as a Higher Level Apprenticeship)
- English & History BA Level 6 Degree (valeted by Liverpool John Moores University)
- Sport & Exercise BSc (Hons) Degree** (validated by Open University)

APPLY FOR YOUR DEGREE TODAY - www.src.ac.uk

* subject to validation by awarding university
** subject to DfE Approval

ACCOUNTING

Payroll for Business Level 2 Award & Level 1 Award-*Chrysalis Centre, Craigavon*

ART, DESIGN & CRAFTS

Drawing Level 3 Award-*Newry*

Interior Design Level 3 Unit-*Armagh, Banbridge & Lurgan*

Ceramics Level 2 Unit-*Armagh, Lurgan & Newry*

Textiles Level 2 Unit-*Banbridge*

Dressmaking Recreational-*Armagh, Lurgan, Newry & Nautilus Centre, Kilkeel*

Art Recreational-*Ti Chulainn Centre, Mullaghbawn*

BARBERING

Barbering Level 3 NVQ Diploma-*Armagh*

Cutting Men's Hair Level 2 Award-*Now also at Armagh*

BEAUTY & COMPLEMENTARY THERAPIES

Body Massage Level 3 Award-*Armagh, Lurgan & Newry*

Artificial Nail Structures Level 3 Certificate-*Now also at Newry*

Reflexology Level 3 Diploma-*Now also at Newry*

Nail Technology Level 2 Award-*Now also at Armagh & Newry*

BUSINESS, MARKETING & FINANCE

Digital Marketing, Advertising & Communications Level 6 (Hons) Degree Higher Level Apprenticeship-*Banbridge*

Fintech Level 5 Foundation Degree Higher Level Apprenticeship-*Newry*

Social Media & Digital Marketing Level 4 Award (FREE Skill UP)-*eCampus*

Underst &ing Customer Service in the Retail Sector Level 2 Unit-*eCampus*

CHILDCARE

Transition to Playwork Level 3 Award (FREE Skill UP)-*eCampus*

Working With Children & Young People with Special Needs Level 3 Unit (FREE Skill UP)-*eCampus*

Understanding How to Support Individuals with Autistic Spectrum Level 3 Unit (FREE Skill UP)-*eCampus*

Managing Challenging Behaviour in Children & Young Adults Level 2 Award (FREE Skill UP)-*eCampus*

Autistic Spectrum Introductory Awareness Level 2 Unit (FREE Skill UP)-*eCampus*

Infant Mental Health Level 1 Award-*Newry*

Introductory Awareness of Autism Level 2 Unit-*Now also at Nautilus Centre, Kilkeel & Chrysalis Centre, Craigavon*

COMPUTING, IT & MULTIMEDIA

Computing for Industry BSc (Hons) Degree Top-Up (part-time route & Higher Level Apprenticeship)-*Portadown*

Data Analytics Level 5 (FREE Skill UP)-*eCampus*

Cyber Security Level 5 (FREE Skill UP)-*eCampus*

Data Analytics Level 4 (FREE Skill UP)-*eCampus*

Cyber Security Level 4 (FREE Skill UP)-*eCampus*

Excel ICDL Modular Unit Level 3 & Level 2 -*Armagh & Banbridge*

Word ICDL Modular Unit Level 3 & Level 2 -*Armagh & Banbridge*

ICDL IT User Skills Level 2 Certificate -*Banbridge, Newry & Chrysalis Centre, Craigavon*

Introduction to Cyber Security Level 2 Certificate (FREE Skill UP)-*eCampus*

Introduction to Programming Using Python MTA Level 2 Unit-*eCampus*

CONSTRUCTION

Construction BSc (Hons) Level 6 Degree Top-Up-*Newry*

Construction (Digital Construction Management) Level 5 Foundation Degree Higher Level Apprenticeship-*Newry*

Construction (Quantity Surveying) Level 5 Foundation Degree (part-time route & Higher Level Apprenticeship)-*Newry*

Domestic Plumbing & Heating Level 3 NVQ -*Greenbank*

Construction & the Built Environment Level 3 Diploma -*Newry*

Civil Engineering Level 3 National Diploma -*Portadown*

Construction & the Built Environment Level 1/2 First Award-*Newry & Portadown*

ENGINEERING

Engineering BEng (Hons) Level 6 Degree Top-Up (Higher Level Apprenticeship)-*Newry*

Engineering (Electrical & Electronic) Level 5 Foundation Degree (part-time route & Higher Level Apprenticeship)-*Newry*

Pneumatic & Hydraulic Systems Level 3 Unit (FREE Skill UP) -*Newry*

Manufacturing Computer Numerical Control Machining Processes Level 3 Unit (FREE Skill UP)-*Portadown*

Programmable Logic Controllers Level 3 Unit (FREE Skill UP)-*Newry & Portadown*

FIRST AID

Paediatric First Aid Level 3 Award (FREE Skill UP) -*Armagh & Banbridge*

Paediatric First Aid Level 3 Award-*Crossmaglen Community Centre*

Emergency First Aid at Work Level 3 Award -*Crossmaglen Community Centre*

GCSE

GCSE Digital Technology (Programming Route)-*Armagh & Newry*

HOSPITALITY & CATERING

Internal Quality Assurance of Assessment Processes & Practice Level 4 Award-*Now also through eCampus*

General Patisserie & Confectionery Level 3 Certificate & Level 2 Certificate-*Newry*

Bakery & Patisserie Techniques Level 2 Award-*Armagh*

Chocolate Making Level 1 Award-*Armagh & Newry*

MANAGEMENT & PROFESSIONAL DEVELOPMENT

Effective Coaching & Mentoring Level 5 Certificate (FREE Skill UP)-*eCampus*

Leadership & Management Level 5 Award & Level 5 Certificate (FREE Skill UP)-*eCampus*

Leadership & Management Level 3 Award (FREE Skill UP)-*eCampus*

MUSIC

Creative Music & Audio Production BA (Hons) Degree Top-Up-*Armagh*

Creative Arts & Digital Technologies (Recording Studio 301) Level 3 Award-*Armagh*

Creative Arts & Digital Technologies Unit (Live Sound 101) Level 2 Award-*Armagh*

Creative Arts & Digital Technologies Unit (Recording Studio 101) Level 2 Award -*Armagh*

MOTOR VEHICLE

Electric/Hybrid Vehicle System Repair & Replacement Level 3 Award (FREE Skill UP) -*Armagh & Portadown*

Electric/Hybrid Vehicle Routine Maintenance Activities Level 2 Award (FREE Skill UP)-*Armagh & Portadown*

Industrial Robotics (Programming & Application) Level 3 (FREE Skill UP)-*Portadown & Newry*

SCIENCE

Biological & Pharmaceutical Science Level 5 Foundation Degree-*Armagh, Newry & Portadown*

Regulation in the Pharmaceutical Industry: Manufacturing & Distribution Level 5 Certificate (FREE Skill UP)-*eCampus*

Chromatography & Spectroscopy Analysis Level 5 Certificate (FREE Skill UP)-*Newry*

Pharmaceutical Industry Regulation Level 4 Certificate (FREE Skill UP)-*eCampus*

Laboratory Skills for Industry Level 4 Certificate (FREE Skill UP)-*Newry*

Pharmaceutical Analytical Quality Control & Analysis Level 4 Certificate (FREE Skill UP)-*Newry*

SIGN LANGUAGE

Makaton Level 2 & Level 1-*Armagh & Newry*

SPORT, EXERCISE & FITNESS

Sport & Exercise BSc (Hons) Degree Top-Up-*Newry*

Sport & Exercise Level 5 Foundation Degree (part-time route & Higher Level Apprenticeship)-*Newry*

Strength & Conditioning Level 4 Certificate-*Newry*

Personal Training Level 3 Certificate-*Now also at Armagh*

Sports Massage Therapy Level 3 Diploma -*Now also at Newry*

Using Technology & Physical Preparation in Gaelic Sports Level 3 Unit-*Newry*

Fitness Instructing Level 2 Certificate-*Now also at Armagh*

TOURISM

International Travel & Tourism Level 4 Higher National Certificate-*Newry*

| Course Code | Course Title | Location | Day | Start Time | End Time | Start Date | End Date | No. of Wks | Tuition Fee | Concession Fee | Exam/Reg Fee | Materials Fee | Apply/Enrol |
|---------------------------------------|---|--------------------------|-----------|------------|----------|------------|----------|------------|-------------|----------------|--------------|---------------|-------------|
| ACCOUNTING | | | | | | | | | | | | | |
| P2199NE | ACCOUNTING TECHNICIANS Level 5 Diploma - Business Law Yr1 ** | Newry Campus | Mon | 18:00 | 19:15 | 11/09/23 | 17/06/24 | 32 | £92 | N/A | E/L | N/A | Apply |
| P2208NP | ACCOUNTING TECHNICIANS Level 5 Diploma - Business Law Yr1 ** | Newry Campus | Mon | 11:30 | 12:45 | 11/09/23 | 17/06/24 | 32 | £92 | N/A | E/L | N/A | Apply |
| P2200NE | ACCOUNTING TECHNICIANS Level 5 Diploma - Business Management Yr1 ** | Newry Campus | Mon | 20:00 | 21:45 | 11/09/23 | 17/06/24 | 32 | £129 | N/A | E/L | N/A | Apply |
| P2210NP | ACCOUNTING TECHNICIANS Level 5 Diploma - Business Management Yr1 ** | Newry Campus | Mon | 16:00 | 17:45 | 11/09/23 | 17/06/24 | 32 | £129 | N/A | E/L | N/A | Apply |
| P2201NE | ACCOUNTING TECHNICIANS Level 5 Diploma - Financial Accounting Yr1 ** | Newry Campus | Mon | 17:45 | 19:45 | 11/09/23 | 17/06/24 | 32 | £147 | N/A | E/L/A | N/A | Apply |
| P2209NP | ACCOUNTING TECHNICIANS Level 5 Diploma - Financial Accounting Yr1 ** | Newry Campus | Mon | 13:45 | 15:45 | 11/09/23 | 17/06/24 | 32 | £147 | N/A | E/L/A | N/A | Apply |
| P2214NE | ACCOUNTING TECHNICIANS Level 5 Diploma - Management Accounting Yr1 ** | Newry Campus | Tue | 17:45 | 19:30 | 12/09/23 | 28/05/24 | 32 | £123 | N/A | E/L | N/A | Apply |
| P2559NP | ACCOUNTING TECHNICIANS Level 5 Diploma - Management Accounting Yr1 ** | Newry Campus | Tue | 14:00 | 15:45 | 12/09/23 | 28/05/24 | 32 | £123 | N/A | E/L | N/A | Apply |
| P2202NE | ACCOUNTING TECHNICIANS Level 5 Diploma - Taxation Yr1 ** | Newry Campus | Mon | 19:30 | 21:30 | 11/09/23 | 17/06/24 | 32 | £147 | N/A | E/L | N/A | Apply |
| P2207NP | ACCOUNTING TECHNICIANS Level 5 Diploma - Taxation Yr1 ** | Newry Campus | Mon | 09:15 | 11:15 | 11/09/23 | 17/06/24 | 32 | £147 | N/A | E/L | N/A | Apply |
| P2206PE | ACCOUNTING TECHNICIANS Level 5 Diploma - Business Law Yr1 ** | Portadown Campus | Thu | 20:00 | 21:15 | 14/09/23 | 30/05/24 | 32 | £92 | N/A | E/L | N/A | Apply |
| P2205PE | ACCOUNTING TECHNICIANS Level 5 Diploma - Business Management Yr1 ** | Portadown Campus | Thu | 18:00 | 19:45 | 14/09/23 | 30/05/24 | 32 | £129 | N/A | E/L | N/A | Apply |
| P2203PE | ACCOUNTING TECHNICIANS Level 5 Diploma - Financial Accounting Yr1 ** | Portadown Campus | Thu | 17:45 | 19:45 | 14/09/23 | 30/05/24 | 32 | £147 | N/A | E/L/A | N/A | Apply |
| P2204PE | ACCOUNTING TECHNICIANS Level 5 Diploma - Taxation Yr1 ** | Portadown Campus | Thu | 20:00 | 22:00 | 14/09/23 | 30/05/24 | 32 | £147 | N/A | E/L | N/A | Apply |
| P2213NE | ACCOUNTING TECHNICIANS Level 5 Diploma - Adv Financial Accounting Yr2 ** | Newry Campus | Tue | 17:45 | 19:45 | 12/09/23 | 28/05/24 | 32 | £141 | N/A | E/L/A | N/A | Apply |
| P2560NP | ACCOUNTING TECHNICIANS Level 5 Diploma - Adv Financial Accounting Yr2 ** | Newry Campus | Tue | 09:15 | 11:15 | 12/09/23 | 28/05/24 | 32 | £141 | N/A | E/L/A | N/A | Apply |
| P2212NE | ACCOUNTING TECHNICIANS Level 5 Diploma - Adv Taxation Yr2 ** | Newry Campus | Tue | 17:45 | 19:45 | 12/09/23 | 28/05/24 | 32 | £141 | N/A | E/L | N/A | Apply |
| P2561NP | ACCOUNTING TECHNICIANS Level 5 Diploma - Adv Taxation Yr2 ** | Newry Campus | Tue | 16:15 | 18:15 | 12/09/23 | 28/05/24 | 32 | £141 | N/A | E/L | N/A | Apply |
| P2557NE | ACCOUNTING TECHNICIANS Level 5 Diploma - Financial Data Management Yr2 ** | Newry Campus | Tue | 20:00 | 21:15 | 12/09/23 | 28/05/24 | 32 | £88 | N/A | E/L | N/A | Apply |
| P2562NP | ACCOUNTING TECHNICIANS Level 5 Diploma - Financial Data Management Yr2 ** | Newry Campus | Tue | 11:30 | 12:45 | 12/09/23 | 28/05/24 | 32 | £88 | N/A | E/L | N/A | Apply |
| P0093ND | ACCOUNTING TECHNICIANS Level 5 Diploma Higher Level Apprenticeship | Newry Campus | Mon | 09:15 | 18:00 | 11/09/23 | 17/06/24 | 32 | FREE | N/A | E/L | N/A | Apply |
| P0709AE | COMPUTERISED BOOKKEEPING AND ACCOUNTING Level 3 Certificate | Armagh Campus | Tue | 19:00 | 21:30 | 19/09/23 | 07/05/24 | 28 | £154 | £77 | £115 | N/A | Apply |
| P0710NE | COMPUTERISED BOOKKEEPING AND ACCOUNTING Level 3 Certificate | Newry Campus | Mon | 19:00 | 21:30 | 18/09/23 | 20/05/24 | 28 | £154 | £77 | £115 | N/A | Apply |
| P0620NE | COMPUTERISED BOOKKEEPING Level 2 Certificate | Newry Campus | Tue | 18:30 | 22:00 | 19/09/23 | 23/01/24 | 16 | £114 | £57 | £100 | N/A | Enrol |
| P3440PE | COMPUTERISED BOOKKEEPING Level 2 Certificate NEW | Portadown Campus | Thu | 18:30 | 22:00 | 21/09/23 | 25/01/24 | 16 | £114 | £57 | £100 | N/A | Enrol |
| P0621NE | COMPUTERISED BOOKKEEPING Level 2 Certificate | Newry Campus | Tue | 18:30 | 22:00 | 06/02/24 | 11/06/24 | 16 | £114 | £57 | £100 | N/A | Enrol |
| P0619AE | COMPUTERISED BOOKKEEPING Level 2 Certificate | Armagh Campus | Thu | 18:30 | 22:00 | 08/02/24 | 13/06/24 | 16 | £114 | £57 | £100 | N/A | Enrol |
| P0622PE | COMPUTERISED BOOKKEEPING Level 2 Certificate | Portadown Campus | Thu | 18:30 | 22:00 | 08/02/24 | 13/06/24 | 16 | £114 | £57 | £100 | N/A | Enrol |
| P0615NE | PAYROLL FOR BUSINESS Level 2 Award | Newry Campus | Tue | 19:00 | 21:30 | 19/09/23 | 23/01/24 | 16 | £88 | £44 | £110 | N/A | Enrol |
| P0617PE | PAYROLL FOR BUSINESS Level 2 Award | Portadown Campus | Thu | 19:00 | 21:30 | 28/09/23 | 01/02/24 | 16 | £88 | £44 | £110 | N/A | Enrol |
| P0616NE | PAYROLL FOR BUSINESS Level 2 Award | Newry Campus | Tue | 19:00 | 21:30 | 06/02/24 | 11/06/24 | 16 | £88 | £44 | £110 | N/A | Enrol |
| P0618PE | PAYROLL FOR BUSINESS Level 2 Award | Portadown Campus | Thu | 19:00 | 21:30 | 08/02/24 | 13/06/24 | 16 | £88 | £44 | £110 | N/A | Enrol |
| P0613NE | COMPUTERISED BOOKKEEPING Level 1 Award | Newry Campus | Mon | 19:00 | 21:00 | 18/09/23 | 15/01/24 | 15 | £66 | £35 | £90 | N/A | Enrol |
| P0611AE | COMPUTERISED BOOKKEEPING Level 1 Award | Armagh Campus | Thu | 19:00 | 21:00 | 28/09/23 | 25/01/24 | 15 | £66 | £35 | £90 | N/A | Enrol |
| P0614PE | COMPUTERISED BOOKKEEPING Level 1 Award | Portadown Campus | Thu | 19:00 | 21:00 | 05/10/23 | 01/02/24 | 15 | £66 | £35 | £90 | N/A | Enrol |
| P0612AE | COMPUTERISED BOOKKEEPING Level 1 Award | Armagh Campus | Thu | 19:00 | 21:00 | 08/02/24 | 06/06/24 | 15 | £66 | £35 | £90 | N/A | Enrol |
| ACCOUNTING - COURSES IN THE COMMUNITY | | | | | | | | | | | | | |
| P3620YP | PAYROLL FOR BUSINESS Level 2 Award NEW | Chrysalis Centre, C/Avon | Wed & Thu | 10:00 | 13:15 | 20/09/23 | 16/11/23 | 8 | £88 | £44 | £110 | N/A | Enrol |
| P1155WE | COMPUTERISED BOOKKEEPING Level 2 Certificate | Cullyhanna Wald Centre | Tue | 18:30 | 22:00 | 20/02/24 | 18/06/24 | 16 | £114 | £57 | £100 | N/A | Enrol |
| P1153WE | COMPUTERISED BOOKKEEPING Level 1 Award | Cullyhanna Wald Centre | Tue | 19:00 | 21:00 | 19/09/23 | 16/01/24 | 15 | £66 | £35 | £90 | N/A | Enrol |
| P3619YP | PAYROLL FOR BUSINESS Level 1 Award NEW | Chrysalis Centre, C/Avon | Mon & Tue | 10:00 | 13:15 | 25/09/23 | 21/11/23 | 8 | TBC | TBC | TBC | N/A | Enrol |
| ADULT ACCESS TO UNIVERSITY | | | | | | | | | | | | | |
| P0420PE | ADULT LEARNING SCIENCE Level 3 Diploma * | Portadown Campus | Tue & Thu | 17:45 | 22:00 | 12/09/23 | 30/05/24 | 32 | £493 | £247 | £155 | N/A | Apply |
| P3064ND | ADULT LEARNING ARTS AND HUMANITIES Level 3 Diploma * NEW | Newry Campus | Tue | 09:15 | 18:15 | 12/09/23 | 28/05/24 | 32 | £493 | £247 | N/A | N/A | Apply |
| AGRICULTURE & HORTICULTURE | | | | | | | | | | | | | |
| P0771GP | GARDENING - THE AUTUMN GARDENER Recreational | Greenbank Campus | Tue | 12:30 | 15:45 | 19/09/23 | 28/11/23 | 10 | £96 | N/A | N/A | £20 | Enrol |
| P0770GP | GARDENING - THE AUTUMN GARDENER Recreational | Greenbank Campus | Fri | 09:30 | 12:45 | 29/09/23 | 08/12/23 | 10 | £96 | N/A | N/A | £20 | Enrol |
| P0777PP | GARDENING - THE AUTUMN GARDENER Recreational | Portadown Campus | Wed | 09:30 | 12:45 | 04/10/23 | 13/12/23 | 10 | £96 | N/A | N/A | £20 | Enrol |
| P0778PP | GARDENING - THE AUTUMN GARDENER Recreational | Portadown Campus | Wed | 14:00 | 17:15 | 04/10/23 | 13/12/23 | 10 | £96 | N/A | N/A | £20 | Enrol |
| P0773GP | GARDENING - THE SPRING GARDENER Recreational | Greenbank Campus | Tue | 12:30 | 15:45 | 02/01/24 | 19/03/24 | 10 | £96 | N/A | N/A | £20 | Enrol |
| P0779PP | GARDENING - THE SPRING GARDENER Recreational | Portadown Campus | Tue | 14:00 | 17:15 | 09/01/24 | 19/03/24 | 10 | £96 | N/A | N/A | £20 | Enrol |
| P0780PP | GARDENING - THE SPRING GARDENER Recreational | Portadown Campus | Wed | 09:30 | 12:45 | 10/01/24 | 20/03/24 | 10 | £96 | N/A | N/A | £20 | Enrol |
| P0781PP | GARDENING - THE SPRING GARDENER Recreational | Portadown Campus | Wed | 14:00 | 17:15 | 10/01/24 | 20/03/24 | 10 | £96 | N/A | N/A | £20 | Enrol |
| P0772GP | GARDENING - THE SPRING GARDENER Recreational | Greenbank Campus | Fri | 09:30 | 12:45 | 12/01/24 | 22/03/24 | 10 | £96 | N/A | N/A | £20 | Enrol |
| P0774GP | GARDENING - THE SUMMER GARDENER Recreational | Greenbank Campus | Tue | 12:30 | 15:45 | 09/04/24 | 11/06/24 | 10 | £96 | N/A | N/A | £20 | Enrol |
| P0782PP | GARDENING - THE SUMMER GARDENER Recreational | Portadown Campus | Tue | 14:00 | 17:15 | 09/04/24 | 11/06/24 | 10 | £96 | N/A | N/A | £20 | Enrol |
| P0783PP | GARDENING - THE SUMMER GARDENER Recreational | Portadown Campus | Wed | 09:30 | 12:45 | 10/04/24 | 12/06/24 | 10 | £96 | N/A | N/A | £20 | Enrol |
| P0784PP | GARDENING - THE SUMMER GARDENER Recreational | Portadown Campus | Wed | 14:00 | 17:15 | 10/04/24 | 12/06/24 | 10 | £96 | N/A | N/A | £20 | Enrol |
| P0775GP | GARDENING - THE SUMMER GARDENER Recreational | Greenbank Campus | Fri | 09:30 | 12:45 | 19/04/24 | 21/06/24 | 10 | £96 | N/A | N/A | £20 | Enrol |
| AS/A-LEVELS | | | | | | | | | | | | | |
| P0343AE | SOCIOLOGY Level 3 Advanced GCE (Blended) | Armagh & eCampus | Mon & Thu | 18:00 | 21:15 | 25/09/23 | 30/05/24 | 30 | £396 | £198 | N/A | N/A | Apply |
| P0347AE | BUSINESS STUDIES Level 3 Advanced Subsidiary GCE (Blended) | Armagh & eCampus | Mon & Thu | 18:00 | 21:15 | 18/09/23 | 18/01/24 | 15 | £198 | £99 | N/A | N/A | Apply |

COURSE KEY

* - Year 1 fee only
** - Module fee only
U - Students required to purchase uniform

K - Students required to purchase kit
E - Exams fee payable
L - Licence fee payable

A - Administration fee payable
e-Campus - course delivered fully online or blended learning (% on campus & % online)

INVESTORS
IN PEOPLE®

Our staff are our most valuable asset! We hold the Investors in People accreditation for leading, supporting and improving our people and culture.

| Course Code | Course Title | Location | Day | Start Time | End Time | Start Date | End Date | No. of Wks | Tuition Fee | Concession Fee | Exam/Reg Fee | Materials Fee | Apply/Enrol |
|---|---|---------------------------------|-----------|------------|----------|------------|----------|------------|-------------|----------------|--------------|---------------|-------------|
| ART, DESIGN & CRAFTS | | | | | | | | | | | | | |
| P0001BD | CREATIVE IMAGING BA (Hons) Level 6 Degree * | Banbridge Campus | Mon | 09:00 | 18:15 | 11/09/23 | 13/05/24 | 30 | £552 | N/A | N/A | £35 | Apply |
| P0011NP | ART AND DESIGN - ART PRACTICE Level 5 Higher National Diploma * | Newry Campus | Thu & Fri | 09:15 | 14:45 | 14/09/23 | 31/05/24 | 32 | £589 | N/A | £314 | £60 | Apply |
| P0008BD | ART AND DESIGN - GRAPHIC DESIGN Level 5 Higher National Diploma * | Banbridge Campus | Tue & Wed | 09:00 | 17:15 | 12/09/23 | 29/05/24 | 32 | £1,030 | N/A | £314 | £60 | Apply |
| P0008BD | ART AND DESIGN - GRAPHIC DESIGN Level 5 Higher National Diploma * | Banbridge Campus | Tue & Wed | 09:00 | 17:15 | 12/09/23 | 29/05/24 | 32 | £1,030 | N/A | £314 | £60 | Apply |
| P0352ND | ART AND DESIGN Level 3 Foundation Diploma * | Newry Campus | Tue | 09:15 | 17:00 | 12/09/23 | 12/06/24 | 34 | £636 | £318 | N/A | N/A | Apply |
| P3526NP | DRAWING Level 3 Award NEW | Newry Campus | Fri | 09:30 | 12:45 | 06/10/23 | 29/03/24 | 20 | £132 | £66 | £68 | N/A | Enrol |
| P3218BE | CRAFTS INTERIOR DESIGN Level 3 Unit NEW | Banbridge Campus | Tue | 18:30 | 21:00 | 26/09/23 | 19/12/23 | 12 | £66 | £35 | £32 | £25 | Enrol |
| P3219LE | CRAFTS INTERIOR DESIGN Level 3 Unit NEW | Lurgan Campus | Tue | 18:30 | 21:00 | 26/09/23 | 19/12/23 | 12 | £66 | £35 | £32 | £25 | Enrol |
| P3221AE | CRAFTS INTERIOR DESIGN Level 3 Unit NEW | Armagh Campus | Thu | 18:30 | 21:00 | 28/09/23 | 21/12/23 | 12 | £66 | £35 | £32 | £25 | Enrol |
| P3222BE | CRAFTS INTERIOR DESIGN Level 3 Unit NEW | Banbridge Campus | Tue | 18:30 | 21:00 | 30/01/24 | 07/05/24 | 12 | £66 | £35 | £32 | £25 | Enrol |
| P3223LE | CRAFTS INTERIOR DESIGN Level 3 Unit NEW | Lurgan Campus | Tue | 18:30 | 21:00 | 30/01/24 | 07/05/24 | 12 | £66 | £35 | £32 | £25 | Enrol |
| P3225AE | CRAFTS INTERIOR DESIGN Level 3 Unit NEW | Armagh Campus | Thu | 18:30 | 21:00 | 01/02/24 | 09/05/24 | 12 | £66 | £35 | £32 | £25 | Enrol |
| P1953NP | DRAWING Level 2 Award | Newry Campus | Fri | 13:00 | 16:15 | 06/10/23 | 15/03/24 | 20 | £132 | £66 | £72 | N/A | Enrol |
| P3211LE | CRAFTS CERAMICS Level 2 Unit NEW | Lurgan Campus | Wed | 18:30 | 20:30 | 27/09/23 | 20/12/23 | 12 | £53 | £35 | £32 | £25 | Enrol |
| P3209NE | CRAFTS CERAMICS Level 2 Unit NEW | Newry Campus | Wed | 18:30 | 20:30 | 27/09/23 | 20/12/23 | 12 | £53 | £35 | £32 | £25 | Enrol |
| P3210AE | CRAFTS CERAMICS Level 2 Unit NEW | Armagh Campus | Thu | 18:30 | 20:30 | 28/09/23 | 21/12/23 | 12 | £53 | £35 | £32 | £25 | Enrol |
| P3214LE | CRAFTS CERAMICS Level 2 Unit NEW | Lurgan Campus | Wed | 18:30 | 20:30 | 31/01/24 | 08/05/24 | 12 | £53 | £35 | £32 | £25 | Enrol |
| P3212NE | CRAFTS CERAMICS Level 2 Unit NEW | Newry Campus | Wed | 18:30 | 20:30 | 31/01/24 | 08/05/24 | 12 | £53 | £35 | £32 | £25 | Enrol |
| P3213AE | CRAFTS CERAMICS Level 2 Unit NEW | Armagh Campus | Thu | 18:30 | 20:30 | 01/02/24 | 09/05/24 | 12 | £53 | £35 | £32 | £25 | Enrol |
| P3208LE | CRAFTS JEWELLERY MAKING TECHNIQUES Level 2 Unit NEW | Lurgan Campus | Wed | 19:00 | 21:00 | 27/09/23 | 20/12/23 | 12 | £53 | £35 | £32 | £25 | Enrol |
| P3206NE | CRAFTS JEWELLERY MAKING TECHNIQUES Level 2 Unit NEW | Newry Campus | Wed | 18:30 | 20:30 | 27/09/23 | 20/12/23 | 12 | £53 | £35 | £32 | £25 | Enrol |
| P3217LE | CRAFTS JEWELLERY MAKING TECHNIQUES Level 2 Unit NEW | Lurgan Campus | Wed | 19:00 | 21:00 | 31/01/24 | 08/05/24 | 12 | £53 | £35 | £32 | £25 | Enrol |
| P3215NE | CRAFTS JEWELLERY MAKING TECHNIQUES Level 2 Unit NEW | Newry Campus | Wed | 18:30 | 20:30 | 31/01/24 | 08/05/24 | 12 | £53 | £35 | £32 | £25 | Enrol |
| P3228BE | CRAFTS TEXTILES Level 2 Unit NEW | Banbridge Campus | Tue | 18:30 | 20:30 | 26/09/23 | 19/12/23 | 12 | £53 | £35 | £32 | £25 | Enrol |
| P3230BE | CRAFTS TEXTILES Level 2 Unit NEW | Banbridge Campus | Tue | 19:00 | 21:00 | 30/01/24 | 07/05/24 | 12 | £53 | £35 | £32 | £25 | Enrol |
| P3999NP | CRAFTS TEXTILES Recreational | Newry Campus | Tue | 11:00 | 13:00 | 19/09/23 | 12/12/23 | 12 | £77 | N/A | N/A | £20 | Enrol |
| P4000NP | CRAFTS TEXTILES Recreational | Newry Campus | Tue | 11:00 | 13:00 | 16/01/24 | 19/05/23 | 12 | £77 | N/A | N/A | £20 | Enrol |
| P0509AP | ART Recreational | Armagh Campus | Mon | 14:00 | 16:00 | 11/09/23 | 04/12/23 | 12 | £77 | N/A | N/A | £6 | Enrol |
| P0513LP | ART Recreational | Lurgan Campus | Fri | 09:15 | 11:45 | 15/09/23 | 08/12/23 | 12 | £96 | N/A | N/A | £6 | Enrol |
| P0516NP | ART Recreational | Newry Campus | Mon | 10:00 | 12:00 | 18/09/23 | 11/12/23 | 12 | £77 | N/A | N/A | £6 | Enrol |
| P1968NP | ART Recreational | Newry Campus | Mon | 10:00 | 12:00 | 18/09/23 | 11/12/23 | 12 | £77 | N/A | N/A | £6 | Enrol |
| P0511BP | ART Recreational | Banbridge Campus | Mon | 14:00 | 16:00 | 25/09/23 | 18/12/23 | 12 | £77 | N/A | N/A | £6 | Enrol |
| P2484AE | ART Recreational | Armagh Campus | Mon | 18:30 | 20:30 | 09/10/23 | 18/12/23 | 10 | £64 | N/A | N/A | £6 | Enrol |
| P0508AE | ART Recreational | Armagh Campus | Mon | 18:30 | 20:30 | 08/01/24 | 08/04/24 | 10 | £64 | N/A | N/A | £6 | Enrol |
| P0510AP | ART Recreational | Armagh Campus | Mon | 14:00 | 16:00 | 08/01/24 | 22/04/24 | 12 | £77 | N/A | N/A | £6 | Enrol |
| P0517NP | ART Recreational | Newry Campus | Mon | 10:00 | 12:00 | 08/01/24 | 22/04/24 | 12 | £77 | N/A | N/A | £6 | Enrol |
| P0514LP | ART Recreational | Lurgan Campus | Fri | 09:15 | 11:45 | 12/01/24 | 19/04/24 | 12 | £96 | N/A | N/A | £6 | Enrol |
| P0512BP | ART Recreational | Banbridge Campus | Mon | 14:00 | 16:00 | 29/01/24 | 20/05/24 | 12 | £77 | N/A | N/A | £6 | Enrol |
| P2469NP | CRAFTS - BEGINNERS KNITTING Recreational | Newry Campus | Wed | 14:00 | 16:00 | 20/09/23 | 13/12/23 | 12 | £77 | N/A | N/A | £6 | Enrol |
| P3078NP | CRAFTS - BEGINNERS KNITTING Recreational | Newry Campus | Wed | 14:00 | 16:00 | 31/01/24 | 08/05/24 | 12 | £77 | N/A | N/A | £6 | Enrol |
| P2113AE | CRAFTS - CERAMICS Recreational | Armagh Campus | Mon | 19:00 | 21:00 | 22/01/24 | 29/04/24 | 12 | £77 | N/A | N/A | £25 | Enrol |
| P0519AE | CRAFTS - CHRISTMAS CRAFTS Recreational | Armagh Campus | Mon | 19:00 | 21:00 | 06/11/23 | 11/12/23 | 6 | £38 | N/A | N/A | £15 | Enrol |
| P0520LE | CRAFTS - CHRISTMAS CRAFTS Recreational | Lurgan Campus | Wed | 19:00 | 21:00 | 08/11/23 | 13/12/23 | 6 | £38 | N/A | N/A | £15 | Enrol |
| P0522NE | CRAFTS - CHRISTMAS CRAFTS Recreational | Newry Campus | Tue | 19:00 | 21:00 | 07/11/23 | 12/12/23 | 6 | £38 | N/A | N/A | £15 | Enrol |
| P0524AE | DRESSMAKING Recreational NEW | Armagh Campus | Mon | 19:00 | 21:00 | 18/09/23 | 11/12/23 | 12 | £77 | N/A | N/A | £6 | Enrol |
| P0525LE | DRESSMAKING Recreational NEW | Lurgan Campus | Tue | 19:00 | 21:00 | 19/09/23 | 12/12/23 | 12 | £77 | N/A | N/A | £6 | Enrol |
| P0528NE | DRESSMAKING Recreational NEW | Newry Campus | Tue | 19:00 | 21:00 | 19/09/23 | 12/12/23 | 12 | £77 | N/A | N/A | £6 | Enrol |
| P0526LE | DRESSMAKING Recreational NEW | Lurgan Campus | Wed | 19:00 | 21:00 | 20/09/23 | 13/12/23 | 12 | £77 | N/A | N/A | £6 | Enrol |
| P3794AE | DRESSMAKING Recreational NEW | Armagh Campus | Mon | 19:00 | 21:00 | 15/01/24 | 22/04/24 | 12 | £77 | N/A | N/A | £6 | Enrol |
| P0527LE | DRESSMAKING Recreational NEW | Lurgan Campus | Tue | 19:00 | 21:00 | 16/01/24 | 23/04/24 | 12 | £77 | N/A | N/A | £6 | Enrol |
| P0529NE | DRESSMAKING Recreational NEW | Newry Campus | Tue | 19:00 | 21:00 | 23/01/24 | 30/04/24 | 12 | £77 | N/A | N/A | £6 | Enrol |
| P2789WE | DRESSMAKING Recreational NEW | Newry Campus | Wed | 19:00 | 21:00 | 31/01/24 | 08/05/24 | 12 | £77 | N/A | N/A | £6 | Enrol |
| P0541NE | JEWELLERY MAKING Recreational | Newry Campus | Wed | 18:30 | 20:30 | 27/09/23 | 06/12/23 | 10 | £64 | N/A | N/A | £25 | Enrol |
| P0542NE | JEWELLERY MAKING Recreational | Newry Campus | Wed | 18:30 | 20:30 | 31/01/24 | 24/04/24 | 10 | £64 | N/A | N/A | £25 | Enrol |
| ART, DESIGN & CRAFTS - COURSES IN THE COMMUNITY | | | | | | | | | | | | | |
| P1053YP | ART Recreational | Aghalee Village Hall | Mon | 10:15 | 12:15 | 11/09/23 | 27/11/23 | 11 | £70 | N/A | N/A | £6 | Enrol |
| P1051WP | ART Recreational | Crossmaglen Community Centre | Thu | 10:00 | 12:00 | 21/09/23 | 30/11/23 | 10 | £64 | N/A | N/A | £6 | Enrol |
| P3792WP | ART Recreational NEW | Ti Chulainn Centre Mullaghbawn | Mon | 10:00 | 12:00 | 25/09/23 | 04/12/23 | 10 | £64 | N/A | N/A | £6 | Enrol |
| P1067WE | ART Recreational | Mountnorris Millennium, Armagh | Wed | 19:30 | 21:30 | 27/09/23 | 06/12/23 | 10 | £64 | N/A | N/A | £6 | Enrol |
| P1069WE | ART Recreational | Warrenpoint Parish Hall | Thu | 19:00 | 21:00 | 28/09/23 | 07/12/23 | 10 | £64 | N/A | N/A | £6 | Enrol |
| P1070WE | ART Recreational | Warrenpoint Parish Hall | Thu | 19:00 | 21:00 | 11/01/24 | 21/03/24 | 10 | £64 | N/A | N/A | £6 | Enrol |
| P1054YP | ART Recreational | Aghalee Village Hall | Mon | 10:15 | 12:15 | 15/01/24 | 20/05/24 | 15 | £96 | N/A | N/A | £6 | Enrol |
| P1052WP | ART Recreational | Crossmaglen Community Centre | Thu | 10:00 | 12:00 | 25/01/24 | 18/04/24 | 10 | £64 | N/A | N/A | £6 | Enrol |
| P1068WE | ART Recreational | Mountnorris Millennium, Armagh | Wed | 19:30 | 21:30 | 21/02/24 | 08/05/24 | 10 | £64 | N/A | N/A | £6 | Enrol |
| P3793WP | ART Recreational NEW | Ti Chulainn Centre, Mullaghbawn | Mon | 10:00 | 12:00 | 26/02/24 | 03/06/24 | 10 | £64 | N/A | N/A | £6 | Enrol |
| P1050WE | ART Recreational | Warrenpoint Parish Hall | Thu | 19:00 | 21:00 | 18/04/24 | 20/06/24 | 10 | £64 | N/A | N/A | £6 | Enrol |
| P1044WP | DRESSMAKING Recreational | Crossmaglen Community Centre | Mon | 12:00 | 14:00 | 25/09/23 | 18/12/23 | 12 | £77 | N/A | N/A | £6 | Enrol |
| P2012WP | DRESSMAKING Recreational | Rathfriland HUB | Mon | 14:00 | 16:00 | 02/10/23 | 13/11/23 | 6 | £38 | N/A | N/A | £6 | Enrol |
| P3791WE | DRESSMAKING Recreational NEW | Nautilus Centre, Kilkeel | Tue | 19:00 | 21:00 | 23/01/24 | 30/04/24 | 12 | £77 | N/A | N/A | £6 | Enrol |
| P2736WP | UPHOLSTERY Recreational NEW | Rathfriland HUB | Wed | 12:00 | 14:00 | 13/09/23 | 06/12/23 | 12 | £77 | N/A | N/A | N/A | Enrol |
| P2636YP | UPHOLSTERY Recreational NEW | Aghalee Village Hall | Fri | 12:30 | 14:30 | 15/09/23 | 08/12/23 | 12 | £77 | N/A | N/A | N/A | Enrol |
| P2637YP | UPHOLSTERY Recreational NEW | Aghalee Village Hall | Fri | 14:30 | 16:30 | 15/09/23 | 08/12/23 | 12 | £77 | N/A | N/A | N/A | Enrol |
| P2638YP | UPHOLSTERY Recreational NEW | Aghalee Village Hall | Fri | 10:00 | 12:00 | 15/09/23 | 08/12/23 | 12 | £77 | N/A | N/A | N/A | Enrol |
| P1976XE | UPHOLSTERY Recreational | Rathfriland HUB | Thu | 19:00 | 21:00 | 21/09/23 | 14/12/23 | 12 | £77 | N/A | N/A | N/A | Enrol |
| P2843YP | UPHOLSTERY Recreational NEW | Aghalee Village Hall | Fri | 14:30 | 16:30 | 19/01/24 | 26/04/24 | 12 | £77 | N/A | N/A | N/A | Enrol |
| P2844YP | UPHOLSTERY Recreational NEW | Aghalee Village Hall | Fri | 10:00 | 12:00 | 19/01/24 | 26/04/24 | 12 | £77 | N/A | N/A | N/A | Enrol |
| P1105XE | UPHOLSTERY Recreational | Rathfriland HUB | Tue | 19:00 | 21:00 | 23/01/24 | 30/04/24 | 12 | £77 | N/A | N/A | N/A | Enrol |
| P1107WP | UPHOLSTERY Recreational | Rathfriland HUB | Wed | 12:00 | 14:00 | 24/01/24 | 01/05/24 | 12 | £77 | N/A | N/A | N/A | Enrol |
| P3371XE | UPHOLSTERY Recreational NEW | Rathfriland HUB | Thu | 19:00 | 21:00 | 25/01/24 | 02/05/24 | 12 | £77 | N/A | N/A | N/A | Enrol |
| P2842YP | UPHOLSTERY Recreational NEW | Aghalee Village Hall | Fri | 12:30 | 14:30 | 26/01/24 | 03/05/24 | 12 | £77 | N/A | N/A | N/A | Enrol |

COURSE KEY

- * - Year 1 fee only
- ** - Module fee only
- U - Students required to purchase uniform

- K - Students required to purchase kit
- E - Exams fee payable
- L - Licence fee payable

- A - Administration fee payable
- e-Campus - course delivered fully online or blended learning (% on campus & % online)

| Course Code | Course Title | Location | Day | Start Time | End Time | Start Date | End Date | No. of Wks | Tuition Fee | Concession Fee | Exam/Reg Fee | Materials Fee | Apply/Enrol |
|---------------------------------------|---|--------------------|-----------|------------|----------|------------|----------|------------|-------------|----------------|--------------|---------------|-------------|
| BEAUTY & COMPLEMENTARY THERAPY | | | | | | | | | | | | | |
| P3673ND | HAIR AND BEAUTY MANAGEMENT Level 5 Extended Diploma * | Newry Campus | Mon | 09:15 | 20:30 | 11/09/23 | 17/06/24 | 32 | £662 | N/A | £160 | U/K | Apply |
| P3671LE | REFLEXOLOGY FOR THE COMPLEMENTRY THERAPIST Level 4 Diploma | Lurgan Campus | Wed | 17:00 | 21:00 | 13/09/23 | 29/05/24 | 32 | £294 | N/A | £142 | U/K | Apply |
| P3124LE | BODY MASSAGE Level 3 Award NEW | Lurgan Campus | Tue | 17:00 | 21:00 | 09/01/24 | 28/05/24 | 18 | £158 | £79 | £41 | U/K | Enrol |
| P3123NE | BODY MASSAGE Level 3 Award NEW | Newry Campus | Tue | 17:00 | 21:00 | 09/01/24 | 28/05/24 | 18 | £158 | £79 | £41 | U/K | Enrol |
| P3122AE | BODY MASSAGE Level 3 Award NEW | Armagh Campus | Thu | 17:00 | 21:00 | 11/01/24 | 30/05/24 | 18 | £158 | £79 | £41 | U/K | Enrol |
| P0384LE | ARTIFICIAL NAIL STRUCTURES Level 3 Certificate | Lurgan Campus | Wed | 17:30 | 21:00 | 20/09/23 | 22/05/24 | 30 | £231 | £116 | £42 | U/K | Enrol |
| P0383AP | ARTIFICIAL NAIL STRUCTURES Level 3 Certificate | Armagh Campus | Thu | 16:30 | 20:00 | 21/09/23 | 23/05/24 | 30 | £231 | £116 | £42 | U/K | Enrol |
| P3109NP | ARTIFICIAL NAIL STRUCTURES Level 3 Certificate NEW | Newry Campus | Mon | 12:30 | 16:00 | 25/09/23 | 17/06/24 | 30 | £231 | £116 | £45 | U/K | Enrol |
| P0397LE | REFLEXOLOGY Level 3 Diploma | Lurgan Campus | Tue | 17:00 | 21:00 | 19/09/23 | 21/05/24 | 30 | £264 | £132 | £131 | U/K | Enrol |
| P3126NE | REFLEXOLOGY Level 3 Diploma NEW | Newry Campus | Tue | 17:00 | 21:00 | 19/09/23 | 21/05/24 | 30 | £264 | £132 | £136 | U/K | Enrol |
| P0404AE | BEAUTY THERAPY Level 2 Diploma * | Armagh Campus | Mon | 17:00 | 21:00 | 18/09/23 | 10/06/24 | 30 | £264 | £132 | £123 | U/K | Enrol |
| P0406NE | BEAUTY THERAPY Level 2 Diploma * | Newry Campus | Mon | 17:00 | 21:00 | 18/09/23 | 10/06/24 | 30 | £264 | £132 | £123 | U/K | Enrol |
| P3108WE | NAIL TECHNOLOGY Level 2 Award NEW | Newry Campus | Tue | 17:00 | 21:00 | 03/10/23 | 09/01/24 | 12 | £106 | £53 | £55 | N/A | Enrol |
| P2959VE | NAIL TECHNOLOGY Level 2 Award NEW | Armagh Campus | Thu | 17:00 | 21:00 | 05/10/23 | 11/01/24 | 12 | £106 | £53 | £55 | N/A | Enrol |
| P1151YP | NAIL TECHNOLOGY Level 2 Award | Lurgan Campus | Mon | 12:00 | 16:00 | 06/11/23 | 05/02/24 | 12 | £106 | N/A | N/A | N/A | Enrol |
| BUSINESS, MARKETING & FINANCE | | | | | | | | | | | | | |
| P3869BD | DIGITAL MARKETING, ADVERTISING AND COMMUNICATIONS Level 6 (Hons) Degree Higher Level Apprenticeship NEW | Banbridge Campus | Thu | 09:15 | 19:15 | 14/09/23 | 28/08/24 | 42 | FREE | N/A | N/A | N/A | Apply |
| P0071NE | BUSINESS STUDIES Level 6 BSc (Hons) Degree ** | Newry Campus | Tue | 17:30 | 21:30 | 11/09/23 | 15/01/24 | 16 | £129 | N/A | £550 | N/A | Apply |
| P3868BD | DIGITAL MARKETING, ADVERTISING AND COMMUNICATIONS Foundation Degree * NEW | Banbridge Campus | Mon | 09:15 | 19:30 | 11/09/23 | 12/08/24 | 39 | £807 | N/A | £565 | N/A | Apply |
| P3867BD | DIGITAL MARKETING, ADVERTISING AND COMMUNICATIONS Foundation Degree Higher Level Apprenticeship | Banbridge Campus | Mon | 09:15 | 19:30 | 11/09/23 | 12/08/24 | 42 | FREE | N/A | N/A | N/A | Apply |
| P3796ND | FINTECH Level 5 Foundation Degree Higher Level Apprenticeship NEW | Newry Campus | Mon | 09:15 | 19:30 | 11/09/23 | 19/08/24 | 42 | FREE | N/A | N/A | N/A | Apply |
| P2712SE | SOCIAL MEDIA AND DIGITAL MARKETING Level 4 Award NEW FREE Skill UP | eCampus | Mon | 17:45 | 22:00 | 18/09/23 | 11/12/23 | 12 | FREE | FREE | FREE | FREE | Apply |
| P2713SE | SOCIAL MEDIA AND DIGITAL MARKETING Level 4 Award NEW FREE Skill UP | eCampus | Mon & Wed | 18:30 | 21:45 | 22/01/24 | 08/04/24 | 8 | FREE | FREE | FREE | FREE | Apply |
| P2732SP | WOMEN RETURNERS BUSINESS ADMIN PROGRAMME FREE Skill UP | Greenshoots, Newry | Mon - Fri | 09:30 | 13:15 | 25/09/23 | 15/03/24 | 21 | FREE | FREE | FREE | FREE | Apply |
| P0396ND | BUSINESS ADMINISTRATION Level 3 Diploma | Newry Campus | Tue | 09:15 | 17:00 | 05/09/23 | 04/06/24 | 34 | £449 | £225 | £182 | N/A | Apply |
| P3826DE | UNDERSTANDING CUSTOMER SERVICE IN THE RETAIL SECTOR Level 2 Unit NEW | eCampus | Tue | 19:00 | 21:00 | 19/09/23 | 16/01/24 | 15 | £66 | £35 | N/A | N/A | Enrol |
| CHILDCARE & SPECIAL EDUCATIONAL NEEDS | | | | | | | | | | | | | |
| P0039NP | EARLY CHILDHOOD STUDIES BA (Hons) * | Newry Campus | Wed | 15:00 | 19:30 | 24/01/24 | 31/05/24 | 32 | TBC | TBC | TBC | TBC | Apply |
| P2192NE | LEADERSHIP FOR CHILDREN'S CARE LEARNING AND DEVELOPMENT (MANAGEMENT) Level 5 Diploma * NEW | Newry Campus | Wed | 18:30 | 21:45 | 13/09/23 | 29/05/24 | 32 | £589 | N/A | £225 | N/A | Apply |
| P0057NP | EARLY CHILDHOOD STUDIES Level 5 Foundation Degree * | Newry Campus | Mon | 13:00 | 22:00 | 11/09/23 | 27/05/24 | 32 | £626 | N/A | £335 | N/A | Apply |
| P3237LE | SUPPORTING TEACHING & LEARNING (classroom assistant qual) Level 3 Certificate NEW | Lurgan Campus | Wed | 15:00 | 22:00 | 13/09/23 | 05/06/24 | 32 | £422 | £211 | £141 | N/A | Apply |
| P3238NE | SUPPORTING TEACHING & LEARNING (classroom assistant qual) Level 3 Certificate NEW | Newry Campus | Wed | 15:00 | 22:00 | 13/09/23 | 05/06/24 | 32 | £422 | £211 | £141 | N/A | Apply |
| P2423LD | CHILDREN'S CARE LEARNING AND DEVELOPMENT Level 3 Diploma * NEW | Lurgan Campus | Tue | 12:15 | 22:00 | 12/09/23 | 04/06/24 | 32 | £704 | £352 | N/A | N/A | Apply |
| P2424ND | CHILDREN'S CARE LEARNING AND DEVELOPMENT Level 3 Diploma * NEW | Newry Campus | Wed | 12:15 | 22:00 | 13/09/23 | 05/06/24 | 32 | £704 | £352 | N/A | N/A | Apply |
| P2425AD | CHILDREN'S CARE LEARNING AND DEVELOPMENT Level 3 Diploma * NEW | Armagh Campus | Thu | 12:45 | 22:00 | 21/09/23 | 13/06/24 | 32 | £704 | £352 | N/A | N/A | Apply |
| P3429SE | TRANSITION TO PLAYWORK CACHE Level 3 Award NEW FREE Skill UP | eCampus | Mon | 18:30 | 21:45 | 15/01/24 | 15/04/24 | 10 | FREE | FREE | FREE | FREE | Apply |
| P0920BE | CHILDREN & YOUNG PEOPLE WITH BEHAVIOURAL DIFFICULTIES COMMUNICATION NEEDS Level 3 Unit | Banbridge Campus | Tue | 18:30 | 21:45 | 30/01/24 | 23/04/24 | 10 | £66 | £35 | £111 | N/A | Apply |
| P2704SE | WORKING WITH CHILDREN AND YOUNG PEOPLE WITH SPECIAL NEEDS Level 3 Unit NEW FREE Skill UP | eCampus | Wed | 18:30 | 21:45 | 13/09/23 | 22/11/23 | 10 | FREE | FREE | FREE | FREE | Apply |
| P2697SE | WORKING WITH CHILDREN AND YOUNG PEOPLE WITH SPECIAL NEEDS Level 3 Unit NEW FREE Skill UP | eCampus | Wed | 18:30 | 21:45 | 17/01/24 | 10/04/24 | 10 | FREE | FREE | FREE | FREE | Apply |
| P2682SE | UNDERSTANDING HOW TO SUPPORT INDIVIDUALS WITH AUTISTIC SPECTRUM Level 3 Unit NEW FREE Skill UP | eCampus | Mon | 18:30 | 21:45 | 25/09/23 | 04/12/23 | 10 | FREE | FREE | FREE | FREE | Apply |
| P2686SE | UNDERSTANDING HOW TO SUPPORT INDIVIDUALS WITH AUTISTIC SPECTRUM Level 3 Unit NEW FREE Skill UP | eCampus | Mon | 18:30 | 21:45 | 15/01/24 | 15/04/24 | 10 | FREE | FREE | FREE | FREE | Apply |
| P0407AE | CHILDREN'S CARE LEARNING AND DEVELOPMENT Level 2 Diploma * | Armagh Campus | Tue | 15:15 | 22:00 | 19/09/23 | 21/05/24 | 30 | £594 | £297 | £115 | N/A | Apply |
| P0408LE | CHILDREN'S CARE LEARNING AND DEVELOPMENT Level 2 Diploma * | Lurgan Campus | Tue | 15:15 | 22:00 | 19/09/23 | 21/05/24 | 30 | £594 | £297 | £115 | N/A | Apply |
| P0409NE | CHILDREN'S CARE LEARNING AND DEVELOPMENT Level 2 Diploma * | Newry Campus | Tue & Wed | 16:15 | 22:00 | 19/09/23 | 29/05/24 | 30 | £594 | £297 | £115 | N/A | Apply |
| P2687SE | MANAGING CHALLENGING BEHAVIOUR IN CHILDREN AND YOUNG ADULTS Level 2 Award FREE Skill UP | eCampus | Tue | 18:00 | 21:15 | 20/02/24 | 12/03/24 | 10 | FREE | FREE | FREE | FREE | Apply |
| P2408SE | MANAGING CHALLENGING BEHAVIOUR IN CHILDREN AND YOUNG ADULTS Level 2 Award FREE Skill UP | eCampus | Tue | 18:00 | 21:15 | 26/09/23 | 17/10/23 | 10 | FREE | FREE | FREE | FREE | Apply |
| P2405LE | MINDFULNESS IN CHILDREN AND YOUNG PEOPLE Level 2 Unit NEW | Lurgan Campus | Mon | 18:00 | 21:15 | 25/09/23 | 16/10/23 | 4 | TBC | TBC | TBC | N/A | Enrol |
| P3815DE | MINDFULNESS IN CHILDREN AND YOUNG PEOPLE Level 2 Unit NEW | eCampus | Mon | 18:00 | 21:15 | 25/09/23 | 16/10/23 | 4 | £35 | N/A | N/A | N/A | Enrol |
| P2696SE | AUTISTIC SPECTRUM INTRODUCTORY AWARENESS Level 2 Unit NEW FREE Skill UP | eCampus | Thu | 19:00 | 21:30 | 12/10/23 | 07/12/23 | 8 | FREE | FREE | FREE | FREE | Apply |
| P2702SE | AUTISTIC SPECTRUM INTRODUCTORY AWARENESS Level 2 Unit NEW FREE Skill UP | eCampus | Thu | 19:00 | 21:30 | 11/01/24 | 07/03/24 | 8 | FREE | FREE | FREE | FREE | Apply |
| P2412NE | INFANT MENTAL HEALTH Level 1 Award NEW | Newry Campus | Mon | 18:00 | 21:15 | 20/11/23 | 11/12/23 | 4 | £35 | N/A | £30 | N/A | Enrol |
| P2413AP | LIFE AND LIVING SKILLS (ENTRY 3) Entry Level Certificate | Armagh Campus | Mon | 10:00 | 14:30 | 04/09/23 | 20/05/24 | 30 | £264 | £132 | N/A | N/A | Enrol |
| P3814NP | LIFE AND LIVING SKILLS (ENTRY 3) Entry Level Certificate | Newry Campus | Mon | 10:00 | 14:30 | 04/09/23 | 20/05/24 | 30 | £264 | £132 | N/A | N/A | Enrol |
| P2415LP | LIFE AND LIVING SKILLS (ENTRY 3) Entry Level Certificate | Lurgan Campus | Thu | 10:00 | 15:00 | 07/09/23 | 16/05/24 | 30 | £264 | £132 | N/A | N/A | Enrol |
| P2414BP | LIFE AND LIVING SKILLS (ENTRY 3) Entry Level Certificate | Banbridge Campus | Wed | 10:30 | 15:00 | 13/09/23 | 22/05/24 | 30 | £264 | £132 | N/A | N/A | Enrol |
| P3324AP | LIFE AND LIVING SKILLS (ENTRY 3) Entry Level Certificate Top-Up | Armagh Campus | Mon | 10:00 | 14:30 | 11/09/23 | 27/05/24 | 30 | £264 | £132 | N/A | N/A | Enrol |
| P3325BP | LIFE AND LIVING SKILLS (ENTRY 3) Entry Level Certificate Top-Up | Banbridge Campus | Wed | 10:30 | 15:00 | 13/09/23 | 22/05/24 | 30 | £264 | £132 | N/A | N/A | Enrol |
| P3326LP | LIFE AND LIVING SKILLS (ENTRY 3) Entry Level Certificate Top-Up | Lurgan Campus | Thu | 10:00 | 14:30 | 14/09/23 | 23/05/24 | 30 | £264 | £132 | N/A | N/A | Enrol |
| P3577NP | LIFE AND LIVING SKILLS (ENTRY 2) Entry Level Certificate Top-Up | Newry Campus | Mon | 09:15 | 13:30 | 11/09/23 | 03/06/24 | 30 | £264 | £132 | N/A | N/A | Enrol |
| P0943BE | SPECIAL EDUCATIONAL NEEDS PROGRAMME Recreational | Banbridge Campus | Thu | 19:30 | 21:00 | 12/09/23 | 21/11/23 | 10 | £36 | N/A | N/A | N/A | Enrol |
| P0948LE | SPECIAL EDUCATIONAL NEEDS PROGRAMME Recreational | Lurgan Campus | Wed | 19:00 | 21:00 | 13/09/23 | 22/11/23 | 10 | £36 | N/A | N/A | N/A | Enrol |
| P0940AP | SPECIAL EDUCATIONAL NEEDS PROGRAMME Recreational | Armagh Campus | Thu | 10:30 | 14:00 | 14/09/23 | 23/11/23 | 10 | £54 | N/A | N/A | N/A | Enrol |
| P0945BP | SPECIAL EDUCATIONAL NEEDS PROGRAMME Recreational | Banbridge Campus | Thu | 10:30 | 14:00 | 14/09/23 | 23/11/23 | 10 | £54 | N/A | N/A | N/A | Enrol |
| P2007LP | SPECIAL EDUCATIONAL NEEDS PROGRAMME Recreational | Lurgan Campus | Fri | 10:30 | 14:00 | 15/09/23 | 24/11/23 | 10 | £54 | N/A | N/A | N/A | Enrol |
| P0938AE | SPECIAL EDUCATIONAL NEEDS PROGRAMME Recreational | Armagh Campus | Mon | 19:00 | 21:00 | 18/09/23 | 27/11/23 | 10 | £36 | N/A | N/A | N/A | Enrol |
| P0949LE | SPECIAL EDUCATIONAL NEEDS PROGRAMME Recreational | Lurgan Campus | Wed | 19:00 | 21:00 | 06/12/23 | 28/02/24 | 10 | £36 | N/A | N/A | N/A | Enrol |
| P0941AP | SPECIAL EDUCATIONAL NEEDS PROGRAMME Recreational | Armagh Campus | Thu | 10:30 | 14:00 | 07/12/23 | 29/02/24 | 10 | £54 | N/A | N/A | N/A | Enrol |
| P0946BP | SPECIAL EDUCATIONAL NEEDS PROGRAMME Recreational | Banbridge Campus | Thu | 10:30 | 14:00 | 07/12/23 | 29/02/24 | 10 | £54 | N/A | N/A | N/A | Enrol |
| P2008LP | SPECIAL EDUCATIONAL NEEDS PROGRAMME Recreational | Lurgan Campus | Fri | 10:30 | 14:00 | 08/12/23 | 01/03/24 | 10 | £54 | N/A | N/A | N/A | Enrol |
| P0939AE | SPECIAL EDUCATIONAL NEEDS PROGRAMME Recreational | Armagh Campus | Mon | 19:00 | 21:00 | 22/01/24 | 22/04/24 | 10 | £36 | N/A | N/A | N/A | Enrol |
| P0944BE | SPECIAL EDUCATIONAL NEEDS PROGRAMME Recreational | Banbridge Campus | Tue | 19:00 | 21:00 | 23/01/24 | 16/04/24 | 10 | £36 | N/A | N/A | N/A | Enrol |
| P0942AP | SPECIAL EDUCATIONAL NEEDS PROGRAMME Recreational | Armagh Campus | Thu | 10:30 | 14:00 | 21/03/24 | 06/06/24 | 10 | £54 | N/A | N/A | N/A | Enrol |
| P0947BP | SPECIAL EDUCATIONAL NEEDS PROGRAMME Recreational | Banbridge Campus | Thu | 10:30 | 14:00 | 21/03/24 | 06/06/24 | 10 | £54 | N/A | N/A | N/A | Enrol |
| P2009LP | SPECIAL EDUCATIONAL NEEDS PROGRAMME Recreational | Lurgan Campus | Fri | 10:30 | 14:00 | 22/03/24 | 07/06/24 | 10 | £54 | N/A | N/A | N/A | Enrol |

COURSE KEY

* - Year 1 fee only
** - Module fee only
U - Students required to purchase uniform

K - Students required to purchase kit
E - Exams fee payable
L - Licence fee payable

A - Administration fee payable
e-Campus - course delivered fully online or blended learning (% on campus & % online)

| Course Code | Course Title | Location | Day | Start Time | End Time | Start Date | End Date | No. of Wks | Tuition Fee | Concession Fee | Exam/Reg Fee | Materials Fee | Apply/Enrol |
|---|---|------------------------------|-----------|------------|----------|------------|----------|------------|-------------|----------------|--------------|---------------|-------------|
| CHILD CARE & SPECIAL EDUCATIONAL NEEDS - COURSES IN THE COMMUNITY | | | | | | | | | | | | | |
| P2419WE | INTRODUCTORY AWARENESS OF AUTISTIC SPECTRUM CONDITIONS Level 2 Unit NEW | Nautilus Centre, Kilkeel | Mon | 19:00 | 21:30 | 22/01/24 | 18/03/24 | 8 | TBC | TBC | TBC | TBC | Enrol |
| P2418WE | INTRODUCTORY AWARENESS OF AUTISTIC SPECTRUM CONDITIONS Level 2 Unit NEW | Cullyhanna Wald Centre | Mon | 19:00 | 21:30 | 15/01/24 | 11/03/24 | 8 | £44 | £35 | TBC | TBC | Enrol |
| P2420YP | INTRODUCTORY AWARENESS OF AUTISTIC SPECTRUM CONDITIONS Level 2 Unit NEW | Chrysalis Centre, C/Avon | Thu | 09:30 | 13:15 | 12/10/23 | 21/12/23 | 10 | TBC | TBC | TBC | TBC | Enrol |
| P2827WP | INTRODUCTORY AWARENESS OF AUTISTIC SPECTRUM CONDITIONS Level 2 Unit NEW | Crossmaglen Community Centre | Mon | 10:00 | 15:30 | 30/10/23 | 02/11/23 | 1 | TBC | TBC | TBC | TBC | Enrol |
| P1145WE | WORKING WITH CHILDREN & YOUNG PEOPLE WITH SPECIAL NEEDS Level 3 Unit | Cullyhanna Wald Centre | Thu | 18:30 | 21:45 | 25/04/24 | 27/06/24 | 10 | £66 | £35 | £19 | N/A | Enrol |
| COMPUTING, IT & MULTIMEDIA | | | | | | | | | | | | | |
| P3879PD | COMPUTING FOR INDUSTRY BSc (Hons) Level 6 Degree (Top-Up) * NEW | Portadown Campus | Thu | 09:00 | 17:00 | 14/09/23 | 30/05/24 | 32 | £589 | N/A | £565 | N/A | Apply |
| P3875PD | COMPUTING FOR INDUSTRY Level 6 BSc (Hons) Degree (Top-Up) Higher Level Apprenticeship NEW | Portadown Campus | Thu | 09:00 | 17:00 | 14/09/23 | 30/05/24 | 32 | FREE | N/A | N/A | N/A | Apply |
| P3681SE | DATA ANALYTICS Level 5 NEW FREE Skill UP | eCampus | Tue & Thu | 17:45 | 22:00 | 26/09/23 | 23/11/23 | 8 | FREE | FREE | FREE | FREE | Apply |
| P3229PE | PRINCIPLES OF CLOUD COMPUTING Level 5 Certificate * NEW | Portadown Campus | Tue | 18:00 | 21:00 | 06/02/24 | 11/06/24 | 16 | £110 | N/A | £74 | N/A | Apply |
| P3679SE | CYBER SECURITY Level 5 NEW FREE Skill UP | eCampus | Mon & Wed | 17:45 | 22:00 | 22/01/24 | 10/04/24 | 8 | FREE | FREE | FREE | FREE | Apply |
| P2946PD | CLOUD COMPUTING, ANALYTICS AND SECURITY FOR INDUSTRY Level 5 Foundation Degree * NEW | Portadown Campus | Mon | 09:00 | 17:00 | 14/09/23 | 30/05/24 | 32 | £736 | N/A | £565 | N/A | Apply |
| P2947PD | CLOUD COMPUTING, ANALYTICS AND SECURITY FOR INDUSTRY Foundation Degree Higher Level Apprenticeship NEW | Portadown Campus | Mon | 09:00 | 17:00 | 11/09/23 | 31/05/24 | 32 | FREE | N/A | N/A | N/A | Apply |
| P3680SE | DATA ANALYTICS Level 4 NEW FREE Skill UP | eCampus | Wed | 17:45 | 22:00 | 15/11/23 | 22/03/24 | 16 | FREE | FREE | FREE | FREE | Apply |
| P3678SE | CYBER SECURITY Level 4 NEW FREE Skill UP | eCampus | Mon & Wed | 18:45 | 22:00 | 11/09/23 | 17/01/24 | 16 | FREE | FREE | FREE | FREE | Apply |
| P0354PE | CompTIA N+ NETWORKING Level 3 | Portadown Campus | Tue | 18:30 | 21:45 | 03/10/23 | 07/05/24 | 26 | £172 | £86 | N/A | N/A | Apply |
| P0355PE | CompTIA S+ SECURITY Level 3 | Portadown Campus | Tue | 18:30 | 21:45 | 16/01/24 | 28/05/24 | 17 | £112 | £56 | N/A | N/A | Apply |
| P0356PE | CompTIA SERVER+ Level 3 | Portadown Campus | Tue | 18:30 | 21:45 | 03/10/23 | 12/03/24 | 20 | £132 | £66 | N/A | N/A | Apply |
| P3198AE | EXCEL ICDL Modular Advanced Unit Level 3 NEW | Armagh Campus | Mon | 18:30 | 21:45 | 22/01/24 | 15/04/24 | 10 | £66 | £35 | £13 | N/A | Enrol |
| P3193BE | EXCEL ICDL Modular Advanced Unit Level 3 NEW | Banbridge Campus | Tue | 18:30 | 21:45 | 23/01/24 | 16/04/24 | 10 | £66 | £35 | £13 | N/A | Enrol |
| P3196AE | WORD ICDL Modular Advanced Level 3 NEW | Armagh Campus | Mon | 18:30 | 21:45 | 22/01/24 | 04/03/24 | 6 | £40 | £35 | £13 | N/A | Enrol |
| P3190BE | WORD ICDL Modular Advanced Level 3 NEW | Banbridge Campus | Tue | 18:30 | 21:45 | 23/01/24 | 05/03/24 | 6 | £40 | £35 | £13 | N/A | Enrol |
| P3191NE | ICDL IT USER SKILLS Level 2 Certificate NEW | Newry Campus | Wed | 18:30 | 21:45 | 27/09/23 | 05/06/24 | 30 | £198 | £99 | £98 | N/A | Enrol |
| P3231BE | ICDL IT USER SKILLS Level 2 Certificate NEW | Banbridge Campus | Tue | 18:30 | 21:45 | 10/10/23 | 11/06/24 | 30 | £198 | £99 | £102 | N/A | Enrol |
| P0353PE | CompTIA A+ ESSENTIALS and ITT Level 2 | Portadown Campus | Thu | 18:30 | 21:45 | 05/10/23 | 06/06/24 | 30 | £198 | £99 | N/A | N/A | Enrol |
| P3110SE | INTRODUCTION TO CYBER SECURITY Level 2 Certificate NEW FREE Skill UP | eCampus | Mon & Wed | 19:00 | 21:00 | 25/09/23 | 08/11/23 | 6 | FREE | FREE | FREE | FREE | Apply |
| P3111SE | INTRODUCTION TO CYBER SECURITY Level 2 Certificate NEW FREE Skill UP | eCampus | Mon & Wed | 19:00 | 21:00 | 29/01/24 | 13/03/24 | 6 | FREE | FREE | FREE | FREE | Apply |
| P1320NE | INTRODUCTION TO CYBER SECURITY Level 2 Certificate | eCampus | Mon | 19:00 | 21:00 | 22/04/24 | 10/06/24 | 6 | £35 | £35 | £30 | N/A | Enrol |
| P3197AE | EXCEL ICDL Modular Level 2 Unit NEW | Armagh Campus | Mon | 18:30 | 21:45 | 02/10/23 | 13/11/23 | 6 | £40 | £35 | £13 | N/A | Enrol |
| P3192BE | EXCEL ICDL Modular Level 2 Unit NEW | Banbridge Campus | Tue | 18:30 | 21:45 | 03/10/23 | 14/11/23 | 6 | £40 | £35 | £13 | N/A | Enrol |
| P3195AE | WORD ICDL Modular Level 2 Unit NEW | Armagh Campus | Mon | 18:30 | 21:45 | 02/10/23 | 13/11/23 | 6 | £40 | £35 | £13 | N/A | Enrol |
| P3189BE | WORD ICDL Modular Level 2 Unit NEW | Banbridge Campus | Tue | 18:30 | 21:45 | 03/10/23 | 14/11/23 | 6 | £40 | £35 | £13 | N/A | Enrol |
| P0562AE | PHOTOSHOP Adobe Level 2 Unit | eCampus | Mon | 19:00 | 21:00 | 13/11/23 | 11/03/24 | 15 | £66 | £35 | £54 | N/A | Enrol |
| P0564BE | PHOTOSHOP Adobe Level 2 Unit | eCampus | Tue | 15:00 | 17:00 | 14/11/23 | 12/03/24 | 15 | £66 | £35 | £54 | N/A | Enrol |
| P0561LE | PHOTOSHOP Adobe Level 2 Unit | eCampus | Tue | 19:00 | 21:00 | 14/11/23 | 12/03/24 | 15 | £66 | £35 | £54 | N/A | Enrol |
| P0560NE | PHOTOSHOP Adobe Level 2 Unit | eCampus | Mon | 19:00 | 21:00 | 13/11/23 | 11/03/24 | 15 | £66 | £35 | £54 | N/A | Enrol |
| P0563PE | PHOTOSHOP Adobe Level 2 Unit | eCampus | Thu | 19:00 | 21:00 | 16/11/23 | 14/03/24 | 15 | £66 | £35 | £54 | N/A | Enrol |
| P2393DP | INTRODUCTION TO PROGRAMMING USING PYTHON MTA Level 2 Unit (Online) NEW | eCampus | Mon | 15:00 | 17:00 | 25/09/23 | 22/01/24 | 15 | £66 | £35 | £43 | N/A | Enrol |
| P0369NE | ICT SKILLS Entry Level 3 Award | Newry Campus | Tue | 18:30 | 21:45 | 19/09/23 | 09/01/24 | 14 | £92 | £46 | N/A | N/A | Enrol |
| P0368AE | ICT SKILLS Entry Level 3 Award | Armagh Campus | Thu | 18:30 | 21:45 | 21/09/23 | 11/01/24 | 14 | £92 | £46 | N/A | N/A | Enrol |
| P0370PE | ICT SKILLS Entry Level 3 Award | Portadown Campus | Tue | 18:30 | 21:45 | 26/09/23 | 16/01/24 | 14 | £92 | £46 | N/A | N/A | Enrol |
| P3234NE | ICT SKILLS Entry Level 3 Award NEW | Newry Campus | Wed | 18:30 | 21:45 | 24/01/24 | 15/05/24 | 14 | £92 | £46 | £39 | N/A | Enrol |
| P3233AE | ICT SKILLS Entry Level 3 Award NEW | Armagh Campus | Thu | 18:30 | 21:45 | 25/01/24 | 16/05/24 | 14 | £92 | £46 | £39 | N/A | Enrol |
| P3235PE | ICT SKILLS Entry Level 3 Award NEW | Portadown Campus | Thu | 18:30 | 21:45 | 25/01/24 | 16/05/24 | 14 | £92 | £46 | £39 | N/A | Enrol |
| P0507PE | COMPUTING - GET IT Recreational | Portadown Campus | Thu | 19:00 | 21:00 | 21/09/23 | 14/12/23 | 12 | £77 | N/A | N/A | N/A | Enrol |
| COMPUTING, IT & MULTIMEDIA - COURSES IN THE COMMUNITY | | | | | | | | | | | | | |
| P3262YP | ICDL IT USER SKILLS Level 2 Certificate NEW | Chrysalis Centre, C/Avon | Fri | 10:00 | 13:15 | 06/10/23 | 14/06/24 | 30 | £198 | £99 | £102 | N/A | Enrol |

COURSE KEY

- * - Year 1 fee only
- ** - Module fee only
- U - Students required to purchase uniform

- K - Students required to purchase kit
- E - Exams fee payable
- L - Licence fee payable

- A - Administration fee payable
- e-Campus - course delivered fully online or blended learning (% on campus & % online)



CAOIMHE BOYLE

COMPUTING LEVEL 5
FOUNDATION DEGREE
IN SCIENCE
HIGHER LEVEL APPRENTICESHIP

I'm currently completing the Computing Higher Level Apprenticeship (HLA) Foundation Degree at SRC. The HLA option really appealed to me as I'm getting paid work, whilst obtaining a degree qualification, and I'll have no student debt as course fees are fully funded. I am currently living and working in Sydney (whilst also studying!).

Without the HLA programme I wouldn't be doing any of these things! However, it does come with challenges, especially the time zone difference (attending College classes online at 2am), but I'm motivated to be successful! For anyone considering the HLA route my advice for you would be: "If you want to progress – go for it! There will be ups and downs but if that's your end goal, push through!



GEMMA BURNS

FOUNDATION DEGREE
IN COMPUTING
(PART-TIME ROUTE)

I originally worked in retail for 12 years before applying for the part-time foundation degree in Computing after having my son. Studying part time and only having to attend College one day a week enabled me the flexibility to be a stay-at-home mum, but also achieve a degree!

I enjoyed studying at the College because the lecturers were extremely helpful and provided a supportive environment. I was given plenty of resources and tools which made things a lot easier returning to education. I was lucky to

be offered a placement within the College's IT department and gained lots of skills, experience, and opportunities. I loved my placement, and this is what made me apply to work in the College on completion of the degree.

My educational experience at the College has been extremely beneficial. I would not be in my current role at the College without it. As a working mum, I am so thankful for the flexible environment that the College provides both as a student and as a staff member.

| Course Code | Course Title | Location | Day | Start Time | End Time | Start Date | End Date | No. of Wks | Tuition Fee | Concession Fee | Exam/Reg Fee | Materials Fee | Apply/Enrol |
|-------------------|---|------------------|-----------|------------|----------|------------|----------|------------|-------------|----------------|--------------|---------------|-------------|
| CONSTRUCTION | | | | | | | | | | | | | |
| P3690ND | CONSTRUCTION BSc (Hons) Level 6 Degree (Top-Up) NEW * | Newry Campus | Tue | 09:00 | 18:15 | 12/09/23 | 28/05/24 | 30 | £552 | N/A | £565 | N/A | Apply |
| P3693ND | CONSTRUCTION (DIGITAL CONSTRUCTION MANAGEMENT) Level 5 Foundation Degree Higher Level Apprenticeship NEW | Newry Campus | Wed | 09:00 | 22:00 | 13/09/23 | 29/05/24 | 32 | FREE | N/A | N/A | N/A | Apply |
| P3857ND | CONSTRUCTION (QUANTITY SURVEYING) Level 5 Foundation Degree Higher Level Apprenticeship NEW | Newry Campus | Wed | 09:00 | 22:00 | 13/09/23 | 29/05/24 | 32 | FREE | N/A | N/A | N/A | Apply |
| P3858ND | CONSTRUCTION (QUANTITY SURVEYING) Level 5 Foundation Degree NEW * | Newry Campus | Wed | 09:00 | 22:00 | 13/09/23 | 29/05/24 | 32 | £810 | N/A | £565 | N/A | Apply |
| P2604NE | 3D BUILDING MODELLING USING REVIT Level 4 Certificate NEW | Newry Campus | Tue | 18:00 | 21:15 | 12/09/23 | 05/12/23 | 12 | £83 | N/A | £82 | N/A | Apply |
| P2605NE | 3D BUILDING MODELLING USING REVIT Level 4 Certificate NEW | Newry Campus | Tue | 18:00 | 21:15 | 23/01/24 | 30/04/24 | 12 | £83 | N/A | £82 | N/A | Apply |
| P2603NE | COLLABORATION IN BUILDING INFORMATION, MODELLING/MANAGEMENT Level 4 Certificate NEW | Newry Campus | Tue | 18:00 | 21:15 | 12/09/23 | 14/05/24 | 30 | £207 | N/A | £82 | N/A | Apply |
| P0034PE | CONSTRUCTION AND THE BUILT ENVIRONMENT - CONSTRUCTION Level 4 Higher National Certificate * | Portadown Campus | Tue & Thu | 17:15 | 22:00 | 12/09/23 | 30/05/24 | 32 | £626 | N/A | £246 | N/A | Apply |
| P0734NE | COMPUTER AIDED DESIGN 2D Level 3 Award | Newry Campus | Wed | 18:30 | 21:45 | 20/09/23 | 22/05/24 | 30 | £198 | £99 | £106 | N/A | Enrol |
| P0735PE | COMPUTER AIDED DESIGN 2D Level 3 Award | Portadown Campus | Tue | 18:30 | 21:45 | 19/09/23 | 21/05/24 | 30 | £198 | £99 | £106 | N/A | Enrol |
| P3017GD | DOMESTIC PLUMBING AND HEATING Level 3 NVQ Diploma NEW | Greenbank Campus | Tue | 09:00 | 16:30 | 04/09/23 | 21/06/24 | 36 | £535 | £268 | £224 | £100 | Apply |
| P0504PD | CONSTRUCTION AND THE BUILT ENVIRONMENT Level 3 National Diploma * | Portadown Campus | Tue | 09:00 | 19:30 | 05/09/23 | 21/05/24 | 32 | £669 | £335 | £222 | N/A | Apply |
| P3171NP | CONSTRUCTION AND THE BUILT ENVIRONMENT Level 3 Diploma NEW | Newry Campus | Wed | 09:15 | 19:30 | 13/09/23 | 12/06/24 | 34 | £673 | £337 | £222 | N/A | Apply |
| P2372PD | CIVIL ENGINEERING Level 3 National Diploma NEW * | Portadown Campus | Tue | 09:00 | 19:30 | 05/09/23 | 04/06/24 | 34 | £711 | £356 | £222 | N/A | Apply |
| P0732NE | COMPUTER AIDED DESIGN 2D Level 2 Award | Newry Campus | Wed | 18:30 | 21:45 | 20/09/23 | 28/02/24 | 20 | £132 | £66 | £106 | N/A | Enrol |
| P0733PE | COMPUTER AIDED DESIGN 2D Level 2 Award | Portadown Campus | Tue | 18:30 | 21:45 | 19/09/23 | 27/02/24 | 20 | £132 | £66 | £106 | N/A | Enrol |
| P3170NE | CONSTRUCTION AND THE BUILT ENVIRONMENT Level 1/2 First Award NEW | Newry Campus | Tue | 18:00 | 21:15 | 12/09/23 | 11/06/24 | 34 | £224 | £112 | £70 | N/A | Enrol |
| P3172PE | CONSTRUCTION AND THE BUILT ENVIRONMENT Level 1/2 First Award NEW | Portadown Campus | Thu | 18:00 | 21:15 | 14/09/23 | 13/06/24 | 34 | £224 | £112 | £70 | N/A | Enrol |
| P0794PE | HOBBY TRADES - PLUMBING Recreational | Portadown Campus | Tue | 19:00 | 21:30 | 06/02/24 | 14/05/24 | 12 | £96 | N/A | N/A | N/A | Enrol |
| COUNSELLING | | | | | | | | | | | | | |
| P0061ND | INTEGRATIVE COUNSELLING Level 5 Foundation Degree * | Newry Campus | Wed | 09:30 | 21:00 | 13/09/23 | 29/05/24 | 32 | £736 | N/A | £346 | N/A | Apply |
| P0041BE | COUNSELLING STUDIES Level 4 Certificate * | Banbridge Campus | Tue | 18:00 | 22:00 | 12/09/23 | 28/05/24 | 32 | £368 | N/A | £346 | N/A | Apply |
| P0042NE | COUNSELLING STUDIES Level 4 Certificate * | Newry Campus | Tue | 16:30 | 22:00 | 12/09/23 | 28/05/24 | 32 | £368 | N/A | £346 | N/A | Apply |
| P0043NP | COUNSELLING STUDIES Level 4 Certificate * | Newry Campus | Thu | 09:00 | 13:15 | 14/09/23 | 30/05/24 | 32 | £368 | N/A | £346 | N/A | Apply |
| P3946BE | INTRODUCTION TO COUNSELLING SKILLS Level 2 Award NEW | Banbridge Campus | Tue | 18:45 | 22:00 | 19/09/23 | 28/11/23 | 10 | £66 | £35 | £58 | N/A | Enrol |
| P3947NE | INTRODUCTION TO COUNSELLING SKILLS Level 2 Award NEW | Newry Campus | Wed | 18:45 | 22:00 | 20/09/23 | 29/11/23 | 10 | £66 | £35 | £58 | N/A | Enrol |
| P3948AE | INTRODUCTION TO COUNSELLING SKILLS Level 2 Award NEW | Armagh Campus | Thu | 18:45 | 22:00 | 21/09/23 | 30/11/23 | 10 | £66 | £35 | £58 | N/A | Enrol |
| P3949BE | INTRODUCTION TO COUNSELLING SKILLS Level 2 Award NEW | Banbridge Campus | Tue | 18:45 | 22:00 | 16/01/24 | 09/04/24 | 10 | £66 | £35 | £58 | N/A | Enrol |
| P3950NE | INTRODUCTION TO COUNSELLING SKILLS Level 2 Award NEW | Newry Campus | Wed | 18:45 | 22:00 | 17/01/24 | 10/04/24 | 10 | £66 | £35 | £58 | N/A | Enrol |
| DENTAL NURSING | | | | | | | | | | | | | |
| P0425PE | DENTAL NURSING Level 3 National Diploma * | Portadown Campus | Tue | 15:00 | 21:15 | 19/09/23 | 04/06/24 | 32 | £630 | N/A | £510 | N/A | Apply |
| P0424NE | DENTAL NURSING Level 3 National Diploma * | Newry Campus | Wed | 15:00 | 21:15 | 20/09/23 | 05/06/24 | 32 | £630 | N/A | £510 | N/A | Apply |
| ENGINEERING | | | | | | | | | | | | | |
| P3049ND | ENGINEERING BEng (Hons) Level 6 Degree (Top-Up) * NEW | Newry Campus | Tue | 09:00 | 18:15 | 12/09/23 | 14/05/24 | 30 | £552 | N/A | £565 | N/A | Apply |
| P3707ND | ENGINEERING BEng (Hons) Level 6 Degree (Top-Up) Higher Level Apprenticeship NEW | Newry Campus | Tue | 9:00 | 17:00 | 12/09/23 | 14/05/24 | 30 | FREE | N/A | N/A | N/A | Apply |
| P3692ND | ENGINEERING (ELECTRICAL & ELECTRONIC) Level 5 Foundation Degree * NEW | Newry Campus | Tue | 09:15 | 21:00 | 12/09/23 | 28/05/24 | 32 | £810 | N/A | £565 | N/A | Apply |
| P3691ND | ENGINEERING (ELECTRICAL & ELECTRONIC) Level 5 Foundation Degree Higher Level Apprenticeship NEW | Newry Campus | Tue | 09:15 | 21:00 | 12/09/23 | 28/05/24 | 32 | FREE | N/A | N/A | N/A | Apply |
| P3689PD | ENGINEERING (MECHATRONICS) Level 5 Foundation Degree * NEW | Portadown Campus | Tue | 09:15 | 21:00 | 12/09/23 | 28/05/24 | 32 | £810 | N/A | £565 | N/A | Apply |
| P3688PD | ENGINEERING (MECHATRONICS) Level 5 Foundation Degree Higher Level Apprenticeship NEW | Portadown Campus | Tue | 09:15 | 21:00 | 12/09/23 | 28/05/24 | 32 | FREE | N/A | N/A | N/A | Apply |
| P3048ND | ENGINEERING (TECHNICAL DESIGN & MANUFACTURE) Level 5 Foundation Degree * NEW | Newry Campus | Tue | 09:15 | 21:00 | 12/09/23 | 28/05/24 | 32 | £810 | N/A | £565 | N/A | Apply |
| P3037ND | ENGINEERING (TECHNICAL DESIGN & MANUFACTURE) Level 5 Foundation Degree Higher Level Apprenticeship NEW | Newry Campus | Tue | 09:15 | 21:00 | 12/09/23 | 28/05/24 | 32 | FREE | N/A | N/A | N/A | Apply |
| P2701SE | PNEUMATIC AND HYDRAULIC SYSTEMS Level 3 Unit NEW FREE Skill UP | Newry Campus | Wed | 17:45 | 22:00 | 10/01/24 | 17/04/24 | 12 | FREE | FREE | FREE | FREE | Apply |
| P2676SE | MANUFACTURING COMPUTER NUMERICAL CONTROL MACHINING PROCESSES Level 3 Unit NEW FREE Skill UP | Portadown Campus | Thu | 17:45 | 22:00 | 28/09/23 | 21/12/23 | 12 | FREE | FREE | FREE | FREE | Apply |
| P2699SE | MANUFACTURING COMPUTER NUMERICAL CONTROL MACHINING PROCESSES Level 3 Unit NEW FREE Skill UP | Portadown Campus | Thu | 17:45 | 22:00 | 11/01/24 | 18/04/24 | 12 | FREE | FREE | FREE | FREE | Apply |
| P2679SE | PNEUMATIC AND HYDRAULIC SYSTEMS Level 3 Unit NEW FREE Skill UP | Newry Campus | Wed | 17:45 | 22:00 | 20/09/23 | 13/12/23 | 12 | FREE | FREE | FREE | FREE | Apply |
| P2675SE | PROGRAMMABLE LOGIC CONTROLLERS Level 3 Unit NEW FREE Skill UP | Newry Campus | Tue | 17:45 | 22:00 | 19/09/23 | 12/12/23 | 12 | FREE | FREE | FREE | FREE | Apply |
| P2698SE | PROGRAMMABLE LOGIC CONTROLLERS Level 3 Unit NEW FREE Skill UP | Portadown Campus | Tue | 17:45 | 22:00 | 09/01/24 | 16/04/24 | 12 | FREE | FREE | FREE | FREE | Apply |
| P1280AE | INTRODUCTORY WELDING SKILLS Level 1 Award | Armagh Campus | Thu | 18:45 | 22:00 | 05/10/23 | 14/03/24 | 20 | £132 | £66 | £100 | £100 | Enrol |
| P0731PE | INTRODUCTORY WELDING SKILLS Level 1 Award | Portadown Campus | Tue | 18:45 | 22:00 | 03/10/23 | 12/03/24 | 20 | £132 | £66 | £100 | £100 | Enrol |
| ENGLISH & HISTORY | | | | | | | | | | | | | |
| P0104ND | ENGLISH AND HISTORY BA Level 6 Degree * | Newry Campus | Mon | 09:00 | 17:15 | 11/09/23 | 27/05/24 | 32 | £515 | N/A | N/A | N/A | Apply |

COURSE KEY

- * - Year 1 fee only
- ** - Module fee only
- U - Students required to purchase uniform

- K - Students required to purchase kit
- E - Exams fee payable
- L - Licence fee payable

- A - Administration fee payable
- e-Campus - course delivered fully online or blended learning (% on campus & % online)



ALEX MCNEICE

ENGINEERING (MECHATRONICS) LEVEL 5 FOUNDATION DEGREE
HIGHER LEVEL APPRENTICESHIP

I completed the Mechtronics Higher Level Apprenticeship (HLA) last year and am now undertaking the Engineering BEng (Hons) Level 6 Degree (Top-Up). The HLA was thoroughly enjoyable as I gained a broad understanding of the world of engineering, plus now have a vast array of career options!

The HLA is hugely beneficial, I took part in WorldSkills competitions and am streets ahead of university graduates in terms of real work experience and knowledge.

| Course Code | Course Title | Location | Day | Start Time | End Time | Start Date | End Date | No. of Wks | Tuition Fee | Concession Fee | Exam/Reg Fee | Materials Fee | Apply/Enrol |
|--|--|------------------|-----|------------|----------|------------|------------|------------|-------------|----------------|--------------|---------------|-------------|
| ENGLISH FOR SPEAKERS OF OTHER LANGUAGES (ESOL) | | | | | | | | | | | | | |
| P0881NE | ESOL SKILLS FOR LIFE (READING) Level 2 Award | Newry Campus | Mon | 18:15 | 21:30 | 18/09/2023 | 27/11/2023 | 10 | £55 | £35 | £18 | N/A | Apply |
| P0882PE | ESOL SKILLS FOR LIFE (READING) Level 2 Award | Portadown Campus | Thu | 18:30 | 21:45 | 21/09/2023 | 30/11/2023 | 10 | £55 | £35 | £18 | N/A | Apply |
| P0883PP | ESOL SKILLS FOR LIFE (READING) Level 2 Award | Portadown Campus | Fri | 09:30 | 12:45 | 22/09/2023 | 01/12/2023 | 10 | £55 | £35 | £18 | N/A | Apply |
| P0884NE | ESOL SKILLS FOR LIFE (SPEAKING AND LISTENING) Level 2 Award | Newry Campus | Mon | 18:00 | 21:45 | 04/03/2024 | 10/06/2024 | 10 | £55 | £35 | £18 | N/A | Apply |
| P0885PE | ESOL SKILLS FOR LIFE (SPEAKING AND LISTENING) Level 2 Award | Portadown Campus | Thu | 18:30 | 21:45 | 07/03/2024 | 23/05/2024 | 10 | £55 | £35 | £18 | N/A | Apply |
| P0886PP | ESOL SKILLS FOR LIFE (SPEAKING AND LISTENING) Level 2 Award | Portadown Campus | Thu | 09:30 | 12:45 | 07/03/2024 | 23/05/2024 | 10 | £55 | £35 | £18 | N/A | Apply |
| P0887NE | ESOL SKILLS FOR LIFE (WRITING) Level 2 Award | Newry Campus | Mon | 18:15 | 21:30 | 04/12/2023 | 26/02/2024 | 10 | £55 | £35 | £18 | N/A | Apply |
| P0888PE | ESOL SKILLS FOR LIFE (WRITING) Level 2 Award | Portadown Campus | Thu | 18:30 | 21:45 | 07/12/2023 | 29/02/2024 | 10 | £55 | £35 | £18 | N/A | Apply |
| P0889PP | ESOL SKILLS FOR LIFE (WRITING) Level 2 Award | Portadown Campus | Thu | 09:30 | 12:45 | 07/12/2023 | 29/03/2024 | 10 | £55 | £35 | £18 | N/A | Apply |
| P0869NE | ESOL SKILLS FOR LIFE (READING) Level 1 Award | Newry Campus | Wed | 18:15 | 21:30 | 20/09/2023 | 29/11/2023 | 10 | £55 | £35 | £18 | N/A | Apply |
| P0870PE | ESOL SKILLS FOR LIFE (READING) Level 1 Award | Portadown Campus | Tue | 18:15 | 21:30 | 19/09/2023 | 28/11/2023 | 10 | £55 | £35 | £18 | N/A | Apply |
| P0871PP | ESOL SKILLS FOR LIFE (READING) Level 1 Award | Portadown Campus | Wed | 09:30 | 12:45 | 20/09/2023 | 29/11/2023 | 10 | £55 | £35 | £18 | N/A | Apply |
| P0873NE | ESOL SKILLS FOR LIFE (SPEAKING AND LISTENING) Level 1 Award | Newry Campus | Wed | 18:15 | 21:30 | 06/03/2024 | 22/05/2024 | 10 | £55 | £35 | £18 | N/A | Apply |
| P0875PP | ESOL SKILLS FOR LIFE (SPEAKING AND LISTENING) Level 1 Award | Portadown Campus | Wed | 09:30 | 12:45 | 06/03/2024 | 22/05/2024 | 10 | £55 | £35 | £18 | N/A | Apply |
| P0874PE | ESOL SKILLS FOR LIFE (SPEAKING AND LISTENING) Level 1 Award | Portadown Campus | Tue | 18:15 | 21:30 | 12/03/2024 | 28/05/2024 | 10 | £55 | £35 | £18 | N/A | Apply |
| P0878PE | ESOL SKILLS FOR LIFE (WRITING) Level 1 Award | Portadown Campus | Tue | 18:15 | 21:30 | 05/12/2023 | 27/02/2024 | 10 | £55 | £35 | £18 | N/A | Apply |
| P0877NE | ESOL SKILLS FOR LIFE (WRITING) Level 1 Award | Newry Campus | Wed | 18:15 | 21:30 | 06/12/2023 | 28/02/2024 | 10 | £55 | £35 | £18 | N/A | Apply |
| P0879PP | ESOL SKILLS FOR LIFE (WRITING) Level 1 Award | Portadown Campus | Wed | 09:30 | 12:45 | 06/12/2023 | 28/02/2024 | 10 | £55 | £35 | £18 | N/A | Apply |
| P0839PE | ESOL SKILLS FOR LIFE (READING)(ENTRY 3) Entry Level Award | Portadown Campus | Tue | 19:00 | 21:00 | 19/09/2023 | 28/11/2023 | 10 | £55 | £35 | £18 | N/A | Apply |
| P0840PP | ESOL SKILLS FOR LIFE (READING)(ENTRY 3) Entry Level Award | Portadown Campus | Tue | 11:45 | 13:45 | 19/09/2023 | 28/11/2023 | 10 | £55 | £35 | £18 | N/A | Apply |
| P0838NE | ESOL SKILLS FOR LIFE (READING)(ENTRY 3) Entry Level Award | Newry Campus | Wed | 19:00 | 21:00 | 20/09/2023 | 29/11/2023 | 10 | £55 | £35 | £18 | N/A | Apply |
| P0854PP | ESOL SKILLS FOR LIFE (SPEAKING AND LISTENING)(ENTRY 3) Entry Level Award | Portadown Campus | Tue | 11:45 | 13:45 | 05/03/2024 | 21/05/2024 | 10 | £55 | £35 | £18 | N/A | Apply |
| P0852NE | ESOL SKILLS FOR LIFE (SPEAKING AND LISTENING)(ENTRY 3) Entry Level Award | Newry Campus | Wed | 19:00 | 21:00 | 06/03/2024 | 22/05/2024 | 10 | £55 | £35 | £18 | N/A | Apply |
| P0853PE | ESOL SKILLS FOR LIFE (SPEAKING AND LISTENING)(ENTRY 3) Entry Level Award | Portadown Campus | Tue | 19:00 | 21:00 | 05/03/2024 | 21/05/2024 | 10 | £55 | £35 | £18 | N/A | Apply |
| P0867PE | ESOL SKILLS FOR LIFE (WRITING)(ENTRY 3) Entry Level Award | Portadown Campus | Tue | 19:00 | 21:00 | 05/12/2023 | 27/02/2024 | 10 | £55 | £35 | £18 | N/A | Apply |
| P0868PP | ESOL SKILLS FOR LIFE (WRITING)(ENTRY 3) Entry Level Award | Portadown Campus | Tue | 11:45 | 13:45 | 05/12/2023 | 27/03/2024 | 10 | £55 | £35 | £18 | N/A | Apply |
| P0866NE | ESOL SKILLS FOR LIFE (WRITING)(ENTRY 3) Entry Level Award | Newry Campus | Wed | 19:00 | 21:00 | 06/12/2023 | 28/02/2024 | 10 | £55 | £35 | £18 | N/A | Apply |
| P0834NE | ESOL SKILLS FOR LIFE (READING)(ENTRY 2) Entry Level Award | Newry Campus | Tue | 19:00 | 21:00 | 19/09/2023 | 28/11/2023 | 10 | £55 | £35 | £18 | N/A | Apply |
| P0836PP | ESOL SKILLS FOR LIFE (READING)(ENTRY 2) Entry Level Award | Portadown Campus | Tue | 09:30 | 11:30 | 19/09/2023 | 28/11/2023 | 10 | £55 | £35 | £18 | N/A | Apply |
| P0835PE | ESOL SKILLS FOR LIFE (READING)(ENTRY 2) Entry Level Award | Portadown Campus | Thu | 19:00 | 21:00 | 21/09/2023 | 30/11/2023 | 10 | £55 | £35 | £18 | N/A | Apply |
| P0848NE | ESOL SKILLS FOR LIFE (SPEAKING AND LISTENING)(ENTRY 2) Entry Level Award | Newry Campus | Tue | 19:00 | 21:00 | 05/03/2024 | 21/05/2024 | 10 | £55 | £35 | £18 | N/A | Apply |
| P0850PP | ESOL SKILLS FOR LIFE (SPEAKING AND LISTENING)(ENTRY 2) Entry Level Award | Portadown Campus | Tue | 09:30 | 11:30 | 05/03/2024 | 21/05/2024 | 10 | £55 | £35 | £18 | N/A | Apply |
| P0849PE | ESOL SKILLS FOR LIFE (SPEAKING AND LISTENING)(ENTRY 2) Entry Level Award | Portadown Campus | Thu | 19:00 | 21:00 | 21/03/2024 | 06/06/2024 | 10 | £55 | £35 | £18 | N/A | Apply |
| P0862NE | ESOL SKILLS FOR LIFE (WRITING)(ENTRY 2) Entry Level Award | Newry Campus | Tue | 19:00 | 21:00 | 05/12/2023 | 27/02/2024 | 10 | £55 | £35 | £18 | N/A | Apply |
| P0864PP | ESOL SKILLS FOR LIFE (WRITING)(ENTRY 2) Entry Level Award | Portadown Campus | Tue | 09:30 | 11:30 | 05/12/2023 | 27/02/2024 | 10 | £55 | £35 | £18 | N/A | Apply |
| P0863PE | ESOL SKILLS FOR LIFE (WRITING)(ENTRY 2) Entry Level Award | Portadown Campus | Thu | 19:00 | 21:00 | 07/12/2023 | 29/02/2024 | 10 | £55 | £35 | £18 | N/A | Apply |
| P0829NE | ESOL SKILLS FOR LIFE (READING)(ENTRY 1) Entry Level Award | Newry Campus | Mon | 19:00 | 21:00 | 18/09/2023 | 27/11/2023 | 10 | £55 | £35 | £18 | N/A | Apply |
| P0831PP | ESOL SKILLS FOR LIFE (READING)(ENTRY 1) Entry Level Award | Portadown Campus | Mon | 09:30 | 11:30 | 18/09/2023 | 27/11/2023 | 10 | £55 | £35 | £18 | N/A | Apply |
| P0830PE | ESOL SKILLS FOR LIFE (READING)(ENTRY 1) Entry Level Award | Portadown Campus | Tue | 19:00 | 21:00 | 19/09/2023 | 28/11/2023 | 10 | £55 | £35 | £18 | N/A | Apply |
| P0843NE | ESOL SKILLS FOR LIFE (SPEAKING AND LISTENING)(ENTRY 1) Entry Level Award | Newry Campus | Mon | 19:00 | 21:00 | 04/03/2024 | 20/05/2024 | 8 | £55 | £35 | £18 | N/A | Apply |
| P0844PE | ESOL SKILLS FOR LIFE (SPEAKING AND LISTENING)(ENTRY 1) Entry Level Award | Portadown Campus | Mon | 19:00 | 21:00 | 04/03/2024 | 26/05/2024 | 10 | £55 | £35 | £18 | N/A | Apply |
| P0845PP | ESOL SKILLS FOR LIFE (SPEAKING AND LISTENING)(ENTRY 1) Entry Level Award | Portadown Campus | Mon | 09:30 | 11:30 | 04/03/2024 | 10/06/2024 | 10 | £55 | £35 | £18 | N/A | Apply |
| P0857NE | ESOL SKILLS FOR LIFE (WRITING)(ENTRY 1) Entry Level Award | Newry Campus | Mon | 19:00 | 21:00 | 04/12/2023 | 26/02/2024 | 10 | £55 | £35 | £18 | N/A | Apply |
| P0859PP | ESOL SKILLS FOR LIFE (WRITING)(ENTRY 1) Entry Level Award | Portadown Campus | Mon | 09:30 | 11:30 | 04/12/2023 | 26/02/2024 | 10 | £55 | £35 | £18 | N/A | Apply |
| P0858PE | ESOL SKILLS FOR LIFE (WRITING)(ENTRY 1) Entry Level Award | Portadown Campus | Tue | 19:00 | 21:00 | 05/12/2023 | 27/02/2024 | 10 | £55 | £35 | £18 | N/A | Apply |
| P0907PP | ESOL CONVERSATION Recreational | Portadown Campus | Mon | 11:30 | 13:00 | 25/09/2023 | 04/12/2023 | 10 | £48 | N/A | N/A | N/A | Enrol |
| P0908PP | ESOL CONVERSATION Recreational | Portadown Campus | Mon | 11:30 | 13:00 | 11/12/2023 | 04/03/2024 | 10 | £48 | N/A | N/A | N/A | Enrol |
| P0909PP | ESOL CONVERSATION Recreational | Portadown Campus | Mon | 11:30 | 13:00 | 11/03/2024 | 17/06/2024 | 10 | £48 | N/A | N/A | N/A | Enrol |

COURSE KEY

- * - Year 1 fee only
- ** - Module fee only
- U - Students required to purchase uniform

- K - Students required to purchase kit
- E - Exams fee payable
- L - Licence fee payable

- A - Administration fee payable
- e-Campus - course delivered fully online or blended learning (% on campus & % online)

JACQUI HAWTHORNE

PAINTING AND DECORATING

LEVEL 3 DIPLOMA APPRENTICESHIP

During lockdown I began painting my sister's house and painting some furniture. This led me to think about an apprenticeship in painting and decorating, where I could earn and learn. There is so much more to painting and decorating than what you are led to believe, from learning about principles of building construction, preparing surfaces to producing specialist finishes for decorative work.

The apprenticeship is really great as it allows me to be in employment four days a week earning money and learning one day a week in College. There are so many

opportunities for progression whether it's starting out on my own or continuing in education, expanding my knowledge in specialised fields of painting or decorating.

This apprenticeship has provided me with opportunities to compete in multiple competitions, namely the WorldSkills UK competition, where I won a bronze medal. For anyone thinking of taking up a new career path, my advice would be to be committed and have an interest in what you are doing. That way you'll get more out of your course, which will help you advance in your career path.



| Course Code | Course Title | Location | Day | Start Time | End Time | Start Date | End Date | No. of Wks | Tuition Fee | Concession Fee | Exam/Reg Fee | Materials Fee | Apply/Enrol |
|---|--|-------------------------------|-----|------------|----------|------------|----------|------------|-------------|----------------|--------------|---------------|-------------|
| ESSENTIAL SKILLS | | | | | | | | | | | | | |
| P3335PP | ESSENTIAL SKILLS - COMMUNICATION Level 2 Certificate | Portadown Campus | Tue | 09:30 | 12:45 | 12/09/23 | 16/01/24 | 16 | FREE | FREE | FREE | FREE | Enrol |
| P0930LE | ESSENTIAL SKILLS - COMMUNICATION Level 2 Certificate | Lurgan Campus | Wed | 18:30 | 21:45 | 13/09/23 | 24/01/24 | 16 | FREE | FREE | FREE | FREE | Enrol |
| P0936PE | ESSENTIAL SKILLS - COMMUNICATION Level 2 Certificate | Portadown Campus | Thu | 18:30 | 21:45 | 14/09/23 | 18/01/24 | 16 | FREE | FREE | FREE | FREE | Enrol |
| P0934NP | ESSENTIAL SKILLS - COMMUNICATION Level 2 Certificate | Newry Campus | Fri | 09:15 | 12:30 | 15/09/23 | 19/01/24 | 16 | FREE | FREE | FREE | FREE | Enrol |
| P3605DE | ESSENTIAL SKILLS - COMMUNICATION Level 2 Certificate NEW | eCampus | Wed | 18:30 | 21:45 | 20/09/23 | 24/01/24 | 16 | FREE | FREE | FREE | FREE | Enrol |
| P0932NE | ESSENTIAL SKILLS - COMMUNICATION Level 2 Certificate | Newry Campus | Wed | 18:30 | 21:45 | 20/09/23 | 24/01/24 | 16 | FREE | FREE | FREE | FREE | Enrol |
| P3336DP | ESSENTIAL SKILLS - COMMUNICATION Level 2 Certificate NEW | eCampus | Thu | 09:30 | 12:45 | 21/09/23 | 25/01/24 | 16 | FREE | FREE | FREE | FREE | Enrol |
| P3333AP | ESSENTIAL SKILLS - COMMUNICATION Level 2 Certificate | Armagh Campus | Fri | 09:30 | 12:45 | 19/01/24 | 24/05/24 | 16 | FREE | FREE | FREE | FREE | Enrol |
| P0937PE | ESSENTIAL SKILLS - COMMUNICATION Level 2 Certificate | Portadown Campus | Tue | 18:30 | 21:45 | 23/01/24 | 28/05/24 | 16 | FREE | FREE | FREE | FREE | Enrol |
| P3337AP | ESSENTIAL SKILLS - COMMUNICATION Level 2 Certificate NEW | Armagh Campus | Tue | 09:30 | 12:45 | 23/01/24 | 28/05/24 | 16 | FREE | FREE | FREE | FREE | Enrol |
| P3338PP | ESSENTIAL SKILLS - COMMUNICATION Level 2 Certificate | Portadown Campus | Tue | 09:30 | 12:45 | 23/01/24 | 28/05/24 | 16 | FREE | FREE | FREE | FREE | Enrol |
| P0935NP | ESSENTIAL SKILLS - COMMUNICATION Level 2 Certificate | Newry Campus | Fri | 09:15 | 12:30 | 26/01/24 | 31/05/24 | 16 | FREE | FREE | FREE | FREE | Enrol |
| P0931LE | ESSENTIAL SKILLS - COMMUNICATION Level 2 Certificate | Lurgan Campus | Wed | 18:30 | 21:45 | 31/01/24 | 05/06/24 | 16 | FREE | FREE | FREE | FREE | Enrol |
| P0933NE | ESSENTIAL SKILLS - COMMUNICATION Level 2 Certificate | Newry Campus | Wed | 18:30 | 21:45 | 31/01/24 | 05/06/24 | 16 | FREE | FREE | FREE | FREE | Enrol |
| P3339DP | ESSENTIAL SKILLS - COMMUNICATION Level 2 Certificate NEW | eCampus | Thu | 09:30 | 12:45 | 01/02/24 | 06/06/24 | 16 | FREE | FREE | FREE | FREE | Enrol |
| P3606DE | ESSENTIAL SKILLS - COMMUNICATION Level 2 Certificate NEW | eCampus | Wed | 18:30 | 21:45 | 07/02/24 | 12/06/24 | 16 | FREE | FREE | FREE | FREE | Enrol |
| P0752AE | ESSENTIAL SKILLS - APPLICATION OF NUMBER Level 2 Certificate | Armagh Campus | Mon | 18:30 | 21:45 | 18/09/23 | 22/01/24 | 16 | FREE | FREE | FREE | FREE | Enrol |
| P0758LE | ESSENTIAL SKILLS - APPLICATION OF NUMBER Level 2 Certificate | Lurgan Campus | Tue | 18:30 | 21:45 | 19/09/23 | 23/01/24 | 16 | FREE | FREE | FREE | FREE | Enrol |
| P0761NE | ESSENTIAL SKILLS - APPLICATION OF NUMBER Level 2 Certificate | Newry Campus | Tue | 18:30 | 21:45 | 19/09/23 | 23/01/24 | 16 | FREE | FREE | FREE | FREE | Enrol |
| P0754BE | ESSENTIAL SKILLS - APPLICATION OF NUMBER Level 2 Certificate | Banbridge Campus | Thu | 18:30 | 21:45 | 28/09/23 | 01/02/24 | 16 | FREE | FREE | FREE | FREE | Enrol |
| P0767PE | ESSENTIAL SKILLS - APPLICATION OF NUMBER Level 2 Certificate | Portadown Campus | Thu | 18:30 | 21:45 | 28/09/23 | 01/02/24 | 16 | FREE | FREE | FREE | FREE | Enrol |
| P0763NP | ESSENTIAL SKILLS - APPLICATION OF NUMBER Level 2 Certificate | Newry Campus | Fri | 13:30 | 16:45 | 29/09/23 | 09/02/24 | 16 | FREE | FREE | FREE | FREE | Enrol |
| P0760LP | ESSENTIAL SKILLS - APPLICATION OF NUMBER Level 2 Certificate | Lurgan Campus | Tue | 13:00 | 16:15 | 03/10/23 | 06/02/24 | 16 | FREE | FREE | FREE | FREE | Enrol |
| P0753AE | ESSENTIAL SKILLS - APPLICATION OF NUMBER Level 2 Certificate | Armagh Campus | Mon | 18:30 | 21:45 | 29/01/24 | 17/06/24 | 16 | FREE | FREE | FREE | FREE | Enrol |
| P0759LE | ESSENTIAL SKILLS - APPLICATION OF NUMBER Level 2 Certificate | Lurgan Campus | Tue | 18:30 | 21:45 | 06/02/24 | 11/06/24 | 16 | FREE | FREE | FREE | FREE | Enrol |
| P0762NE | ESSENTIAL SKILLS - APPLICATION OF NUMBER Level 2 Certificate | Newry Campus | Tue | 18:30 | 21:45 | 06/02/24 | 11/06/24 | 16 | FREE | FREE | FREE | FREE | Enrol |
| P0755BE | ESSENTIAL SKILLS - APPLICATION OF NUMBER Level 2 Certificate | Banbridge Campus | Thu | 18:30 | 21:45 | 22/02/24 | 20/06/24 | 16 | FREE | FREE | FREE | FREE | Enrol |
| P0769PE | ESSENTIAL SKILLS - APPLICATION OF NUMBER Level 2 Certificate | Portadown Campus | Thu | 18:30 | 21:45 | 22/02/24 | 20/06/24 | 16 | FREE | FREE | FREE | FREE | Enrol |
| P0764NP | ESSENTIAL SKILLS - APPLICATION OF NUMBER Level 2 Certificate | Newry Campus | Fri | 13:00 | 16:15 | 23/02/24 | 21/06/24 | 16 | FREE | FREE | FREE | FREE | Enrol |
| P1314BE | ESSENTIAL SKILLS - INFORMATION & COMMUNICATION TECHNOLOGY Level 2 Certificate | Banbridge Campus | Tue | 18:30 | 21:45 | 12/09/23 | 23/01/24 | 16 | FREE | FREE | FREE | FREE | Enrol |
| P3179NE | ESSENTIAL SKILLS - INFORMATION & COMMUNICATION TECHNOLOGY Level 2 Certificate NEW | Newry Campus | Tue | 18:30 | 21:45 | 19/09/23 | 23/01/24 | 16 | FREE | FREE | FREE | FREE | Enrol |
| P3186PE | ESSENTIAL SKILLS - INFORMATION & COMMUNICATION TECHNOLOGY Level 2 Certificate NEW | Portadown Campus | Tue | 18:30 | 21:45 | 19/09/23 | 23/01/24 | 16 | FREE | FREE | FREE | FREE | Enrol |
| P3185BE | ESSENTIAL SKILLS - INFORMATION & COMMUNICATION TECHNOLOGY Level 2 Certificate NEW | Banbridge Campus | Tue | 18:00 | 21:15 | 19/09/23 | 23/01/24 | 16 | FREE | FREE | FREE | FREE | Enrol |
| P3181AE | ESSENTIAL SKILLS - INFORMATION & COMMUNICATION TECHNOLOGY Level 2 Certificate NEW | Armagh Campus | Thu | 18:30 | 21:45 | 21/09/23 | 25/01/24 | 16 | FREE | FREE | FREE | FREE | Enrol |
| P0719PE | ESSENTIAL SKILLS - INFORMATION & COMMUNICATION TECHNOLOGY Level 2 Certificate | Portadown Campus | Tue | 18:30 | 21:45 | 21/11/23 | 09/04/24 | 16 | FREE | FREE | FREE | FREE | Enrol |
| P0713AE | ESSENTIAL SKILLS - INFORMATION & COMMUNICATION TECHNOLOGY Level 2 Certificate | Armagh Campus | Thu | 18:30 | 21:45 | 23/11/23 | 11/04/24 | 16 | FREE | FREE | FREE | FREE | Enrol |
| P0718NE | ESSENTIAL SKILLS - INFORMATION & COMMUNICATION TECHNOLOGY Level 2 Certificate | Newry Campus | Tue | 18:30 | 21:45 | 23/01/24 | 28/05/24 | 16 | FREE | FREE | FREE | FREE | Enrol |
| P0720PE | ESSENTIAL SKILLS - INFORMATION & COMMUNICATION TECHNOLOGY Level 2 Certificate | Portadown Campus | Tue | 18:30 | 21:45 | 23/01/24 | 28/05/24 | 16 | FREE | FREE | FREE | FREE | Enrol |
| P2992NE | ESSENTIAL SKILLS - INFORMATION & COMMUNICATION TECHNOLOGY Level 2 Certificate NEW | Newry Campus | Wed | 18:30 | 21:45 | 31/01/24 | 05/06/24 | 16 | FREE | FREE | FREE | FREE | Enrol |
| P3188BE | ESSENTIAL SKILLS - INFORMATION & COMMUNICATION TECHNOLOGY Level 2 Certificate NEW | Banbridge Campus | Tue | 18:30 | 21:45 | 06/02/24 | 11/06/24 | 16 | FREE | FREE | FREE | FREE | Enrol |
| P3187PE | ESSENTIAL SKILLS - INFORMATION & COMMUNICATION TECHNOLOGY Level 2 Certificate NEW | Portadown Campus | Tue | 18:30 | 21:45 | 06/02/24 | 11/06/24 | 16 | FREE | FREE | FREE | FREE | Enrol |
| P0714AE | ESSENTIAL SKILLS - INFORMATION & COMMUNICATION TECHNOLOGY Level 2 Certificate | Armagh Campus | Thu | 18:30 | 21:45 | 08/02/24 | 13/06/24 | 16 | FREE | FREE | FREE | FREE | Enrol |
| P3182AE | ESSENTIAL SKILLS - INFORMATION & COMMUNICATION TECHNOLOGY Level 2 Certificate NEW | Armagh Campus | Thu | 18:30 | 21:45 | 08/02/24 | 13/06/24 | 16 | FREE | FREE | FREE | FREE | Enrol |
| ESSENTIAL SKILLS - COURSES IN THE COMMUNITY | | | | | | | | | | | | | |
| P1031YP | ESSENTIAL SKILLS - INFORMATION & COMMUNICATION TECHNOLOGY Level 2 Certificate | North Lurgan Community Centre | Fri | 09:30 | 12:45 | 22/09/23 | 26/01/24 | 16 | FREE | FREE | FREE | FREE | Enrol |
| P1024XE | ESSENTIAL SKILLS - INFORMATION & COMMUNICATION TECHNOLOGY Level 2 Certificate | Rathfriland HUB | Mon | 18:00 | 21:15 | 25/09/23 | 07/02/24 | 16 | FREE | FREE | FREE | FREE | Enrol |
| P1017WE | ESSENTIAL SKILLS - INFORMATION & COMMUNICATION TECHNOLOGY Level 2 Certificate | Cullyhanna Wald Centre | Wed | 18:30 | 21:45 | 27/09/23 | 31/01/24 | 16 | FREE | FREE | FREE | FREE | Enrol |
| P1987ZE | ESSENTIAL SKILLS - INFORMATION & COMMUNICATION TECHNOLOGY Level 2 Certificate | Regenerate Centre Portadown | Wed | 18:45 | 22:00 | 27/09/23 | 31/01/24 | 16 | FREE | FREE | FREE | FREE | Enrol |
| P1036ZE | ESSENTIAL SKILLS - INFORMATION & COMMUNICATION TECHNOLOGY Level 2 Certificate | Regenerate Centre Portadown | Mon | 18:30 | 21:45 | 02/10/23 | 05/02/24 | 16 | FREE | FREE | FREE | FREE | Enrol |
| P1032YP | ESSENTIAL SKILLS - INFORMATION & COMMUNICATION TECHNOLOGY Level 2 Certificate | Drumellan Community Centre | Mon | 09:30 | 12:45 | 02/10/23 | 05/02/24 | 16 | FREE | FREE | FREE | FREE | Enrol |
| P1039ZP | ESSENTIAL SKILLS - INFORMATION & COMMUNICATION TECHNOLOGY Level 2 Certificate | Regenerate Centre Portadown | Wed | 10:30 | 13:45 | 04/10/23 | 07/02/24 | 16 | FREE | FREE | FREE | FREE | Enrol |
| P3915YE | ESSENTIAL SKILLS - INFORMATION & COMMUNICATION TECHNOLOGY Level 2 Certificate NEW | Drumellan Community Centre | Wed | 18:30 | 21:45 | 11/10/23 | 21/02/24 | 16 | FREE | FREE | FREE | FREE | Enrol |
| P1043WE | ESSENTIAL SKILLS - INFORMATION & COMMUNICATION TECHNOLOGY Level 2 Certificate | Nautilus Centre, Kilkeel | Mon | 18:30 | 21:45 | 22/01/24 | 17/06/24 | 16 | FREE | FREE | FREE | FREE | Enrol |
| P1035YP | ESSENTIAL SKILLS - INFORMATION & COMMUNICATION TECHNOLOGY Level 2 Certificate | North Lurgan Community Centre | Fri | 09:30 | 12:45 | 02/02/24 | 07/06/24 | 16 | FREE | FREE | FREE | FREE | Enrol |
| P1025XE | ESSENTIAL SKILLS - INFORMATION & COMMUNICATION TECHNOLOGY Level 2 Certificate | Rathfriland HUB | Mon | 18:00 | 21:15 | 05/02/24 | 01/07/24 | 16 | FREE | FREE | FREE | FREE | Enrol |
| P1029ZE | ESSENTIAL SKILLS - INFORMATION & COMMUNICATION TECHNOLOGY Level 2 Certificate | Regenerate Centre Portadown | Mon | 18:30 | 21:45 | 05/02/24 | 01/07/24 | 16 | FREE | FREE | FREE | FREE | Enrol |
| P1033YP | ESSENTIAL SKILLS - INFORMATION & COMMUNICATION TECHNOLOGY Level 2 Certificate | Drumellan Community Centre | Mon | 09:30 | 12:45 | 05/02/24 | 01/07/24 | 16 | FREE | FREE | FREE | FREE | Enrol |
| FIRST AID | | | | | | | | | | | | | |
| P0816AE | PAEDIATRIC FIRST AID Level 3 Award | Armagh Campus | Mon | 19:00 | 21:00 | 08/01/24 | 04/03/24 | 8 | £35 | £35 | £12 | N/A | Enrol |
| P0817BE | PAEDIATRIC FIRST AID Level 3 Award | Banbridge Campus | Thu | 19:00 | 21:00 | 01/02/24 | 11/04/24 | 8 | £35 | £35 | £12 | N/A | Enrol |
| P0819NE | PAEDIATRIC FIRST AID Level 3 Award | Newry Campus | Wed | 19:00 | 21:00 | 24/04/24 | 12/06/24 | 8 | £35 | £35 | £12 | N/A | Enrol |
| P0820PE | PAEDIATRIC FIRST AID Level 3 Award | Portadown Campus | Thu | 19:00 | 21:00 | 25/04/24 | 13/06/24 | 8 | £35 | £35 | £12 | N/A | Enrol |
| P3565SE | PAEDIATRIC FIRST AID Level 3 Award NEW FREE Skill UP | Armagh Campus | Mon | 19:00 | 21:00 | 08/01/24 | 04/03/24 | 8 | FREE | FREE | FREE | FREE | Apply |
| P3566SE | PAEDIATRIC FIRST AID Level 3 Award NEW FREE Skill UP | Banbridge Campus | Thu | 19:00 | 21:00 | 01/02/24 | 11/04/24 | 8 | FREE | FREE | FREE | FREE | Apply |
| P0814NE | EMERGENCY FIRST AID AT WORK Level 3 Award | Newry Campus | Wed | 18:30 | 21:00 | 20/03/24 | 24/04/24 | 4 | £35 | £35 | £12 | N/A | Enrol |
| P0815PE | EMERGENCY FIRST AID AT WORK Level 3 Award | Portadown Campus | Thu | 18:30 | 21:00 | 21/03/24 | 25/04/24 | 4 | £35 | £35 | £12 | N/A | Enrol |
| FIRST AID - COURSES IN THE COMMUNITY | | | | | | | | | | | | | |
| P3369WE | EMERGENCY FIRST AID AT WORK Level 3 Award NEW | Crossmaglen Community Centre | Tue | 18:30 | 21:00 | 20/02/24 | 12/03/24 | 4 | £35 | £35 | £12 | N/A | Enrol |
| P3357WP | PAEDIATRIC FIRST AID Level 3 Award NEW | Crossmaglen Community Centre | Tue | 10:00 | 12:00 | 10/10/23 | 05/12/23 | 8 | £35 | £35 | £12 | N/A | Enrol |

COURSE KEY

* - Year 1 fee only
** - Module fee only
U - Students required to purchase uniform

K - Students required to purchase kit
E - Exams fee payable
L - Licence fee payable

A - Administration fee payable
e-Campus - course delivered fully online or blended learning (% on campus & % online)

| Course Code | Course Title | Location | Day | Start Time | End Time | Start Date | End Date | No. of Wks | Tuition Fee | Concession Fee | Exam/Reg Fee | Materials Fee | Apply/ Enrol |
|--|--|--------------------------|-----------|------------|----------|------------|----------|------------|-------------|----------------|--------------|---------------|--------------|
| FLOWER ARRANGING | | | | | | | | | | | | | |
| P0540NE | FLOWER ARRANGING - ADVANCED Recreational | Newry Campus | Wed | 19:00 | 21:00 | 10/01/24 | 17/04/24 | 12 | £77 | N/A | N/A | £6 | Enrol |
| P0531BE | FLOWER ARRANGING Recreational | Banbridge Campus | Tue | 19:00 | 21:00 | 19/09/23 | 12/12/23 | 12 | £77 | N/A | N/A | £6 | Enrol |
| P1087YP | FLOWER ARRANGING Recreational | Lurgan Campus | Tue | 09:00 | 11:00 | 19/09/23 | 12/12/23 | 12 | £77 | N/A | N/A | £6 | Enrol |
| P1970NE | FLOWER ARRANGING Recreational | Newry Campus | Wed | 19:00 | 21:00 | 27/09/23 | 13/12/23 | 11 | £70 | N/A | N/A | £6 | Enrol |
| P1088YP | FLOWER ARRANGING Recreational | Lurgan Campus | Tue | 11:00 | 13:00 | 16/01/24 | 23/04/24 | 12 | £77 | N/A | N/A | £6 | Enrol |
| P0532BE | FLOWER ARRANGING Recreational | Banbridge Campus | Tue | 19:00 | 21:00 | 20/02/24 | 09/04/24 | 6 | £38 | N/A | N/A | £6 | Enrol |
| P0533BE | FLOWER ARRANGING Recreational | Banbridge Campus | Tue | 19:00 | 21:00 | 23/04/24 | 28/05/24 | 6 | £38 | N/A | N/A | £6 | Enrol |
| GCSE | | | | | | | | | | | | | |
| P3611NP | GCSE DIGITAL TECHNOLOGY (PROGRAMMING ROUTE) NEW | Newry Campus | Wed | 16:00 | 18:30 | 06/09/23 | 05/06/24 | 32 | £176 | £88 | £35 | N/A | Enrol |
| P3610AP | GCSE DIGITAL TECHNOLOGY (PROGRAMMING ROUTE) NEW | Armagh Campus | Thu | 16:00 | 18:30 | 07/09/23 | 06/06/24 | 32 | £176 | £88 | £35 | N/A | Enrol |
| P0806NE | GCSE BIOLOGY Level 2 Certificate | Newry Campus | Tue | 19:00 | 21:30 | 19/09/23 | 21/05/24 | 30 | £165 | £83 | £35 | N/A | Enrol |
| P0807PE | GCSE BIOLOGY Level 2 Certificate | Portadown Campus | Tue | 19:00 | 21:30 | 19/09/23 | 21/05/24 | 30 | £165 | £83 | £35 | N/A | Enrol |
| P0805AE | GCSE BIOLOGY Level 2 Certificate | Armagh Campus | Thu | 19:00 | 21:30 | 21/09/23 | 23/05/24 | 30 | £165 | £83 | £35 | N/A | Enrol |
| P0823LE | GCSE ENGLISH LANGUAGE Level 2 Certificate | Lurgan Campus | Tue | 18:30 | 21:00 | 19/09/23 | 21/05/24 | 30 | £165 | £83 | £35 | N/A | Enrol |
| P0824NE | GCSE ENGLISH LANGUAGE Level 2 Certificate | Newry Campus | Tue | 18:30 | 21:00 | 19/09/23 | 21/05/24 | 30 | £165 | £83 | £35 | N/A | Enrol |
| P0826PE | GCSE ENGLISH LANGUAGE Level 2 Certificate | Portadown Campus | Tue | 18:30 | 21:00 | 19/09/23 | 21/05/24 | 30 | £165 | £83 | £35 | N/A | Enrol |
| P0825NE | GCSE ENGLISH LANGUAGE Level 2 Certificate | Newry Campus | Wed | 18:30 | 21:00 | 20/09/23 | 22/05/24 | 30 | £165 | £83 | £35 | N/A | Enrol |
| P0821AE | GCSE ENGLISH LANGUAGE Level 2 Certificate | Armagh Campus | Thu | 18:30 | 21:00 | 21/09/23 | 23/05/24 | 30 | £165 | £83 | £35 | N/A | Enrol |
| P0822BE | GCSE ENGLISH LANGUAGE Level 2 Certificate | Banbridge Campus | Thu | 18:30 | 21:00 | 21/09/23 | 28/05/24 | 30 | £165 | £83 | £35 | N/A | Enrol |
| P2814NP | GCSE MATHEMATICS Level 2 Certificate NEW | Newry Campus | Thu | 16:00 | 18:00 | 21/09/23 | 06/06/24 | 32 | £141 | £71 | £35 | N/A | Enrol |
| P0724BE | GCSE MATHEMATICS Level 2 Certificate | Banbridge Campus | Tue | 19:00 | 21:30 | 26/09/23 | 28/05/24 | 30 | £165 | £83 | £35 | N/A | Enrol |
| P0725LE | GCSE MATHEMATICS Level 2 Certificate | Lurgan Campus | Tue | 19:00 | 21:30 | 26/09/23 | 28/05/24 | 30 | £165 | £83 | £35 | N/A | Enrol |
| P0727NE | GCSE MATHEMATICS Level 2 Certificate | Newry Campus | Tue | 19:00 | 21:30 | 26/09/23 | 28/05/24 | 30 | £165 | £83 | £35 | N/A | Enrol |
| P0728PE | GCSE MATHEMATICS Level 2 Certificate | Portadown Campus | Tue | 19:00 | 21:30 | 26/09/23 | 28/05/24 | 30 | £165 | £83 | £35 | N/A | Enrol |
| P0726NE | GCSE MATHEMATICS Level 2 Certificate | Newry Campus | Tue | 19:00 | 21:30 | 27/09/23 | 29/05/24 | 30 | £165 | £83 | £35 | N/A | Enrol |
| P0723AE | GCSE MATHEMATICS Level 2 Certificate | Armagh Campus | Thu | 18:30 | 21:00 | 28/09/23 | 30/05/24 | 30 | £165 | £83 | £35 | N/A | Enrol |
| P0729PE | GCSE MATHEMATICS Level 2 Certificate | Portadown Campus | Thu | 19:00 | 21:30 | 28/09/23 | 30/05/24 | 30 | £165 | £83 | £35 | N/A | Enrol |
| HAIRDRESSING & BARBERING | | | | | | | | | | | | | |
| P2498AD | BARBERING Level 3 NVQ Diploma * NEW | Armagh Campus | Thu | 09:15 | 20:30 | 05/10/23 | 06/06/24 | 30 | £594 | £297 | £145 | U/K | Apply |
| P0607NE | CUTTING MEN'S HAIR Level 2 Award | Newry Campus | Tue | 17:00 | 21:00 | 06/02/24 | 14/05/24 | 12 | £106 | £53 | £42 | U/K | Enrol |
| P0606LE | CUTTING MEN'S HAIR Level 2 Award | Lurgan Campus | Wed | 17:00 | 21:00 | 07/02/24 | 15/05/24 | 12 | £106 | £53 | £42 | U/K | Enrol |
| P0395AD | BARBERING Level 2 NVQ Diploma * | Armagh Campus | Mon | 09:15 | 20:15 | 11/09/23 | 03/06/24 | 30 | £660 | £330 | £112 | U/K | Enrol |
| P3121LE | HAIRDRESSING Level 2 NVQ Diploma * NEW | Lurgan Campus | Tue | 17:00 | 21:00 | 19/09/23 | 21/05/24 | 30 | £264 | £132 | £123 | U/K | Enrol |
| P0400NE | HAIRDRESSING Level 2 NVQ Diploma * | Newry Campus | Tue | 17:00 | 21:00 | 19/09/23 | 21/05/24 | 30 | £264 | £132 | £123 | U/K | Enrol |
| P1277AE | HAIRDRESSING Level 2 NVQ Diploma * | Armagh Campus | Thu | 17:00 | 21:00 | 21/09/23 | 23/05/24 | 30 | £264 | £132 | £119 | U/K | Enrol |
| P2006WE | CUTTING MEN'S HAIR Level 2 Award | Newry Campus | Mon | 17:00 | 21:00 | 02/10/23 | 08/01/24 | 12 | £106 | £53 | £80 | N/A | Enrol |
| P2963VE | CUTTING MEN'S HAIR Level 2 Award NEW | Armagh Campus | Thu | 17:00 | 21:00 | 05/10/23 | 11/01/24 | 12 | £106 | £53 | £77 | N/A | Enrol |
| HEALTH & SOCIAL CARE | | | | | | | | | | | | | |
| P2188BE | LEADERSHIP FOR HEALTH AND SOCIAL CARE SERVICES (ADULTS MANAGEMENT) Level 5 Diploma * NEW | Banbridge Campus | Thu | 18:30 | 21:45 | 14/09/23 | 30/05/24 | 32 | £442 | N/A | £225 | N/A | Apply |
| P0062AD | HEALTHCARE PRACTICE Level 4 Higher National Certificate * | Armagh Campus | Mon & Thu | 14:00 | 22:00 | 11/09/23 | 17/06/24 | 32 | £1,030 | N/A | £246 | N/A | Apply |
| P0065ND | HEALTHCARE PRACTICE Level 4 Higher National Certificate * | Newry Campus | Wed & Thu | 09:15 | 17:00 | 13/09/23 | 30/05/24 | 32 | £1,030 | N/A | £246 | N/A | Apply |
| P0423NP | HEALTH AND SOCIAL CARE (ADULTS) Level 3 Diploma * | Newry Campus | Mon | 14:00 | 17:15 | 25/09/23 | 17/06/24 | 30 | £528 | £264 | £135 | £50 | Apply |
| P0422AE | HEALTH AND SOCIAL CARE (ADULTS) Level 2 Diploma | Armagh Campus | Mon | 18:00 | 21:15 | 18/09/23 | 10/06/24 | 30 | £528 | £264 | £135 | £50 | Enrol |
| HOSPITALITY & CATERING | | | | | | | | | | | | | |
| P0087ND | HOSPITALITY & TOURISM WITH SPECIALISMS - CULINARY ARTS Level 5 Foundation Degree * | Newry Campus | Tue | 09:15 | 18:15 | 12/09/23 | 20/08/24 | 43 | £703 | N/A | £346 | N/A | Apply |
| P0088ND | HOSPITALITY & TOURISM WITH SPECIALISMS - HOSPITALITY Level 5 Foundation Degree * | Newry Campus | Tue | 09:15 | 18:15 | 12/09/23 | 20/08/24 | 43 | £868 | N/A | £346 | N/A | Apply |
| P1941ND | HOSPITALITY & TOURISM WITH SPECIALISMS - TOURISM Level 5 Foundation Degree * | Newry Campus | Tue | 09:15 | 18:15 | 12/09/23 | 20/08/24 | 43 | £703 | N/A | £346 | N/A | Apply |
| P0089ND | HOSPITALITY & TOURISM WITH SPECIALISMS - HOSP Higher Level Apprenticeship Level 5 Foundation Degree | Newry Campus | Tue | 09:15 | 18:15 | 12/09/23 | 20/08/24 | 43 | FREE | N/A | N/A | N/A | Apply |
| P2019NE | INTERNAL QUALITY ASSURANCE OF ASSESSMENT PROCESSES & PRACTICE Level 4 Award | Newry Campus | Wed & Thu | 18:00 | 20:00 | 20/09/23 | 11/04/24 | 24 | £455 | N/A | N/A | N/A | Apply |
| P3709DE | INTERNAL QUALITY ASSURANCE OF ASSESSMENT PROCESSES & PRACTICE Level 4 Award NEW | eCampus | Wed & Thu | 18:00 | 20:00 | 20/09/23 | 11/04/24 | 24 | £455 | N/A | £75 | N/A | Apply |
| P2441NE | GENERAL PATISSERIE AND CONFECTIONERY Level 3 Certificate NEW | Newry Campus | Mon | 17:00 | 21:30 | 18/09/23 | 20/05/24 | 28 | £337 | £169 | £70 | £95 | Apply |
| P0392ND | PROFESSIONAL COOKERY Level 3 NVQ Diploma * | Newry Campus | Tue | 09:15 | 17:00 | 05/09/23 | 07/05/24 | 30 | £462 | £231 | £98 | N/A | Apply |
| P2439NE | GENERAL PATISSERIE AND CONFECTIONERY Level 2 Certificate NEW | Newry Campus | Tue | 17:00 | 21:15 | 26/09/23 | 28/05/24 | 30 | £264 | £132 | £48 | £95 | Enrol |
| P2438ND | PROFESSIONAL COOKERY Level 2 NVQ Diploma NEW | Newry Campus | Mon | 09:15 | 17:00 | 04/09/23 | 20/05/24 | 30 | £462 | £231 | £113 | N/A | Enrol |
| P2443PD | PROFESSIONAL COOKERY Level 2 NVQ Diploma NEW | Portadown Campus | Mon | 09:15 | 17:00 | 04/09/23 | 20/05/24 | 30 | £462 | £231 | £113 | N/A | Enrol |
| P3254AP | BAKERY AND PATISSERIE TECHNIQUES Level 2 Award NEW | Armagh Campus | Thu | 17:00 | 21:15 | 22/02/24 | 11/04/24 | 6 | £53 | £35 | £34 | £15 | Enrol |
| P3253AP | BAKERY AND PATISSERIE TECHNIQUES Level 2 Award NEW | Armagh Campus | Thu | 17:00 | 21:15 | 09/11/23 | 14/12/23 | 6 | £53 | £35 | £34 | £15 | Enrol |
| P3251AE | CHOCOLATE MAKING Level 1 Award NEW | Armagh Campus | Mon | 16:00 | 21:15 | 11/09/23 | 04/12/23 | 12 | £132 | £66 | £30 | £15 | Enrol |
| P3252NE | CHOCOLATE MAKING Level 1 Award NEW | Newry Campus | Mon | 16:00 | 21:15 | 22/01/24 | 13/05/24 | 12 | £132 | £66 | £30 | £15 | Enrol |
| P0653NE | CAKE DECORATING INTERMEDIATE Recreational | Newry Campus | Mon | 19:00 | 21:30 | 05/02/24 | 22/04/24 | 8 | £64 | N/A | N/A | N/A | Enrol |
| P0655PE | CAKE DECORATING INTERMEDIATE Recreational | Portadown Campus | Tue | 19:00 | 21:30 | 06/02/24 | 16/04/24 | 8 | £64 | N/A | N/A | N/A | Enrol |
| P0652NE | CAKE DECORATING BEGINNERS Recreational | Newry Campus | Mon | 19:00 | 21:30 | 25/09/23 | 20/11/23 | 8 | £64 | N/A | N/A | N/A | Enrol |
| P0654PE | CAKE DECORATING BEGINNERS Recreational | Portadown Campus | Tue | 19:00 | 21:30 | 26/09/23 | 21/11/23 | 8 | £64 | N/A | N/A | N/A | Enrol |
| P0658NE | COOKERY - BAKE YOUR OWN BREAD Recreational | Newry Campus | Tue | 18:45 | 21:15 | 19/09/23 | 17/10/23 | 5 | £40 | N/A | N/A | £15 | Enrol |
| P0657NE | COOKERY - CHRISTMAS FESTIVE FOOD Recreational | Newry Campus | Tue | 18:45 | 21:15 | 07/11/23 | 05/12/23 | 5 | £40 | N/A | N/A | £15 | Enrol |
| P0667PE | COOKERY - CHRISTMAS FESTIVE FOOD Recreational | Portadown Campus | Thu | 18:45 | 21:15 | 09/11/23 | 07/12/23 | 5 | £40 | N/A | N/A | £15 | Enrol |
| P0663NE | COOKERY - CURRY AND THAI HOUSE Recreational | Newry Campus | Tue | 18:45 | 21:15 | 20/02/24 | 19/03/24 | 5 | £40 | N/A | N/A | £15 | Enrol |
| P0665PE | COOKERY - DELICIOUS PASTRIES AND PUDDINGS Recreational | Portadown Campus | Tue | 18:45 | 21:15 | 19/09/23 | 17/10/23 | 5 | £40 | N/A | N/A | £15 | Enrol |
| P0659NE | COOKERY - DELICIOUS PASTRIES AND PUDDINGS Recreational | Newry Campus | Mon | 18:45 | 21:15 | 06/11/23 | 04/12/23 | 5 | £40 | N/A | N/A | £15 | Enrol |
| P0661NE | COOKERY - ITALIAN DINING Recreational | Newry Campus | Tue | 18:45 | 21:15 | 06/02/24 | 12/03/24 | 5 | £40 | N/A | N/A | £15 | Enrol |
| P0671PE | COOKERY - ITALIAN DINING Recreational | Portadown Campus | Thu | 18:45 | 21:15 | 08/02/24 | 14/03/24 | 5 | £40 | N/A | N/A | £15 | Enrol |
| HOSPITALITY & CATERING - DINING IN THE COMMUNITY | | | | | | | | | | | | | |
| P1156WE | COOKERY - PASTRIES AND PUDDINGS Recreational | Nautilus Centre, Kilkeel | Thu | 18:45 | 21:15 | 09/11/23 | 07/12/23 | 5 | £40 | N/A | N/A | £15 | Enrol |
| P1157WE | COOKERY - ITALIAN Recreational | Nautilus Centre, Kilkeel | Thu | 18:45 | 21:15 | 11/01/24 | 08/02/24 | 5 | £40 | N/A | N/A | £15 | Enrol |
| P1158WE | COOKERY - FISH Recreational | Nautilus Centre, Kilkeel | Thu | 18:45 | 21:15 | 22/02/24 | 21/03/24 | 5 | £40 | N/A | N/A | £15 | Enrol |
| P1159WE | COOKERY - MEDITERRANEAN Recreational | Nautilus Centre, Kilkeel | Thu | 18:45 | 21:15 | 25/04/24 | 23/05/24 | 5 | £40 | N/A | N/A | £15 | Enrol |

COURSE KEY

* - Year 1 fee only
** - Module fee only
U - Students required to purchase uniform

K - Students required to purchase kit
E - Exams fee payable
L - Licence fee payable

A - Administration fee payable
e-Campus - course delivered fully online or blended learning (% on campus & % online)

| Course Code | Course Title | Location | Day | Start Time | End Time | Start Date | End Date | No. of Wks | Tuition Fee | Concession Fee | Exam/Reg Fee | Materials Fee | Apply/Enrol |
|---|--|---------------------------|-----|------------|----------|------------|----------|------------|-------------|----------------|--------------|---------------|-------------|
| LANGUAGES | | | | | | | | | | | | | |
| P0674NE | FRENCH INTERMEDIATE CONVERSATIONAL Recreational | Newry Campus | Tue | 18:30 | 20:30 | 06/02/24 | 30/04/24 | 10 | £64 | N/A | N/A | N/A | Enrol |
| P0678PE | FRENCH INTERMEDIATE CONVERSATIONAL Recreational | Portadown Campus | Thu | 18:30 | 20:30 | 08/02/24 | 02/05/24 | 10 | £64 | N/A | N/A | N/A | Enrol |
| P0675NE | SPANISH INTERMEDIATE CONVERSATIONAL Recreational | Newry Campus | Mon | 18:30 | 20:30 | 05/02/24 | 13/05/24 | 10 | £64 | N/A | N/A | N/A | Enrol |
| P0679PE | SPANISH INTERMEDIATE CONVERSATIONAL Recreational | Portadown Campus | Tue | 18:30 | 20:30 | 06/02/24 | 30/04/24 | 10 | £64 | N/A | N/A | N/A | Enrol |
| P0672NE | FRENCH BASIC CONVERSATIONAL Recreational | Newry Campus | Tue | 18:30 | 20:30 | 19/09/23 | 28/11/23 | 10 | £64 | N/A | N/A | N/A | Enrol |
| P0676PE | FRENCH BASIC CONVERSATIONAL Recreational | Portadown Campus | Thu | 18:30 | 20:30 | 21/09/23 | 30/11/23 | 10 | £64 | N/A | N/A | N/A | Enrol |
| P0673NE | SPANISH BASIC CONVERSATIONAL Recreational | Newry Campus | Mon | 18:30 | 20:30 | 25/09/23 | 04/12/23 | 10 | £64 | N/A | N/A | N/A | Enrol |
| P0677PE | SPANISH BASIC CONVERSATIONAL Recreational | Portadown Campus | Tue | 18:30 | 20:30 | 26/09/23 | 05/12/23 | 10 | £64 | N/A | N/A | N/A | Enrol |
| LEISURE & RECREATIONAL | | | | | | | | | | | | | |
| P0690NE | YOGA INTERMEDIATE Recreational | Newry Campus | Thu | 19:00 | 21:00 | 03/10/23 | 30/01/24 | 15 | £96 | N/A | N/A | N/A | Enrol |
| P0686NE | SPORT - INTRODUCTION TO SPORTS MASSAGE Recreational | Newry Campus | Tue | 18:30 | 21:45 | 16/01/24 | 27/02/24 | 6 | £58 | N/A | N/A | £15 | Enrol |
| P0681AE | SPORT - INTRODUCTION TO SPORTS MASSAGE Recreational | Armagh Campus | Thu | 18:30 | 21:45 | 01/02/24 | 14/03/24 | 6 | £58 | N/A | N/A | £15 | Enrol |
| P0688LE | YOGA Recreational | Lurgan Campus | Tue | 19:00 | 20:30 | 19/09/23 | 16/01/24 | 15 | £72 | N/A | N/A | N/A | Enrol |
| P0689LE | YOGA Recreational | Lurgan Campus | Tue | 19:00 | 20:30 | 30/01/24 | 28/05/24 | 15 | £72 | N/A | N/A | N/A | Enrol |
| LEISURE & RECREATIONAL - COURSES IN THE COMMUNITY | | | | | | | | | | | | | |
| P1166YE | YOGA Recreational | St Patricks PS Magheralin | Wed | 19:00 | 20:30 | 20/09/23 | 13/12/23 | 12 | £58 | N/A | N/A | N/A | Enrol |
| P1167YE | YOGA Recreational | St Patricks PS Magheralin | Wed | 19:00 | 20:30 | 17/01/24 | 24/04/24 | 12 | £58 | N/A | N/A | N/A | Enrol |
| MANAGEMENT & PROFESSIONAL DEVELOPMENT | | | | | | | | | | | | | |
| P3623DD | STRATEGIC PEOPLE MANAGEMENT Level 7 Advanced Diploma | eCampus | Tue | 13:30 | 22:00 | 12/09/23 | 28/05/24 | 32 | £589 | N/A | £191 | N/A | Apply |
| P3672NP | STRATEGIC MANAGEMENT AND LEADERSHIP Level 7 Diploma | Newry Campus | Thu | 09:15 | 16:15 | 14/09/23 | 30/05/24 | 32 | £442 | N/A | £191 | N/A | Apply |
| P3670DE | STRATEGIC MANAGEMENT AND LEADERSHIP Level 7 Certificate | eCampus | Tue | 17:30 | 21:45 | 23/01/24 | 28/05/24 | 16 | £147 | N/A | £191 | N/A | Apply |
| P0078ND | PEOPLE MANAGEMENT Level 5 Associate Diploma | Newry Campus | Mon | 14:00 | 22:00 | 11/09/23 | 10/06/24 | 30 | £589 | N/A | £146 | N/A | Apply |
| P0079PD | PEOPLE MANAGEMENT Level 5 Associate Diploma | Portadown Campus | Tue | 14:00 | 22:00 | 12/09/23 | 28/05/24 | 32 | £589 | N/A | £146 | N/A | Apply |
| P3140SE | EFFECTIVE COACHING AND MENTORING Level 5 Certificate NEW FREE Skill UP | eCampus | Wed | 17:30 | 21:45 | 20/09/23 | 28/02/24 | 20 | FREE | FREE | FREE | FREE | Apply |
| P2725SP | LEADERSHIP AND MANAGEMENT Level 5 Award NEW FREE Skill UP | eCampus | Tue | 17:30 | 21:45 | 09/04/24 | 11/06/24 | 10 | FREE | FREE | FREE | FREE | Apply |
| P3139SE | LEADERSHIP AND MANAGEMENT Level 5 Certificate FREE Skill UP | eCampus | Tue | 17:30 | 21:45 | 12/09/23 | 20/02/24 | 20 | FREE | FREE | FREE | FREE | Apply |
| P3395SE | LEADERSHIP AND MANAGEMENT Level 5 Certificate FREE Skill UP | eCampus | Mon | 17:30 | 21:45 | 11/09/23 | 19/02/24 | 20 | FREE | FREE | FREE | FREE | Apply |
| P0390NE | PEOPLE PRACTICE Level 3 Foundation Certificate | Newry Campus | Mon | 17:30 | 21:45 | 02/10/23 | 24/06/24 | 30 | £264 | £132 | £100 | N/A | Enrol |
| P0391PE | PEOPLE PRACTICE Level 3 Foundation Certificate | Portadown Campus | Thu | 17:30 | 21:45 | 05/10/23 | 06/06/24 | 30 | £264 | £132 | £100 | N/A | Enrol |
| P2989SE | LEADERSHIP AND MANAGEMENT Level 3 Certificate (Top-up from Award) NEW FREE Skill UP | eCampus | Tue | 18:30 | 21:45 | 28/11/23 | 05/03/24 | 12 | FREE | FREE | FREE | FREE | Apply |
| P2988SE | LEADERSHIP AND MANAGEMENT Level 3 Award NEW FREE Skill UP | eCampus | Tue | 18:30 | 21:45 | 12/09/23 | 21/11/23 | 10 | FREE | FREE | FREE | FREE | Apply |
| P3348SE | LEADERSHIP AND MANAGEMENT Level 3 Award NEW FREE Skill UP | eCampus | Wed | 18:30 | 21:45 | 13/09/23 | 22/11/23 | 10 | FREE | FREE | FREE | FREE | Apply |
| P2685SE | LEADERSHIP AND MANAGEMENT Level 3 Award NEW FREE Skill UP | eCampus | Thu | 18:30 | 21:45 | 28/09/23 | 07/12/23 | 10 | FREE | FREE | FREE | FREE | Apply |
| P2990SE | LEADERSHIP AND MANAGEMENT Level 3 Award NEW FREE Skill UP | eCampus | Thu | 18:30 | 21:45 | 23/11/23 | 08/02/24 | 10 | FREE | FREE | FREE | FREE | Apply |
| P2141AP | FINANCE FOR MANAGERS (BITESIZE) Recreational | Armagh Campus | Fri | 09:30 | 12:45 | 09/02/24 | 08/03/24 | 4 | £38.40 | N/A | N/A | N/A | Enrol |
| P2140NP | FINANCE FOR MANAGERS (BITESIZE) Recreational | Newry Campus | Fri | 09:30 | 12:45 | 09/02/24 | 08/03/24 | 4 | £38.40 | N/A | N/A | N/A | Enrol |
| P2142PP | FINANCE FOR MANAGERS (BITESIZE) Recreational | Portadown Campus | Fri | 09:30 | 12:45 | 19/04/24 | 10/05/24 | 4 | £38.40 | N/A | N/A | N/A | Enrol |
| P2144AP | PRODUCING A BUSINESS PLAN (BITESIZE) Recreational | Armagh Campus | Fri | 13:30 | 16:45 | 09/02/24 | 08/03/24 | 4 | £38.40 | N/A | N/A | N/A | Enrol |
| P2143NP | PRODUCING A BUSINESS PLAN (BITESIZE) Recreational | Newry Campus | Fri | 13:30 | 16:45 | 09/02/24 | 08/03/24 | 4 | £38.40 | N/A | N/A | N/A | Enrol |
| P2145PP | PRODUCING A BUSINESS PLAN (BITESIZE) Recreational | Portadown Campus | Fri | 13:30 | 16:45 | 19/04/24 | 10/05/24 | 4 | £38.40 | N/A | N/A | N/A | Enrol |

COURSE KEY

* - Year 1 fee only
** - Module fee only
U - Students required to purchase uniform

K - Students required to purchase kit
E - Exams fee payable
L - Licence fee payable

A - Administration fee payable
e-Campus - course delivered fully online or blended learning (% on campus & % online)



ANDREW MCVARNOCK

PROFESSIONAL CHEF
LEVEL 2 DIPLOMA TRAINEESHIP

I chose the Chef Traineeship after attending one of the College's Open Days. Lecturers provided me with lots of information about the course and I began to realise how the course would develop my skills and lead to lots of job opportunities within the hospitality sector. In the kitchen we spend time learning practical skills followed by topic tests and exams. When I reflect on each week, I can see how much I've learnt and how my skills have improved. I am planning on progressing to the level 3 professional cookery apprenticeship and eventually become a head chef in a Michelin star restaurant – got to dream big!

HIGHER LEVEL
APPRENTICESHIPS

The alternative route to university

Higher Level Apprenticeships (HLA) offers you the chance to get a degree or foundation degree while undertaking paid on the job training. Plus, there is the added bonus of no fees*, so its 'win, win' all round – relevant job experience plus a wage with no fees payable.

**Higher Level Apprenticeships tuition fees are fully funded by the Department for the Economy*

Subjects Offered

LEVEL 6

Computing for Industry (Degree Top-Up) **NEW**
Construction Engineering Management (Degree Top-Up) **NEW***
Digital Marketing, Communications and Advertising (Degree Top-Up) **NEW**
Engineering (Degree Top-Up) **NEW***

LEVEL 4/5

Accounting Technicians
Applied Industrial Science (Life or Chemical Science pathway)

Cloud Computing, Analytics and Security for Industry
Construction (Digital Construction Management) *****
Construction (Quantity Surveying) **NEW***
Digital Marketing, Advertising and Communications
Engineering (Electrical & Electronic) **NEW***
Engineering (Mechatronic Engineering)
Engineering (Technical Design & Manufacture)
FinTech **NEW***
Hospitality and Tourism with Specialisms
Sport and Exercise **NEW**

Coming Soon

Construction (Civil Engineering) *****
Business Management*

**Subject to validation*

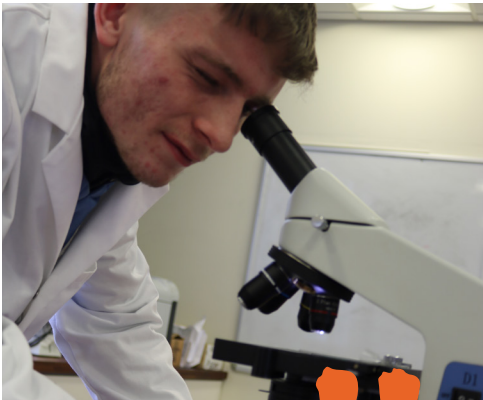
Secure your place today.

Search 'Higher Level Apprenticeships' on the courses section of our website.

Contact the HLA Team

T: 028 3839 7778 / 028 3025 9664
E: hla@src.ac.uk

#ThinkDifferentlyThinkApprenticeships



DIARMUID BRADY

APPLIED INDUSTRIAL
SCIENCE - LIFE
SCIENCES FOUNDATION
DEGREE

HIGHER LEVEL APPRENTICESHIP

The Higher Level Apprenticeship is a great option for so many students. I get paid a wage and have no student debts to worry about, which was a massive selling point. Also, the practical experience working in worldclass industrial labs four days a week is invaluable. I would recommend the Higher Level Apprenticeship route for anyone interested in building a career in science.

| Course Code | Course Title | Location | Day | Start Time | End Time | Start Date | End Date | No. of Wks | Tuition Fee | Concession Fee | Exam/Reg Fee | Materials Fee | Apply/Enrol |
|---------------|---|---------------------|-----------|------------|----------|------------|----------|------------|-------------|----------------|--------------|---------------|-------------|
| MEDIA & MUSIC | | | | | | | | | | | | | |
| P3683AD | CREATIVE MUSIC AND AUDIO PRODUCTION BA (Hons) Degree (Top-Up) * NEW | Armagh Campus | TBC | TBC | TBC | 11/09/23 | 31/05/24 | 32 | £1,178 | N/A | £565 | N/A | Apply |
| P3112SE | ANIMATION Level 3 Award FREE Skill UP | eCampus & Banbridge | Tue | 17:45 | 22:00 | 12/09/23 | 19/03/24 | 24 | FREE | FREE | FREE | FREE | Apply |
| P3203AE | CREATIVE ARTS AND DIGITAL TECHNOLOGIES (RECORDING STUDIO 301) Level 3 Award NEW | Armagh Campus | Thu | 18:30 | 21:00 | 25/01/24 | 07/03/24 | 6 | £35 | £35 | £32 | N/A | Enrol |
| P3204AE | CREATIVE ARTS AND DIGITAL TECHNOLOGIES UNIT (LIVE SOUND 101) Level 2 Award NEW | Armagh Campus | Mon | 18:30 | 21:00 | 25/09/23 | 06/11/23 | 6 | £35 | £35 | £32 | N/A | Enrol |
| P3200AE | CREATIVE ARTS AND DIGITAL TECHNOLOGIES UNIT (RECORDING STUDIO 101) Level 2 Award NEW | Armagh Campus | Mon | 18:30 | 21:00 | 25/09/23 | 06/11/23 | 6 | £35 | £35 | £32 | N/A | Enrol |
| P1971BE | AUDIO VISUAL MEDIA SKILLS - VIDEO PRODUCTION Level 2 Unit | Banbridge Campus | Thu | 18:00 | 21:15 | 09/11/23 | 25/01/24 | 10 | £275 | N/A | £30 | N/A | Enrol |
| MOTOR VEHICLE | | | | | | | | | | | | | |
| P0029PE | ADVANCED AUTOMOTIVE STUDIES Level 4 Certificate * | Portadown Campus | Thu | 18:30 | 21:30 | 14/09/23 | 30/05/24 | 32 | £221 | N/A | £140 | N/A | Apply |
| P2708SP | ELECTRIC/HYBRID VEHICLE SYSTEM REPAIR AND REPLACEMENT Level 3 Award NEW FREE Skill UP | Armagh Campus | Thu & Fri | 09:00 | 17:00 | 28/03/24 | 29/03/24 | 1 | FREE | FREE | FREE | FREE | Apply |
| P2710SP | ELECTRIC/HYBRID VEHICLE SYSTEM REPAIR AND REPLACEMENT Level 3 Award NEW FREE Skill UP | Portadown Campus | Thu & Fri | 09:00 | 17:00 | 25/04/24 | 26/04/24 | 1 | FREE | FREE | FREE | FREE | Apply |
| P2688SP | ELECTRIC/HYBRID VEHICLE ROUTINE MAINTENANCE ACTIVITIES Level 2 Award NEW FREE Skill UP | Armagh Campus | Thu & Fri | 09:00 | 17:00 | 02/11/23 | 03/11/23 | 1 | FREE | FREE | FREE | FREE | Apply |
| P2707SP | ELECTRIC/HYBRID VEHICLE ROUTINE MAINTENANCE ACTIVITIES Level 2 Award NEW FREE Skill UP | Portadown Campus | Thu & Fri | 09:00 | 17:00 | 15/02/24 | 16/02/24 | 1 | FREE | FREE | FREE | FREE | Apply |
| P3835SE | INDUSTRIAL ROBOTICS (PROGRAMMING & APPLICATION) Level 3 NEW FREE Skill UP | Portadown Campus | Thurs | 17:45 | 22:00 | 21/09/23 | 19/01/24 | 15 | FREE | FREE | FREE | FREE | Apply |
| P3998SE | INDUSTRIAL ROBOTICS (PROGRAMMING & APPLICATION) Level 4 NEW FREE Skill UP | Newry Campus | Wed | 17:45 | 22:00 | 20/09/23 | 17/01/24 | 15 | FREE | FREE | FREE | FREE | Apply |
| PHOTOGRAPHY | | | | | | | | | | | | | |
| P2872BE | ART AND DESIGN - PHOTOGRAPHY Level 4 Higher National Certificate * NEW | Banbridge & eCampus | Thu | 09:00 | 17:00 | 14/09/23 | 30/05/24 | 32 | £589 | N/A | £246 | £35 | Apply |
| P0374NE | PHOTOGRAPHY Level 3 Award | Newry Campus | Tue | 19:00 | 21:30 | 18/09/23 | 15/04/24 | 24 | £132 | £66 | £68 | N/A | Apply |
| P0373LE | PHOTOGRAPHY Level 3 Award | Lurgan Campus | Wed | 19:00 | 21:30 | 20/09/23 | 10/04/24 | 24 | £132 | £66 | N/A | N/A | Apply |
| P1954BE | PHOTOGRAPHY Level 3 Certificate | Banbridge Campus | Thu | 18:30 | 21:45 | 05/10/23 | 09/05/24 | 26 | £172 | £86 | £72 | N/A | Apply |
| P0371LE | PHOTOGRAPHY Level 2 Award | Lurgan Campus | Wed | 19:00 | 21:00 | 20/09/23 | 10/04/24 | 24 | £106 | £53 | N/A | N/A | Enrol |
| P0372NE | PHOTOGRAPHY Level 2 Award | Newry Campus | Tue | 19:00 | 21:00 | 26/09/23 | 16/04/24 | 24 | £106 | £53 | N/A | N/A | Enrol |
| P0544AE | PHOTOGRAPHY Recreational | Armagh Campus | Mon | 19:00 | 21:00 | 18/09/23 | 11/12/23 | 12 | £77 | N/A | N/A | N/A | Enrol |
| P0548NE | PHOTOGRAPHY Recreational | Newry Campus | Tue | 19:00 | 21:00 | 19/09/23 | 12/12/23 | 12 | £77 | N/A | N/A | N/A | Enrol |
| P2514BE | PHOTOGRAPHY Recreational NEW | Banbridge Campus | Tue | 19:00 | 21:00 | 26/09/23 | 19/12/23 | 12 | £77 | N/A | N/A | N/A | Enrol |
| P0546LE | PHOTOGRAPHY Recreational | Lurgan Campus | Wed | 19:00 | 21:00 | 27/09/23 | 20/12/23 | 12 | £77 | N/A | N/A | N/A | Enrol |
| P0545AE | PHOTOGRAPHY Recreational | Armagh Campus | Mon | 19:00 | 21:00 | 29/01/24 | 06/05/24 | 12 | £77 | N/A | N/A | N/A | Enrol |
| P2155BE | PHOTOGRAPHY Recreational | Banbridge Campus | Tue | 19:00 | 21:00 | 30/01/24 | 07/05/24 | 12 | £77 | N/A | N/A | N/A | Enrol |
| P0549NE | PHOTOGRAPHY Recreational | Newry Campus | Tue | 19:00 | 21:00 | 30/01/24 | 07/05/24 | 12 | £77 | N/A | N/A | N/A | Enrol |
| P0547LE | PHOTOGRAPHY Recreational | Lurgan Campus | Wed | 19:00 | 21:00 | 31/01/24 | 08/05/24 | 12 | £77 | N/A | N/A | N/A | Enrol |
| SCIENCE | | | | | | | | | | | | | |
| P2890AD | BIOLOGICAL & PHARMACEUTICAL SCIENCE Open University Foundation Degree * NEW | Armagh Campus | Thu | 09:15 | 22:00 | 14/09/23 | 30/05/24 | 32 | £515 | N/A | £565 | N/A | Apply |
| P2464ND | BIOLOGICAL & PHARMACEUTICAL SCIENCE Open University Foundation Degree * NEW | Newry Campus | Tue | 09:15 | 22:00 | 12/09/23 | 28/05/24 | 32 | £515 | N/A | £565 | N/A | Apply |
| P2892PD | BIOLOGICAL & PHARMACEUTICAL SCIENCE Open University Foundation Degree * NEW | Portadown Campus | Wed | 09:15 | 22:00 | 13/09/23 | 29/05/24 | 32 | £515 | N/A | £565 | N/A | Apply |
| P0023ND | APPLIED INDUSTRIAL SCIENCES - CHEMICAL Level 5 Foundation Degree Higher Level Apprenticeship | Newry Campus | Tue | 09:15 | 22:00 | 12/09/23 | 13/08/24 | 42 | FREE | N/A | N/A | N/A | Apply |
| P0024PD | APPLIED INDUSTRIAL SCIENCES - LIFE SCIENCE Level 5 Foundation Degree Higher Level Apprenticeship | Portadown Campus | Wed | 09:15 | 22:00 | 06/09/23 | 14/08/24 | 42 | FREE | N/A | N/A | N/A | Apply |
| P3341SE | REGULATION IN THE PHARMACEUTICAL INDUSTRY: MANUFACTURING AND DISTRIBUTION Level 5 Certificate NEW FREE Skill UP | eCampus | Wed | 17:30 | 21:45 | 03/01/24 | 17/04/24 | 12 | FREE | FREE | FREE | FREE | Apply |
| P3666SE | CHROMATOGRAPHY & SPECTROSCOPY ANALYSIS Level 5 Certificate NEW FREE Skill UP | Newry Campus | Mon | 17:45 | 22:00 | 27/11/23 | 04/03/24 | 12 | FREE | FREE | FREE | FREE | Apply |
| P3340SE | PHARMACEUTICAL INDUSTRY REGULATION Level 4 Certificate NEW FREE Skill UP | eCampus | Wed | 17:30 | 21:45 | 13/09/23 | 06/12/23 | 12 | FREE | FREE | FREE | FREE | Apply |
| P3342SE | LABORATORY SKILLS FOR INDUSTRY Level 4 Certificate NEW FREE Skill UP | Newry Campus | Mon | 18:30 | 21:45 | 02/10/23 | 05/02/24 | 16 | FREE | FREE | FREE | FREE | Apply |
| P3343SE | PHARMACEUTICAL ANALYTICAL QUALITY CONTROL AND ANALYSIS Level 4 Certificate NEW FREE Skill UP | Newry Campus | Tue | 18:30 | 21:45 | 03/10/23 | 06/02/24 | 16 | FREE | FREE | FREE | FREE | Apply |
| P3667SE | APPLIED MATHEMATICS FOR LABORATORY SCIENCE Level 4 Certificate NEW FREE Skill UP | eCampus | Mon | 17:45 | 22:00 | 27/11/23 | 04/03/24 | 12 | FREE | FREE | FREE | FREE | Apply |
| P0911PE | FORENSIC SCIENCE PRACTICAL SKILLS Recreational | Portadown Campus | Tue | 18:00 | 21:15 | 23/01/24 | 27/02/24 | 5 | £48 | N/A | N/A | N/A | Enrol |
| SIGN LANGUAGE | | | | | | | | | | | | | |
| P0912LE | SIGN LANGUAGE Level 1 Award | Lurgan Campus | Tue | 19:00 | 21:00 | 12/09/23 | 14/05/24 | 30 | £132 | £66 | £111 | N/A | Enrol |
| P0913NE | SIGN LANGUAGE Level 1 Award | Newry Campus | Wed | 19:00 | 21:00 | 13/09/23 | 15/05/24 | 30 | £132 | £66 | £111 | N/A | Enrol |
| P3240AE | MAKATON Level 1 Workshop 1 NEW | Armagh Campus | Mon | 19:00 | 21:00 | 22/01/24 | 19/02/24 | 4 | TBC | TBC | TBC | TBC | Enrol |
| P3239NE | MAKATON Level 1 Workshop 1 NEW | Newry Campus | Wed | 19:00 | 21:00 | 28/02/24 | 20/03/24 | 4 | TBC | TBC | TBC | TBC | Enrol |
| P3281AE | MAKATON Level 1 Workshop 2 NEW | Armagh Campus | Mon | 19:00 | 21:00 | 26/02/24 | 18/03/24 | 4 | TBC | TBC | TBC | TBC | Enrol |
| P3280NE | MAKATON Level 1 Workshop 2 NEW | Newry Campus | Wed | 19:00 | 21:00 | 24/01/24 | 21/02/24 | 4 | TBC | TBC | TBC | TBC | Enrol |
| P3284AE | MAKATON Level 2 Workshop 3 NEW | Armagh Campus | Mon | 19:00 | 21:00 | 15/04/24 | 13/05/24 | 4 | TBC | TBC | TBC | TBC | Enrol |
| P3241NE | MAKATON Level 2 Workshop 3 NEW | Newry Campus | Wed | 19:00 | 21:00 | 17/04/24 | 08/05/24 | 4 | TBC | TBC | TBC | TBC | Enrol |
| P3283AE | MAKATON Level 2 Workshop 4 NEW | Armagh Campus | Mon | 19:00 | 21:00 | 26/02/24 | 08/04/24 | 4 | TBC | TBC | TBC | TBC | Enrol |
| P3282NE | MAKATON Level 2 Workshop 4 NEW | Newry Campus | Wed | 19:00 | 21:00 | 15/05/24 | 05/06/24 | 4 | TBC | TBC | TBC | TBC | Enrol |

COURSE KEY

* - Year 1 fee only
** - Module fee only
U - Students required to purchase uniform

K - Students required to purchase kit
E - Exams fee payable
L - Licence fee payable

A - Administration fee payable
e-Campus - course delivered fully online or blended learning (% on campus & % online)



KEVINA BURNS

HEAVY VEHICLE MAINTENANCE & REPAIR PRINCIPLES

LEVEL 3 APPRENTICESHIP

I'm currently studying the Level 3 Heavy Vehicle Maintenance & Repair Principles apprenticeship. I'm studying the course as while I really want to be a lorry driver, it's important to know the basics in lorry repairs. There is no point sitting on the side of the road when you breakdown not knowing what to do.

Going into the workshops and working on lorries has been the best aspect of the course. I've learnt about braking systems and am working up to an engine rebuild.

Being at SRC is so much better than being at school!

| Course Code | Course Title | Location | Day | Start Time | End Time | Start Date | End Date | No. of Wks | Tuition | Concession Fee | Exam/Reg Fee | Materials Fee | Apply/Enrol |
|---------------------------|--|---------------|-----------|------------|----------|------------|----------|------------|---------|----------------|--------------|---------------|-------------|
| SPORT, EXERCISE & FITNESS | | | | | | | | | | | | | |
| P2886ND | SPORT AND EXERCISE BSc (Hons) Degree (Top-Up) * NEW | Newry Campus | Tue | 09:30 | 20:00 | 12/09/23 | 28/05/24 | 32 | £626 | N/A | £565 | N/A | Apply |
| P2888ND | SPORT AND EXERCISE Level 5 Foundation Degree * NEW | Newry Campus | Thu | 09:15 | 21:00 | 14/09/23 | 22/08/24 | 43 | £1,014 | N/A | £565 | N/A | Apply |
| P3047NP | SPORT AND EXERCISE Level 5 Foundation Degree Higher Level Apprenticeship NEW | Newry Campus | Thu | 09:15 | 22:00 | 14/09/23 | 22/08/24 | 43 | FREE | N/A | N/A | N/A | Apply |
| P3669NE | STRENGTH AND CONDITIONING Level 4 Certificate NEW | Newry Campus | Mon & Tue | 18:00 | 22:00 | 11/09/23 | 30/01/24 | 18 | £331 | N/A | £103 | N/A | Apply |
| P3128AE | PERSONAL TRAINING Level 3 Certificate NEW | Armagh Campus | Mon & Thu | 17:45 | 22:00 | 18/09/23 | 10/06/24 | 30 | £528 | £264 | £104 | £35 | Enrol |
| P0394NE | PERSONAL TRAINING Level 3 Certificate | Newry Campus | Mon & Tue | 17:45 | 22:00 | 18/09/23 | 10/06/24 | 30 | £528 | £264 | £100 | £35 | Enrol |
| P0398AE | SPORTS MASSAGE THERAPY Level 3 Diploma | Armagh Campus | Mon & Thu | 18:00 | 21:30 | 18/09/23 | 10/06/24 | 30 | £462 | £231 | £112 | £48 | Enrol |
| P3618NP | SPORTS MASSAGE THERAPY Level 3 Diploma NEW | Newry Campus | Mon - Fri | 09:15 | 16:00 | 10/06/24 | 28/06/24 | 3 | £198 | £99 | £117 | £48 | Enrol |
| P3258NE | USING TECHNOLOGY AND PHYSICAL PREPARATION IN GAELIC SPORTS Level 3 Unit NEW | Newry Campus | Thu | 17:45 | 22:00 | 19/09/23 | 16/01/24 | 15 | £132 | £66 | £68 | N/A | Enrol |
| P0592AP | INSTRUCTING CIRCUIT SESSIONS Level 2 Award | Armagh Campus | Mon & Tue | 09:15 | 17:00 | 12/02/24 | 13/02/24 | 1 | £35 | £35 | £33 | £20 | Enrol |
| P0594LP | INSTRUCTING CIRCUIT SESSIONS Level 2 Award | Lurgan Campus | Wed & Thu | 09:15 | 17:00 | 14/02/24 | 15/02/24 | 1 | £35 | £35 | £33 | £20 | Enrol |
| P0595NP | INSTRUCTING CIRCUIT SESSIONS Level 2 Award | Newry Campus | Wed & Thu | 09:15 | 17:00 | 27/03/24 | 11/04/24 | 1 | £35 | £35 | £33 | £20 | Enrol |
| P0598LP | INSTRUCTING KETTLEBELLS Level 2 Award | Lurgan Campus | Mon & Tue | 09:15 | 17:00 | 12/02/24 | 13/02/24 | 1 | £35 | £35 | £33 | £20 | Enrol |
| P0596AP | INSTRUCTING KETTLEBELLS Level 2 Award | Armagh Campus | Wed & Thu | 09:15 | 17:00 | 14/02/24 | 15/02/24 | 1 | £35 | £35 | £33 | £20 | Enrol |
| P0599NP | INSTRUCTING KETTLEBELLS Level 2 Award | Newry Campus | Mon & Tue | 09:15 | 17:00 | 25/03/24 | 26/03/24 | 1 | £35 | £35 | £33 | £20 | Enrol |
| P3127AE | FITNESS INSTRUCTING Level 2 Certificate NEW | Armagh Campus | Mon & Thu | 17:45 | 22:00 | 19/09/23 | 18/01/24 | 15 | £264 | £132 | £91 | £30 | Enrol |
| P0380NE | FITNESS INSTRUCTING Level 2 Certificate | Newry Campus | Mon | 17:45 | 22:00 | 25/09/23 | 17/06/24 | 30 | £264 | £132 | £87 | £30 | Enrol |
| P0379LE | FITNESS INSTRUCTING Level 2 Certificate | Lurgan Campus | Tue & Wed | 17:45 | 22:00 | 30/01/24 | 12/06/24 | 17 | £299 | £150 | £87 | £30 | Enrol |
| P0601NP | FITNESS INSTRUCTING Level 2 Certificate | Newry Campus | Mon - Fri | 09:15 | 16:00 | 10/06/24 | 28/06/24 | 3 | £198 | £99 | £87 | £20 | Enrol |
| TEACHER TRAINING | | | | | | | | | | | | | |
| P2524NE | ASSESSING VOCATIONAL ACHIEVEMENT Level 3 Certificate NEW | Newry Campus | Tue & Wed | 18:15 | 21:45 | 19/09/23 | 10/04/24 | 24 | £436 | £218 | £98 | N/A | Enrol |
| P0633NE | EDUCATION AND TRAINING Level 3 Award | Newry Campus | Tue | 18:30 | 21:45 | 19/09/23 | 12/03/24 | 22 | £145 | £73 | £68 | N/A | Enrol |
| TOURISM | | | | | | | | | | | | | |
| P3744NP | INTERNATIONAL TRAVEL AND TOURISM Level 4 Higher National Certificate * NEW | Newry Campus | Mon | TBC | TBC | 11/09/23 | 17/06/24 | 32 | £1,030 | N/A | N/A | N/A | APPLY |

COURSE KEY

* - Year 1 fee only

** - Module fee only

U - Students required to purchase uniform

K - Students required to purchase kit

E - Exams fee payable

L - Licence fee payable

A - Administration fee payable

e-Campus - course delivered fully online or blended learning (% on campus & % online)



JAMES SMYTH


CREATIVE MUSIC AND AUDIO PRODUCTION

FOUNDATION DEGREE

The HND Music course is a fantastic course. The course itself is competitive with university courses, as the equipment in the College is fantastic. It's unbelievable – from soundproofing in rooms to mics. The availability of equipment is amazing!

Throughout the course I've been involved in multiple productions, from pantomimes to showcases and gigs externally. We've been taught how to prepare for big productions from considering venue setup, health and safety matters, to marketing and promotion.

I'm hoping to progress onto the top-up degree in Creative Music and Audio Production at the College because the staff are fantastic – it's like being personally tutored! The staff are invested in you and committed to your progression.



JACK MCMURRAY

SPORT & EXERCISE


LEVEL 3 EXTENDED DIPLOMA

The course is the equivalent to 3 A-levels and has prepared me for my future career. You can apply to university with the benefit of a great practical and theory background in sport and exercise or take up paid employment as the course grants you various qualifications that enable you to take up different jobs straight away. With the range of doors it opens, from physical therapy to coaching it will not leave me short of opportunities for a successful career.

Matrix & Autism Accreditation

Whether you need welfare support or advice and guidance, we have experienced teams to help support you every step of the way





ANDREW GRAHAM

GAMES, ANIMATION AND VFX SKILLS

LEVEL 3 EXTENDED DIPLOMA

I'm currently studying the Games, Animation and VFX Skills Level 3 Extended Diploma which is equivalent to 3 A-levels. The course will teach you everything you need to know about developing games for the gaming industry and additional skills such as project management, communication, presentation skills and 3D modelling.

Learning new skills and using different software has been one of the best aspects of studying at SRC. My career aspirations include becoming a programmer which the course facilitates; I'm developing coding basics and learning what it's like to work in industry. The College has really helped me get relevant work experience by organising work experience with gaming development companies. Throughout the course, I am doing things I thought I would never be capable of and making lots of friends along the way.

BUSINESS SUPPORT & INNOVATION

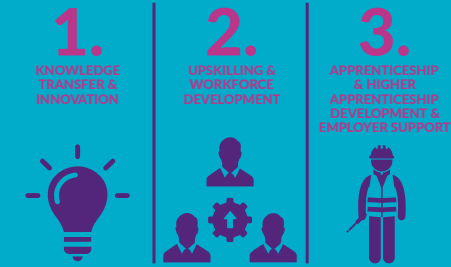
Our Business Support & Innovation Centre plays a key role in identifying and responding to the needs of local businesses and industry. We help companies of all sizes to innovate, compete and grow through the provision of a mix of technical and business know-how, research and development services, skills development and talent acquisition.

We provide support in the core areas of:

- bespoke support for product/service design & development
- technology & knowledge transfer
- one-to-one mentoring & consultancy
- Higher Level Apprenticeships
- customised training & workforce development
- student, graduate & academic placements
- easy access to funded support
- networking & partnership opportunities
- information & publicity

Support is provided under 3 main pillars:

BUSINESS SUPPORT & INNOVATION



Support can be provided through a range of funded initiatives including, DfE InnovateUs, Invest NI Innovation Vouchers, Skills Focus, Flexible Skills Fund – Skill Up, Knowledge Transfer Partnerships, FUSION, Connected and other locally funded pots.

We can help you do better business!

Contact the team today and follow us on social media for all the latest news and opportunities.



betterbusiness@src.ac.uk

028 3025 9664

028 3839 7778

@businessSRC

UPSKILLING AND WORKFORCE DEVELOPMENT

Skills Focus



Skills Focus

Get support to develop the skills of your existing workforce with qualifications at level 2 and above. 100% of training under Skills Focus programmes is subsidised. To qualify, your business must have less than 250 employees and you must be based in Northern Ireland. Depending on the type of course you need, training can be delivered online, on campus or at your premises.



Successful candidates from Rice's Hotel, Donut Face and Armagh Potato Company undertaking the Level 3 Barista qualification.

CLIENT FOCUS: BARISTA TRAINING

The Business Support team provided an OCN NI Level 3 Award in Barista Skills to train employees from local hospitality businesses in the art of coffee making, the roasting process methods and stages, and impact on the extraction and flavour of coffee. Training was provided at a time and location suited to all businesses. Successful candidates now have the highest level Barista qualification in Northern Ireland and are making tasty coffees for customers throughout Northern Ireland.

SKILL UP – Free Training



Skill Up

Skill Up courses are available to individuals who want to increase their chances of promotion or learn a new skill. There are a variety of accredited courses on offer which are available face to face, online, FREE and delivered at various times to fit around your lifestyle. Courses range in ability from Level 2 to Level 5 and will be running at various times throughout the year.

We have courses in the areas:

- Advanced Manufacturing & Engineering
- Digital Skills
- Green Technologies
- Health & Social Care
- Life & Health Science
- Leadership & Management
- Women Returner Programme

APPRENTICESHIP & HIGHER APPRENTICESHIP DEVELOPMENT & EMPLOYER SUPPORT



Apprenticeships and Higher Level Apprenticeships (HLAs) are an exciting option for both the apprentice and the employer. Employers can hire someone new or upskill an existing employee moving into a new job role.

Employers

Hiring an apprentice is a productive and effective way to grow talent and develop a motivated, skilled and qualified workforce. Our specialist HLA team will work with you to identify your requirements and guide you through the next steps of recruiting the right apprentice for your business.

Apprentices

HLA offer a real alternative to university! The programme is funded through the Department for the Economy, allowing it to be offered FREE of charge to you. HLAs combine academic study while learning skills on the job and getting a wage! You will achieve a degree level qualification without paying higher education tuition fees.

By taking part in a HLA, you can gain the skills that employers need and that are relevant to the local economy, therefore improving your prospects of good earnings and career progression.

Check out the HLAs on offer on our website. Courses include Construction, Engineering, Mechatronics, Accounting, Digital Marketing & Communications, Sport & Exercise, Computing, Hospitality plus more!

APPLY NOW:
www.src.ac.uk

#ThinkDifferentlyThinkApprenticeships

TRANSFER KNOWLEDGE & INNOVATION SUPPORT

InnovateUS



InnovateUs

InnovateUs provides up to 60 hours of one-to-one mentoring from an SRC industry specialist to enhance your skills and develop innovation capabilities within your business. This programme offers help with new product, service or process development. It is open to all industries and funded by the Department for the Economy.



Jacqueline Rooney (centre) alongside Business Support and Innovation staff Cathal McDonnell (left) and Kieran Swail (right)

CLIENT FOCUS: JACQUELINE ROONEY ART

Jacqueline Rooney is a local artist with her own gallery located in Rostrevor. Jacqueline sought to incorporate 360 cameras and AR Technologies into her online presence to increase awareness of the gallery and ultimately increase sales. The Business Support team developed a 360 interactive tour with ecommerce touch points added to allow sales of products. This increased online awareness of the gallery and click through rates to the website, plus in person footfall.

Jacqueline commented:

“The Business Support team have been incredible in the delivery of this forward thinking project. Their personable approach and expertise has been so inspiring. I am excited to see how these innovative ideas will help my business evolve.”

Innovation Voucher

An Innovation voucher offers up to 62 hours of technical expertise from the Business Support team to support innovation activity and bring a new product to market. The project is open to all industries, except transport and agriculture and is funded by Invest NI.



CLIENT FOCUS – KARRI KITCHEN

Karri Kitchen is an award winning healthy ready meal company focusing on South East Asian inspired dishes. The business sought assistance with upscaling manufacturing to support business growth plans. The Business Support team put in place a bespoke growth plan with recipes reviewed, developed and tweaked to ensure correct nutritional and calorie composition. This ensured Karri Kitchen was successful in the market scaling up process. Karri Kitchen's product range now reaches the large grocery stores of Aldi and Lidl.



Portadown students participating in a virtual work placement with Splash Damage

Students up their game

Over 30 gaming students undertook a week-long virtual work placement for Splash Damage, a multiplayer video game developer. Students under the guidance of industry mentors developed gaming concepts before the 'big pitch' to peers. Afterwards, plans were put into action and

gaming prototypes developed for final presentation to Splash Damage.

The College partnered up with Into Games, a national simulated work experience for UK games students to provide a glimpse into what it is like to work in a real game studio.

Hannah McArdle, Lecturer at Southern Regional College commented:

“ Students studying on the HND Games Development and Level 3 Games, Animation and VFX courses at Southern Regional embarked on Production Workspace training, which focusses on the day-to-day production cycles of game development.

Students collaborated with Into Games and non-other than Splash Damage, a UK based game development company where they developed skills such as, idea generation, communication, adaptability and presentation skills. This offered students a glimpse into what it's like to work in a real gaming studio. **”**



Boosting Tourism using Digital Technology

Over 40 local businesses attended an event at Southern Regional College's state of the art Banbridge campus to hear how available digital facilities can increase regional tourism. Armagh, Banbridge and Craigavon Borough Council Lord Mayor, Paul Greenfield opened the event, with participants hearing from prominent

tourism experts Alan Hamilton from Brilliant Trails, and Kieran Swail and Cathal McDonnell from SRC's Business Support team.

Alan spoke of how technology has been successfully deployed to promote tourism at local cultural sites, followed by inspiration from Kieran and Cathal. Both men are leading digital tourism specialists, whose use of technology has successfully played a key role in tourism development. Facilities available at the Banbridge campus include a green room, sound booths and first-class photography studio.

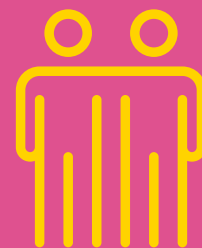
SRC can assist with digital projects, with funding available from the Department of Economy's InnovateUs Programme. To speak with an Innovation Specialist, contact the team on 028 3025 9664.

Active in the Community

We work with over

90

community and voluntary groups to offer our courses right in the heart of local communities



NI TRAINEESHIPS: THE PERFECT PATHWAY TO SUCCESS

Completing your GCSEs? Need a career change? Look no further than our Traineeships at Level 2.

Aimed at both school leavers and adults who aspire to work within a specific sector, Traineeships will give you the skills and qualifications necessary to secure employment in a chosen occupation.

All our Traineeships have been developed alongside employers, ensuring that what you learn, and the skills you develop, are what employers need.

Following successful completion, you can progress to an apprenticeship at level 3 or alternatively into further education at level 3. Or you can go straight into employment.

Key elements of NI Traineeship:

- A vocational qualification
- Literacy and numeracy qualifications at level 2 (may include GCSE qualifications in English and Mathematics)
- Additional qualifications deemed necessary for work within a sector e.g. Construction Skills Register, Health & Safety
- Development of Transversal Skills e.g. teamwork, communication
- Project Based Learning

At Southern Regional College we offer Traineeships in:

- Agriculture
- Brickwork
- Butchery
- Carpentry and Joinery
- Children's Care Learning & Development
- Engineering
- Floor and Wall Tiling
- Hairdressing
- Health and Social Care
- Hospitality & Tourism Team Member
- Information Technology
- Motor Vehicle - Light Vehicle
- Motor Vehicle - Heavy Vehicle
- Motor Vehicle - Body Repair
- Motor Vehicle - Paint Refinishing
- Motor Vehicle - Vehicle Fitting
- Painting and Decorating
- Plumbing and Heating
- Plastering and Dry Wall Lining
- Professional Chef
- Retail

APPLY TODAY ON OUR WEBSITE!

SUPPORTING YOUR FUTURE SUCCESS

Our Careers Service is here to help

The Southern Regional College Careers team is dedicated to providing information, advice, and support to help you plan and achieve your next step. The right advice will enable you to make decisions about your learning, training, and work opportunities. Our experienced and qualified team will help you by:

- Delivering impartial, informed and accurate information.
- Providing a supportive, friendly and confidential service to all users.
- Developing students' employability skills

- skills and personal attributes that make you more likely to get a job.

The Careers team supports students throughout their time at the College and can help with the following:

- Pre-entry advice and guidance on course options and entry requirements.
- Exploring career options - it isn't always easy making big decisions, which ultimately affect your future. The team will help you identify your ambitions and explore career paths best suited to your skills, attributes, qualifications, and goals.
- Application forms - completing application forms for college, university, or employment accurately and on time.
- Changing course - sometimes things don't go to plan and that's ok! It's important to act if you aren't happy with your course or if you change your mind. The team will work with you to explore

alternative options to get you back on track

- CV help and advice.
- Interview preparation - preparation is key to presenting yourself confidently at interview, whether for university or employment.
- Higher education - lots of our student's progress to higher education at SRC or other colleges or universities across Ireland, the UK and sometimes further afield.

Meet the Team

You are welcome to 'drop-in' to have a chat, or for more specific careers support and guidance, you are advised to make an appointment with a member of the team. Evening appointments can also be arranged.

Details on how to contact our Careers Service can be found on our website at <https://www.src.ac.uk/student-life/student-support/careers-advice>.

Great Careers Start Here

Affordable Fees

~~£9,000~~ → **£2,700**

We have extremely competitive higher education fees - £2,700 per year compared to up to £9,000 per year at university. Many of our higher education qualifications are accredited by local universities.

STEM Assured

STEM Assured Status ensures our STEM provision is innovative, wide-ranging and relevant to the needs of local business and industry. We boast highly experienced and skilled professional staff across a broad range of subject areas.



Royal Society of Chemistry Accreditation

This accreditation was received for the College's Higher-Level Apprenticeships (HLAs) in Applied Industrial Science, both Life Science and Chemical pathways.



Brian Doran, Chief Executive and CEO of Southern Regional College showcasing the award winning "Doran, Doran" cocktail

Shaken Not Stirred

This time it was the staff at Southern Regional College (SRC) who were placed under the examination spotlight! With the launch of the new OCN Level 2 and 3 Awards in Cocktail Making, Chief Executive Brian Doran together with Directors, Raymond Sloan and Libby Shackels, were pitted against each other in a competition to see who could compose an award-winning cocktail.

All three competitors were carefully tutored in the art of cocktail making by external hospitality venues Killeavy Castle Estate, Newry, The Whistledown Hotel, Warrenpoint and The Canal Court Hotel & Spa, Newry.

All three hospitality venues put the contestants through their paces to ensure cocktail quality and composition was impressive. They did not get away lightly in the final examination exhibit, as many hospitality industry professionals attended the final examination event held in SRC's Graduate Restaurant in Newry. All three competitors prepared a gin-based cocktail with various other ingredients specific to each hospitality venue.

Following voting and result verification, Brian's "Doran Doran" cocktail was evidently a crowd pleaser as it was announced the victorious cocktail.

The event was organised to mark the launch of SRC's OCN Level 2 and 3 Awards in Cocktail Making. These qualifications are aimed at upskilling hospitality businesses and people working within the hospitality industry.



Former SRC Student Wins Top Dental Award

Gemma Forsythe, a former SRC Student, who studied the NEBDN National Diploma in Dental Nursing at Portadown Campus was awarded 'The Most Invaluable Team Member' at the Irish Dentistry Awards 2022.

Gemma works in Magee Dental Care in Lurgan and as well as being a dental nurse, is also a qualified Oral Health Educator promoting good oral hygiene and healthy eating habits to numerous sectors. As well as both jobs, she publishes her own monthly column covering all things dental nursing within Dentistry.co.uk.

ADVANCED TECHNICAL AWARDS

What is an AdvancedTech?

AdvancedTechs are a new level 3 award (equivalent to 3 A-Levels). A bit like a BTEC, however packing a bigger punch! AdvancedTechs offer additional qualifications and skills on top of BTECs – making you more qualified than ever before!

Why choose an AdvancedTech?

Designed with employers, you will gain skills that prepare you for work, further training, or study. You will learn 'transversal' skills that

will prepare you to enter employment and adapt to workplace demands. You will get the competitive edge over your peers.

What do I get?

- A knowledge-based qualification equating to 3 A-Levels (normally a Level 3 BTEC Extended Diploma)
- Focus on one specific subject area
- Experience with an employer to develop practical and technical skills
- Active and engaging learning through real world, industry focused projects

What support is available?

As a full-time level 3 student you may be entitled to:

- Education Maintenance Allowance (EMA) (means tested)
- Further Education Grant

(means tested, non-repayable)

- Hardship Fund (eligibility applies)
- Online Learning Equipment (if necessary)
- Health and Safety or Personal Protective Equipment (PPE)
- Travel/Bus Pass (restrictions apply)
- Free School Meals (means tested)
- Pastoral Care

What AdvancedTechs do SRC offer?

- Applied Science
- Business
- Construction & the Built Environment
- Engineering
- Health & Social Care
- Information Technology

INFO EVENING SESSIONS

CLEARING DAY

01/09/2023

ALL FE/APP NI/TRINEESHIP FULL-TIME CLASSES COMMENCE

04/09/2023

HIGHER EDUCATION FULL-TIME & PART-TIME CLASSES COMMENCE

11/09/2023

What Should I bring?

- Evidence of previous qualifications/pre requisite qualifications (if applicable)
- Evidence of benefits to avail of concession fee (if applicable)
- Cash/Credit/Debit Card or Cheque to pay fees
- Completed EF1 Form if employer is paying fees
- Evidence of previously completed projects (Photography/Art only)

In accordance with the Consumer Rights Act 2015, you will be notified of any such changes, the reasons for the changes and any options available to you to avoid such changes having an adverse impact on your future career. All higher education students and applicants should refer to the Consumer Protection page within the Higher Education section of our website: <https://www.src.ac.uk/about-us/policies>



GRADUATE OPPORTUNITIES IN CYBER, CLOUD AND DATA ANALYTICS

Get an accredited qualification in a sought after area!

- 21 week programme
- Starting on 2nd October 2023
- Delivered on SRC's Portadown Campus Monday – Friday 9.15am - 1.45pm
- £150 weekly allowance plus childcare and travel if required*

DON'T MISS OUT! APPLY NOW!



Scan the QR code to apply

Entry requirements apply:

- Level 4 qualification in any discipline
- Age 18+
- Be eligible to work in Northern Ireland
- Residency status – check out requirements via application link

*Terms and conditions apply

SKILLS TO SUCCEED

SKILL UP THE FLEXIBLE SKILLS FUND

Business Support & Innovation



Northern Ireland Office



Department for the Economy
www.economy-ni.gov.uk

GAIN A RECOGNISED QUALIFICATION FOR FREE

Are you over 18? Do you want to learn a new skill or improve an existing skill? If so, then a **FREE** Skill Up course could be the option for you!

If you are already in employment and want to increase your chances of promotion, learn a new skill, or apply for a new job, there are a variety of accredited courses which are available online, free, and delivered in the evening to fit around your lifestyle.

If you are unemployed or economically inactive, and want to increase your chances of gaining employment, then this is your opportunity to gain a recognised qualification for **FREE**.

The Skill Up - Flexible Skills Fund has been established to help upskill and reskill individuals to meet the needs of the economy. SRC offers a wide range of short courses, all of which are fully funded by the Department for the Economy and you will gain a recognised qualification.

Courses range in ability from level 2 to level 5. Please see Skill Up course listings in this newspaper for detail on all courses offered through this programme. Skill up courses are **free**, **short**, and you gain a **recognised qualification**.

Eligibility for Skill Up Courses

- Must be at least 18 years old on or before course start date
- Must be eligible to work in Northern Ireland
- Must be settled in Northern Ireland and have been ordinarily a resident in the UK For at least 3 years, or a person who has indefinite leave to enter or remain in the UK
- Candidates are only permitted to complete a maximum of 2 free courses at a time

Subjects

We offer Skill Up courses in the areas of Advanced Manufacturing & Engineering, Digital Skills, Green Technologies, Health & Social Care, Life & Health Science, Leadership & Management and Women Returner Programmes.

Email skillup@src.ac.uk for further information.

Apply

You can apply for any of the Skill Up courses online at www.src.ac.uk

COMMUNITY ENROLMENT SESSIONS

ARMAGH, SOUTH ARMAGH & RURAL AREA

Contact Heather Kavanagh
T: 0300 123 1223 M: 077 3633 6152
E: kavanaghh@src.ac.uk

Crossmaglen Community Centre
Thursday, 7 Sept 10am-11am
Ti Chullain, Mullaghbawn
Monday, 11 Sept 10am-11am
WALD Centre Cullyhanna
Thursday, 14 Sept, 6:30pm-7:30pm

NEWRY & SOUTH DOWN

Contact Lesley Hamilton
T: 0300 123 1223 M: 078 4110 2846
E: hamiltonl@src.ac.uk

Nautilus Centre, Kilkeel
Tuesday, 5 Sept, 6:30pm-7:15pm
Newry Street Unite, Kilkeel
Tuesday, 5 Sept, 7:30pm-8:15pm
Rathfriland Hub
Wednesday, 6 Sept, 2pm-3pm
GLM Hall, Mountnorris
Wednesday, 13 Sept, 6:30pm-7:30pm

BANBRIDGE & RURAL AREA

Contact Jim Cunningham
T: 0300 123 1223 M: 077 1198 1732
E: cunninghamj@src.ac.uk

Rathfriland Regeneration Hub
Tuesday, 5 Sept, 6:30pm-8pm

CRAIGAVON & RURAL AREA

Contact Jim Cunningham
T: 0300 123 1223 M: 077 1198 1732
E: cunninghamj@src.ac.uk

BROWNLOW

Chrysalis Women's Centre
Monday, 11 Sept, 10:30am-11:30am
Drumellan Family Learning Centre
Tuesday, 12 Sept, 6pm-7pm

LURGAN

Aghalee Village Hall
Tuesday, 5 Sept, 12pm-1pm
North Lurgan Community Centre
Friday, 15 Sept, 1pm-2pm

PORTADOWN

Regenerate Centre, Rectory Park
Wednesday, 6 Sept, 6:30pm-7:30pm