

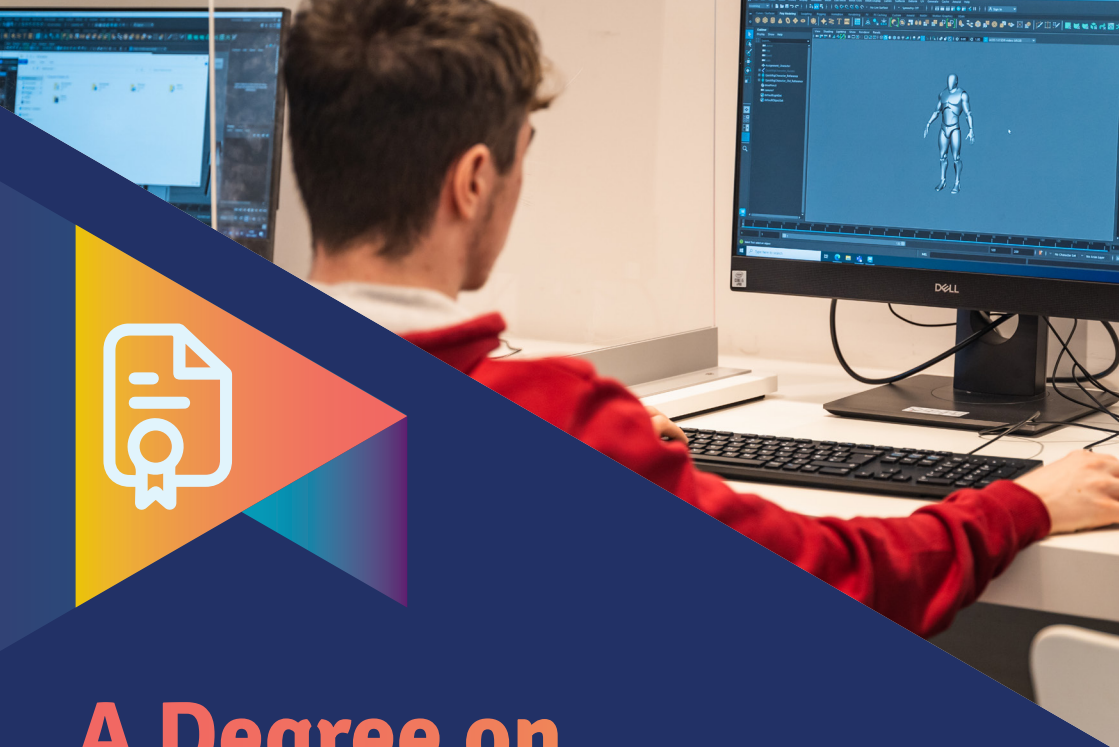


Discover the Benefits of

Higher Education at Southern Regional College



src Southern
Regional
College



A Degree on Your Doorstep

Southern Regional College is more than just a local college. It is a place where you can achieve your academic goals, develop your personal and professional skills, and prepare for a successful career. Whether you are interested in business, engineering, health, cloud computing, sports or management, we have a range of courses to suit your needs and interests.

Reasons to choose Higher Education at SRC



Save thousands every year on tuition fees compared to equivalent university qualifications. Our full-time tuition fees are £2,900* per year compared to fees of £9,250 per year at many universities.



Enjoy small class sizes and high-quality teaching from professional lecturers dedicated to supporting you throughout your studies.



Benefit from our strong partnerships with prestigious universities such as Ulster University, Queen's University Belfast, Open University and Liverpool John Moores University.



Study in our modern state-of-the-art campuses that offer the latest technology and equipment.



Take advantage of our international travel opportunities. Explore different cultures and perspectives through study visits and residential trips.



Receive excellent pastoral and tutorial support from our friendly and experienced staff who are always ready to help you with issues or concerns.



Get skilled and impartial careers guidance and support from our careers advisers to help with your next steps.

**Don't miss
this opportunity
to get a degree
on your doorstep**

Explore Higher Education at Southern Regional College today and see what we can offer you!

*£2,900 per year in 2024/25 – may be subject to change in future years.



Higher Level Apprenticeships

The Alternative Route to University

What is it?

Higher Level Apprenticeships (HLA) are a full-time job that includes studying. You can achieve a degree or foundation degree while undertaking paid, on the job training.

Suitable for school leavers or adult returners there really is no age limit to being a higher level apprentice. All you need is a desire to develop skills and qualifications at a higher level while gaining hands on experience. Apprentices will spend 4 days per week in the workplace and 1 day per week in College.

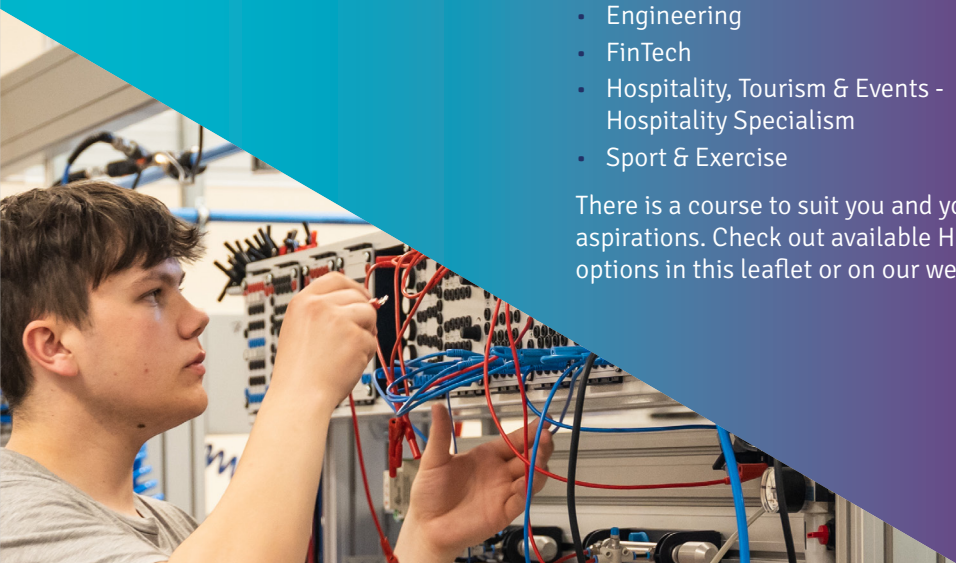
The best bit about a Higher Level Apprenticeship is that your tuition fees are covered by the Department for the Economy, so it's 'win, win' all round – relevant job experience, plus a wage and no tuition fees.

Subjects Offered

SRC currently offer 18 HLA's in a diverse range of areas including;

- Accounting
- Applied Industrial Sciences - Life or Chemical Science Pathway
- Cloud Computing, Analytics & Security
- Computing
- Construction (Digital Construction Management)
- Construction (Quantity Surveying)
- Construction
- Digital Marketing, Advertising & Communications
- Engineering (Electrical & Electronic)
- Engineering (Mechatronics)
- Engineering (Technical Design & Manufacture)
- Engineering
- FinTech
- Hospitality, Tourism & Events - Hospitality Specialism
- Sport & Exercise

There is a course to suit you and your aspirations. Check out available HLA options in this leaflet or on our website.





Money Matters

Higher Education Fees

Education doesn't have to be expensive. We'll let you into a secret – our degree fees are less than university equivalents. So, you'll graduate with the same qualification, but without all the debt.

Your course might be made up of tuition fees and associated costs, like uniform costs or exam and awarding body fees. We're upfront about this as no one wants a surprise - any additional fees are set out on our individual course pages.

Tuition Fees

Full-time Students

Tuition fees for HE full-time courses are specified by the Department for the Economy (DfE) and are currently £2,900* per year. Fees may be changed by DfE, and if this happens, we'll publish updates on our website as soon as possible.

Full fees must be paid on enrolment, unless you're in receipt of an 'Award Notice' from Student Finance. Any fees paid, but subsequently funded by loans from the Student Loans Company or grants from the Education Authority will be refunded to you.

Get ahead and make your application to Student Finance now to find out what support is available.

Apply to Student Finance now at:

www.studentfinanceni.co.uk

Tuition Fees

Part-time Students

Fees for HE part-time students are calculated on an hourly rate. You'll find this information on individual course pages on our website.

If you are not eligible for Student Finance NI support, you will need to pay full course fees at the time of enrolment. However, if you find it difficult to pay full fees at enrolment, we can set up a flexible instalment plan with you.

If you are applying for Student Finance NI support, you must provide evidence of your application and pay either the higher of £100 or 25% of the full fee at enrolment.

Apply to Student Finance now at:

www.studentfinanceni.co.uk

*£2,900 per year in 2024/25 – may be subject to change in future years.

Financial Assistance

We understand that you might want to talk about financial help to study. If you need any advice, speak with one of our Campus Coordinators on

☎ **0300 123 1223** or by making an appointment at any campus reception.

Information on financial assistance is also available on our website.

Support you could avail of:

Full-time Students

- **Undergraduate Tuition Fee Loan** – loans are not means tested but you will have to repay the loan once future earnings go past a limit.
- **Maintenance Grant** – help with living and study costs. Grants are means tested and will vary depending on household income. Grants are not repayable.
- **Maintenance Loan** – the amount received varies depending on whether you live at home or not. If you're in receipt of a Maintenance Grant, the amount of Maintenance Loan you'll receive will be lower.
- **Students with Dependents** – get an allowance if your child is being looked after by a registered childminder.

Part-time Students

- **Undergraduate Tuition Fee Loan** – loans are not means tested but you will have to repay the loan once future earnings go past a limit. If you hold an equivalent or higher qualification, you won't be eligible for a part-time fee loan.
- **Tuition Fee Grant** – get help with course fees. Amounts can vary and are means tested. Grants are not repayable.
- **Course Grant** – help with course related expenses, such as books and travel. Grants are means tested, but not repayable.

All Students

- **Hardship fund** – all HE students in hardship and in need of extra financial support can apply for assistance.
- **Disabled Students' Allowance (DSA)** – all students with a disability, mental health condition or specific learning difficulty can apply through Student Finance for equipment costs or services that you need to complete your course. Apply for DSA through Student Finance before your course starts or your place is confirmed, as it's a lengthy process.



Apply Now



Disclaimer

SRC strives to provide accurate and up-to-date information. While every effort has been made to ensure its accuracy at the time of printing, the College cannot be held responsible for any changes that may occur afterwards.

For Higher Education courses, any significant changes will be communicated to the affected students. Tuition fees for Higher Education have been calculated based on the Fees Policy 2024/25, and University examination fees for 2024/25. Some examination fees were not available at time of printing. Fees may be subject to potential changes determined by the College or University. Other fees related to Higher Education courses are included but may also be subject to change.

The College reserves the right to revise, alter, or cancel courses once they have started. The availability of courses depends on satisfactory enrolment numbers and funding availability.

Students enrolled on courses consisting of 120 hours or more, have the right to cancel their course without incurring any fees within 14 calendar days of the course start date.

No refunds are available for students who leave a part-time course of less than 120 hours after attending one or more sessions.

©2024 Southern Regional College.



Embrace Student Life at SRC

Jump straight into student life and discover opportunities to meet other students, build your confidence and develop employability skills. Here at SRC we offer a vibrant mixture of social, cultural and sporting activities alongside studying.

Here are some of the ways you can get involved:



Freshers' Fair

Find out about student events happening, College teams and getting involved in the Students' Union.



Student Consultative Groups/ Student Council

Your voice on campus. Be your class representative and influence policies, decisions and provide feedback. It is YOUR education after all.



Students' Union

Champion your interests and amplify your views. Run for office in our elections and become a candidate for positive change. Or perhaps run for Student Union President and sit on the Board of Governors.



Clubs and Societies

We have a wide range of options to suit every interest. From LGBTQ+ Society to Movie Club, Gamers Club to Women's Society, or perhaps promote sustainability with the "My World, My Home" group, or contribute to charity fundraising efforts.

Embrace diversity and inclusion with the Cultural Diversity and

Inclusion Council. Become a Campus Mental Health Champion and make a difference.



Health and Wellbeing

Your well being matters. We provide health education, fitness suites, physical activity days, counselling services, and life skills/resilience workshops to support you.



Visits

Embark on exciting visits throughout the year, from College exchanges to activity day trips. Broaden your horizons and make lasting memories.



Fundraising

We're passionate about giving back to the community and want you to be part of the change. Share your ideas and let's make a difference together.



Exhibitions and Shows

Experience the creativity of your fellow students through captivating exhibitions and shows. From Art and Design, Catering, Hairdressing, Media, Music, Trades and Visual Arts.

Let's make your College journey unforgettable. SRC student life awaits you!

Contact: **Jason Brennan**, Student Engagement Manager

📞 075 1777 8329 ✉️ brennanj@src.ac.uk

Higher Education Courses 2024/25

Course Title	Awarding/ Accrediting Org	Mode of Instruction	Duration	Campus	Main Entry Criteria	GCSE Maths	GCSE English
ACCOUNTING							
ACCOUNTING TECHNOLOGY Level 6 (Hons) Degree Higher Level Apprenticeship	The Open University/Accounting Technicians Ireland	HLA	1 year	Newry	ATI Level 5 Accounting Technicians	B	C
ACCOUNTING TECHNICIANS Level 5 Diploma Higher Level Apprenticeship	Accounting Technicians Ireland	HLA	2 years	Newry	96 UCAS points	B	C
ACCOUNTING TECHNICIANS Level 5 Diploma - Daytime	Accounting Technicians Ireland	Part-time (day)	2 years	Newry	Min 1 A Level or 2 A-S-Levels	C	C
ACCOUNTING TECHNICIANS Level 5 Diploma - Evening	Accounting Technicians Ireland	Part-time (evening)	2 years	Newry & Portadown	Min 1 A Level or 2 A-S-Levels	C	C
ART & DESIGN							
ART AND DESIGN - GRAPHIC DESIGN Level 5 Higher National Diploma	Pearson	Part-time (Evening)	2 years	Barndridge	48 UCAS points	C	C
BUSINESS, FINANCE & MARKETING							
BUSINESS STUDIES BSc (Hons) Level 6 Degree with Ulster University	Ulster University	Part-time	3 years	Newry	Level 5 Foundation Degree or HND in Business discipline	C	C
DIGITAL MARKETING, ADVERTISING AND COMMUNICATIONS Level 6 (Hons) Degree Higher Level Apprenticeship (Top-Up)	The Open University	HLA	1 year	Barndridge & Newry	Level 5 in Digital Marketing, Advertising and Communications	C	C
BUSINESS LEVEL 5 Higher National Diploma	Pearson	Full-time	2 years	Arragh & Newry	48 UCAS points	C	C
DIGITAL MARKETING, ADVERTISING AND COMMUNICATIONS Level 5 Foundation Degree	The Open University	Part-time	3 years	Barndridge	48 UCAS points	C	C
DIGITAL MARKETING, ADVERTISING AND COMMUNICATIONS Level 5 Foundation Degree Higher Level Apprenticeship	The Open University	HLA	2 years	Barndridge & Newry	48 UCAS points	C	C
FINTECH Level 5 Foundation Degree	Ulster University	Part-time	3 years	Newry	64 UCAS points	C	C
FINTECH Level 5 Foundation Degree Higher Level Apprenticeship	Ulster University	HLA	3 years	Newry	64 UCAS points	C	C
CHILDCARE							
EARLY CHILDHOOD STUDIES BA (Hons) Degree*	Queen's University Belfast	Part-time	3 years	Newry	Level 5 in Early Childhood Studies from QUB	C	C
EARLY CHILDHOOD STUDIES Level 5 Foundation Degree	Queen's University Belfast	Part-time	3 years	Newry	64 UCAS points to include 2 A-Level/grade CC	C	C
EARLY CHILDHOOD STUDIES Level 5 Foundation Degree**	Queen's University Belfast	Full-time	2 years	Newry	64 UCAS points to include 2 A-Level/grade CC	C	C
LEADERSHIP FOR CHILDREN'S CARE LEARNING AND DEVELOPMENT (MANAGEMENT) Level 5 Diploma	CACHE	Part-time	2 years	Newry	Level 3 Diploma in Childcare and Education or equivalent & employed in management role in early years setting	N/A	N/A
COMPUTING							
COMPUTING FOR INDUSTRY BSc (Hons) Level 6 Degree (Top-Up)	The Open University	Part-time	2 years	Arragh & Portadown	Level 5 in Computing discipline with a pass mark of at least 55%	C	C
COMPUTING FOR INDUSTRY BSc (Hons) Level 6 Degree (Top-Up) Higher Level Apprenticeship	The Open University	HLA	2 years	Portadown	Level 5 in Computing discipline with a pass mark of at least 55%	C	C
COMPUTING Level 5 Foundation Degree in Science	Ulster University	Full-time	2 years	Newry & Portadown	48 UCAS points	C	C
CLOUD COMPUTING, ANALYTICS AND SECURITY FOR INDUSTRY Level 5 Foundation Degree Higher Level Apprenticeship	The Open University	HLA	3 years	Newry & Portadown	48 UCAS points	C	C
CLOUD COMPUTING, ANALYTICS AND SECURITY FOR INDUSTRY Level 5 Foundation Degree	The Open University	Part-time	3 years	Newry & Portadown	48 UCAS points	C	C
PRINCIPLES OF CLOUD COMPUTING Level 5 Certificate	OCN NI	Part-time	16 weeks	Portadown	At least 5 GCSEs including Maths, English and ICT (grade C or above)	C	C
CONSTRUCTION							
CONSTRUCTION BSc (Hons) Level 6 Degree (Top-Up)	The Open University	Part-time	2 years	Newry	Level 5 in Construction discipline with a pass mark of at least 55%	C	C
CONSTRUCTION BSc (Hons) Level 6 Degree (Top-Up) Higher Level Apprenticeship	The Open University	Full-time	2 years	Portadown	Level 5 in Construction discipline with a pass mark of at least 55%	C	C
CONSTRUCTION (DIGITAL CONSTRUCTION MANAGEMENT) Level 5 Foundation Degree	The Open University	Part-time	3 years	Newry	48 UCAS points to include a minimum of 1 A2 subject	C	C
CONSTRUCTION (DIGITAL CONSTRUCTION MANAGEMENT) Level 5 Foundation Degree Higher Level Apprenticeship	The Open University	HLA	3 years	Newry	48 UCAS points to include a minimum of 1 A2 subject	C	C
CONSTRUCTION (QUANTITY SURVEYING) Level 5 Foundation Degree	The Open University	Part-time	3 years	Newry	48 UCAS points to include a minimum of 1 A2 subject	C	C
CONSTRUCTION (QUANTITY SURVEYING) Level 5 Foundation Degree Higher Level Apprenticeship	The Open University	HLA	3 years	Newry	48 UCAS points to include a minimum of 1 A2 subject	C	C
COLLABORATION IN BUILDING INFORMATION, MODELLING/MANAGEMENT Level 4 Certificate	OCN NI and QAA	Part-time	1 year	Newry	CAD or 3D modelling experience	N/A	N/A
3D BUILDING MODELLING USING REVIT Level 4 Certificate	OCN NI	Part-time	12 weeks	Newry	CAD or 3D modelling experience	N/A	N/A
COUNSELLING							
COUNSELLING CHILDREN & YOUNG PEOPLE Level 5 Diploma	CPCAB	Part-time	1 year	Newry	UU Level 5 Foundation Degree in Integrative Counselling, CPCAB Level 4 in Therapeutic Counselling or equivalent	N/A	C
INTEGRATIVE COUNSELLING Level 5 Foundation Degree	Ulster University/ National Counselling Society	Part-time	3 years	Newry	Please see website	C	C
COUNSELLING STUDIES Level 4 Certificate	Ulster University/ National Counselling Society	Part-time	1 year	Barndridge & Newry	5 GCSEs (Grade C or above)	N/A	C
ENGINEERING							
ENGINEERING BEng (Hons) Level 6 Degree (Top-Up)	The Open University	Part-time	2 years	Newry	Level 5 in Engineering discipline with a pass mark of at least 55%	C	C
ENGINEERING BEng (Hons) Level 6 Degree (Top-Up) Higher Level Apprenticeship	The Open University	HLA	2 years	Newry	Level 5 in Engineering discipline with a pass mark of at least 55%	C	C
ENGINEERING (ELECTRICAL & ELECTRONIC) Level 5 Foundation Degree	The Open University	Part-time	3 years	Newry	56 UCAS points to include a minimum of 1 A2 subject	C	C
ENGINEERING (ELECTRICAL & ELECTRONIC) Level 5 Foundation Degree Higher Level Apprenticeship	The Open University	HLA	3 years	Newry	56 UCAS points to include a minimum of 1 A2 subject	C	C
ENGINEERING (MECHANICAL) Level 5 Foundation Degree	The Open University	Part-time	3 years	Portadown	56 UCAS points to include a minimum of 1 A2 subject	C	C
ENGINEERING (MECHANICAL) Level 5 Foundation Degree Higher Level Apprenticeship	The Open University	HLA	3 years	Portadown	56 UCAS points to include a minimum of 1 A2 subject	C	C
ENGINEERING (TECHNICAL DESIGN & MANUFACTURE) Level 5 Foundation Degree	The Open University	Part-time	3 years	Newry	56 UCAS points to include a minimum of 1 A2 subject	C	C
ENGINEERING (TECHNICAL DESIGN & MANUFACTURE) Level 5 Foundation Degree Higher Level Apprenticeship	The Open University	HLA	3 years	Newry	56 UCAS points to include a minimum of 1 A2 subject	C	C
GAMES DEVELOPMENT							
GAME DEVELOPMENT Level 5 Higher National Diploma	Pearson	Full-time	2 years	Newry	48 UCAS points	C	C
HAIR & BEAUTY							
HAIR AND BEAUTY MANAGEMENT Level 5 Extended Diploma	OCN NI	Part-time	2 years	Newry	Level 3 in Hairdressing, Barbering or Beauty Therapy	C	C
HEALTHCARE							
LEADERSHIP FOR HEALTH AND SOCIAL CARE SERVICES (ADULTS MANAGEMENT) Level 5 Diploma	CACHE	Part-time	2 years	Barndridge	Level 3 Diploma in Health & Social Care and employed in a management role in health and social care setting	N/A	N/A
HEALTH AND SOCIAL CARE Level 5 Foundation Degree	Ulster University	Full-time	2 years	Barndridge & Newry	48 UCAS points	C	C
CERTIFICATE OF HIGHER EDUCATION IN HEALTHCARE PRACTICE (NURSING HOME PATHWAY) Level 4	The Open University	Full-time	1 year	Lurgan	15 points at Level 2 and additional (see website)	C	C
CERTIFICATE OF HIGHER EDUCATION IN HEALTHCARE PRACTICE (CHSCT PATHWAY) Level 4	The Open University	Full-time	1 year	Lurgan & Newry	15 points at Level 2 and additional (see website)	C	C
HEALTHCARE PRACTICE Level 4 Higher National Certificate	Pearson	Part-time	4 years	Arragh & Newry	48 UCAS points	C	C
HOSPITALITY & TOURISM							
HOSPITALITY, TOURISM AND EVENTS WITH SPECIALISMS - CULINARY ARTS Level 5 Foundation Degree	Ulster University	Part-time	3 years	Newry	64 UCAS points	C	C
HOSPITALITY, TOURISM AND EVENTS WITH SPECIALISMS - HOSPITALITY Level 5 Foundation Degree	Ulster University	Part-time	3 years	Newry	64 UCAS points	C	C
HOSPITALITY, TOURISM AND EVENTS WITH SPECIALISMS - TOURISM Level 5 Foundation Degree	Ulster University	Part-time	3 years	Newry	64 UCAS points	C	C
HOSPITALITY, TOURISM AND EVENTS WITH SPECIALISMS - HOSPITALITY Level 5 Foundation Degree Higher Level Apprenticeship	Ulster University	HLA	3 years	Newry	64 UCAS points	C	C
INTERNATIONAL TRAVEL AND TOURISM Level 4 Higher National Certificate	Pearson	Part-time	3 years	Newry	48 UCAS points	C	C
MANAGEMENT & PROFESSIONAL DEVELOPMENT							
STRATEGIC PEOPLE MANAGEMENT Level 4 Advanced Diploma	CIPD	Part-time	1 year	eCampus	Level 6 Degree (Hons) in a HR related subject and employed in manager role or CIPD Level 5	N/A	N/A
STRATEGIC MANAGEMENT AND LEADERSHIP Level 2 Diploma	Pearson	Part-time	1 year	Newry	Employed in a managerial role plus related study at Level 5 or above	C	C
STRATEGIC MANAGEMENT AND LEADERSHIP Level 2 Certificate	Pearson	Part-time	16 weeks	eCampus	Employed in a managerial role plus related study at Level 5 or above	C	C
PEOPLE MANAGEMENT Level 1 Associate Diploma	CIPD	Part-time	1 year	Newry & Portadown	Level 3 CIPD qualification and be currently employed in a people management role	N/A	N/A
LEADERSHIP AND MANAGEMENT Level 5 Certificate	City & Guilds	Part-time (evening)	20 weeks	eCampus	Level 3 qualification and be currently employed in a leadership and management role	C	C
MOTOR VEHICLE							
ADVANCED AUTOMOTIVE STUDIES Level 4 Certificate	IMI	Part-time	2 years	Portadown	Level 3 in a related motor vehicle subject	N/A	N/A
MUSIC							
CREATIVE MUSIC AND AUDIO PRODUCTION BA (Hons) Level 6 Degree (Top-Up)	The Open University	Part-time	2 years	Arragh	Level 5 in Music & Audio Production or HND in a Music related discipline with an overall Merit	C	C
CREATIVE MUSIC AND AUDIO PRODUCTION Level 5 Foundation Degree	The Open University	Full-time	2 years	Arragh	48 UCAS points	C	C
SCIENCE							
APPLIED INDUSTRIAL SCIENCES - CHEMICAL Level 5 Foundation Degree Higher Level Apprenticeship	Ulster University	HLA	2 years	Newry	48 UCAS points & Chemistry at Level 3	C	C
APPLIED INDUSTRIAL SCIENCES - LIFE SCIENCE Level 5 Foundation Degree Higher Level Apprenticeship	Ulster University	HLA	2 years	Portadown	48 UCAS points & Chemistry at Level 3	C	C
SPORT & EXERCISE							
SPORT AND EXERCISE BSc (Hons) Level 6 Degree (Top-Up)	The Open University	Part-time	2 years	Newry	Level 5 in a sport related discipline with a pass mark of at least 55%	C	C
SPORT AND EXERCISE Level 5 Foundation Degree	The Open University	Full-time	2 years	Newry	48 UCAS points	C	C
SPORT AND EXERCISE Level 5 Foundation Degree Higher Level Apprenticeship	The Open University	Full-time	3 years	Newry	48 UCAS points	C	C
* apply via Stramlinville College, ** apply via UCAS							
Please note: Additional entry requirements apply for most courses listed above - please refer to our website for details							

Apply Now

0300 123 1223  www.src.ac.uk

